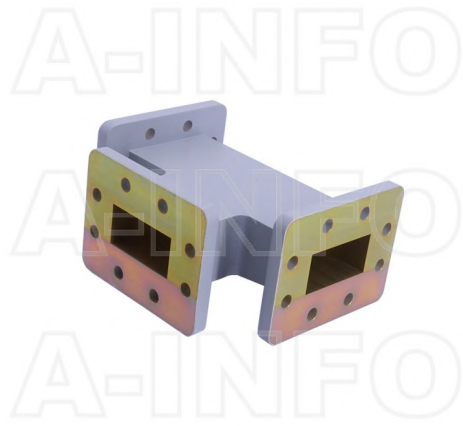


187WHT WR187 Waveguide H-Plane Tee 3.95-5.85GHz with Three Rectangular Waveguide Interfaces

WR187 Waveguide H-Plane Tee Operating From 3.95 to 5.85GHz with Three Rectangular Waveguide Interfaces



Product Information

SKU	187WHT
-----	--------

Description

Waveguide H-plane tee 187WHT, operating from 3.95 to 5.85GHz with a 0.15dB insertion loss and low VSWR 1.50:1. 187WHT is a three-ports waveguide connector. All the ports have standard WR187 waveguides with the same flanges FDP48(UDR48). The waveguide H-plane tees are used to separate the signal at H plane rectangular port into the collinear arm with the two rectangular waveguide ports or synthesize the signal from the two ports of the collinear arm into the H plane port.

Technical Specification

Electrical Specification		Interface	
WG Tee Type	H-Plane Tee	Flange 3 Style	Rectangular
Waveguide Band	S C	Flange 3 Type	Cover
Waveguide Type	Rectangular	Flange 3 Designation	FDP48(UDR48)
Waveguide Size EIA WR	WR187	Mechanical Specification	
Frequency, Min (GHz)	3.95	Body Material	Al
Frequency, Max (GHz)	5.85	Pressure Sealed	No
I.L., Typ (dB)	0.15	Environmental Specification	
I.L., Max (dB)	0.2	Operating Temp. Low (°C)	-55
VSWR, Typ	1.50:1	Operating Temp. High (°C)	85
Power Handling, CW, (W)	1800	Storage Temp. Low (°C)	-60
Power Handling, Peak, (KW)	1000	Storage Temp. High (°C)	90
Interface			
Flange 1 Style	Rectangular		
Flange 1 Type	Cover		
Flange 1 Designation	FDP48(UDR48)		
Flange 2 Style	Rectangular		
Flange 2 Type	Cover		
Flange 2 Designation	FDP48(UDR48)		

Additional Information

Application	General Purpose Indoor & Outdoor, Fixed
-------------	---

Similar Products



159WET WR159 Waveguide E-Plane Tee 4.9-7.05GHz with Three Rectangular Waveguide Interfaces



159WHT WR159 Waveguide H-Plane Tee 4.9-7.05GHz with Three Rectangular Waveguide Interfaces



159WMT WR159 Waveguide Magic Tee 4.9-7.05GHz with Four Rectangular Waveguide Interfaces



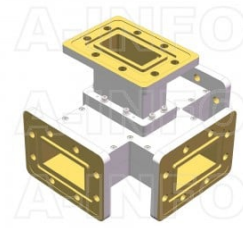
187WET WR187 Waveguide E-Plane Tee 3.95-5.85GHz with Three Rectangular Waveguide Interfaces



187WET/C10 WR187 Waveguide E-Plane Tee 4.4-5GHz with Three Rectangular Waveguide Interfaces



187WMT WR187 Waveguide Magic Tee 3.95-5.85GHz with Four Rectangular Waveguide Interfaces



187WMT_DMDMDMDM WR187 Waveguide Magic Tee 3.95-5.85GHz with Four Rectangular Waveguide Interfaces



229WET WR229 Waveguide E-Plane Tee 3.3-4.9GHz with Three Rectangular Waveguide Interfaces



229WHT WR229 Waveguide H-Plane Tee 3.3-4.9GHz with Three Rectangular Waveguide Interfaces



229WMT WR229 Waveguide Magic Tee 3.3-4.9GHz with Four Rectangular Waveguide Interfaces

About this Datasheet

<ul style="list-style-type: none"> ● Product Information Product Link: https://www.ainfoinc.com/187wht-wr187-waveguide-h-plane-tee-3-95-5-85-ghz-fdp48-udr48 Data subject to change without notice. © A-INFO INC. 2024. All Rights Reserved 	<ul style="list-style-type: none"> ● Contact Us Address: 60 Tesla, Irvine, CA 92618, USA Website: www.ainfoinc.com Email: sales@ainfoinc.com 	<ul style="list-style-type: none"> ● Phone & Fax Phone: +1-949-639-9688 +1-949-639-9608 Fax: +1-949-639-9670
---	--	--