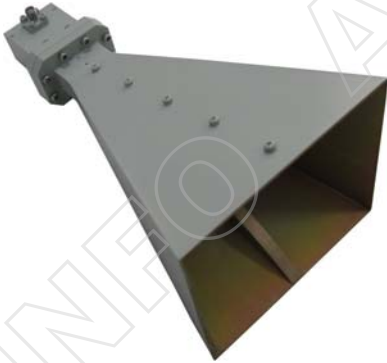
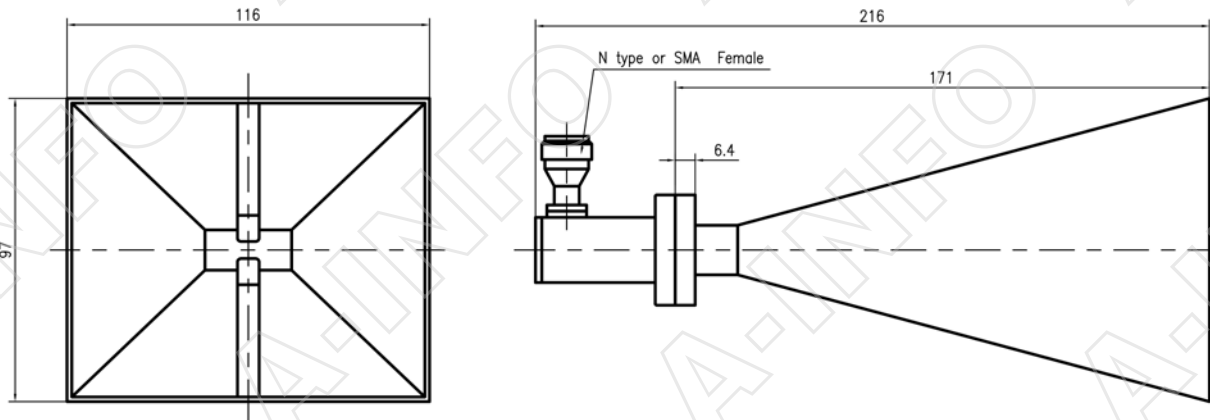


## Technical Specification



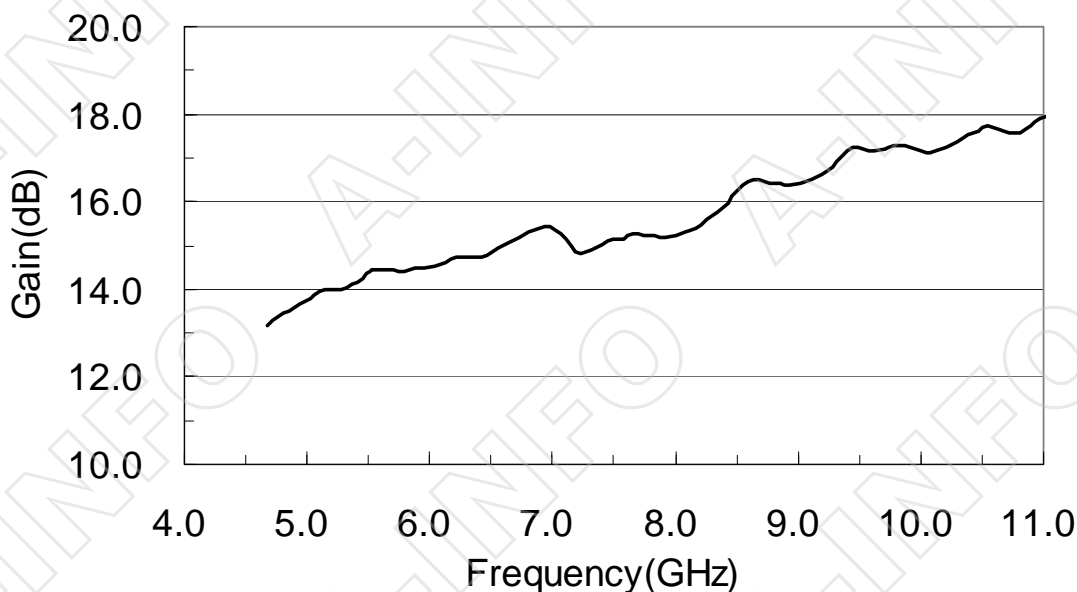
Frequency Range(GHz)	4.75 - 11.0
Gain(dB)	15.0 Typ.
Polarization	Linear
VSWR	2.0 Max
Cross Pol. Isolation(dB)	35 Typ.
Waveguide(A Type)	WRD475D24
Adapter(C Type)	475DRWCAS or 475DRWCAN
Connector(C Type)	SMA-F or N-F
Size(mm)	116x97x216 (Including Adapter)
Net Weight(Kg)	0.4 Around(Including Adapter)

## Outline Drawing (Size: mm)

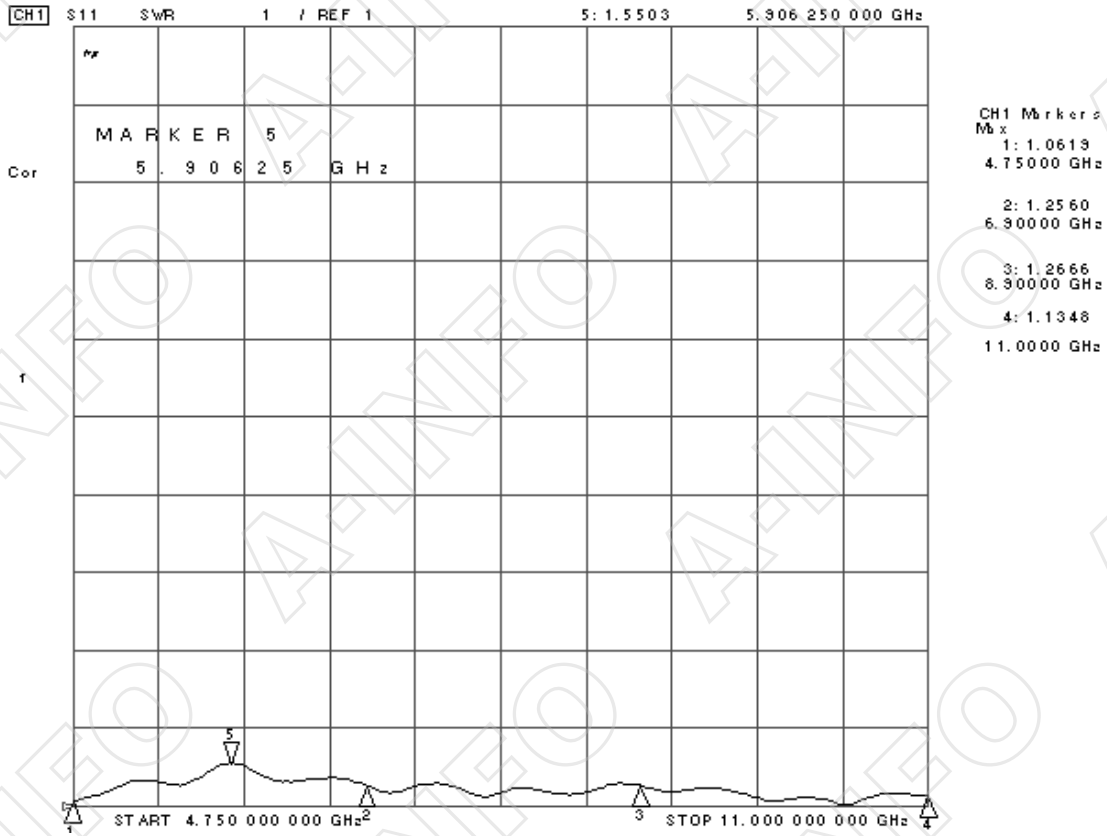


## Test Results

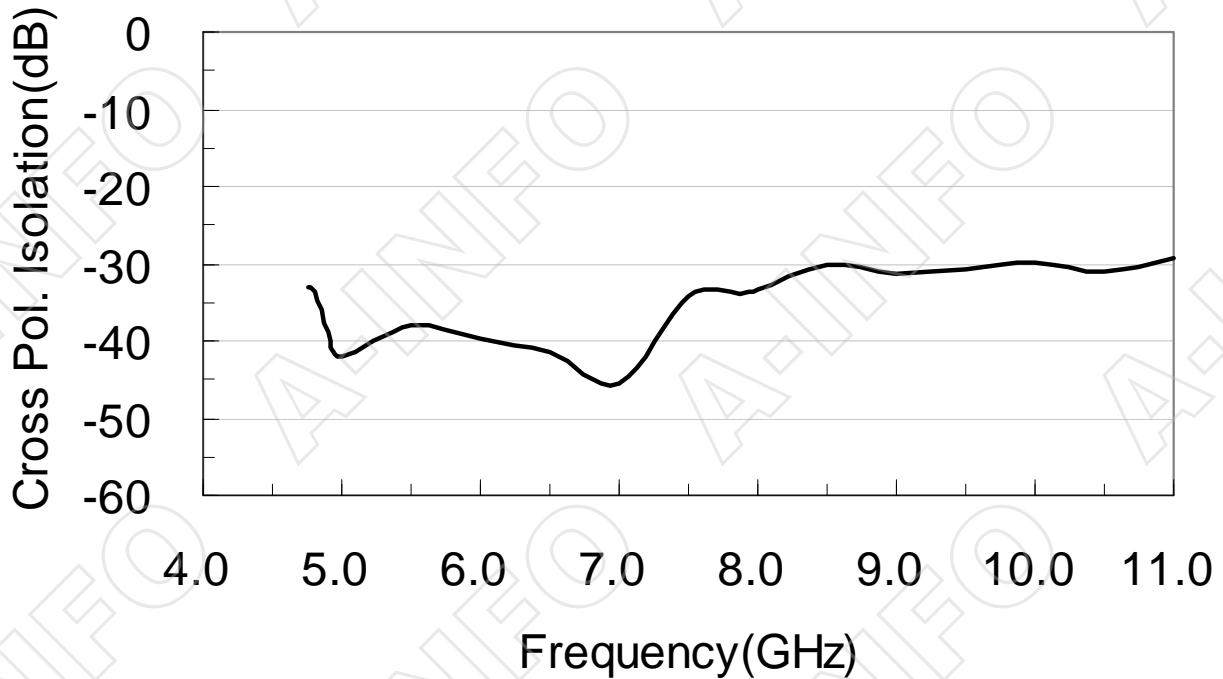
### 1. Gain



## 2. VSWR

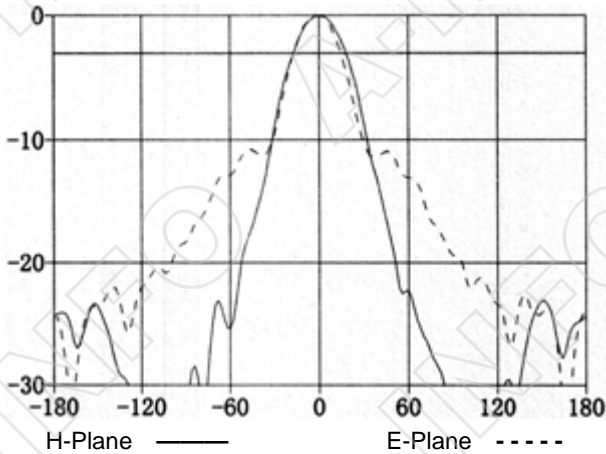


## 3. Cross Pol. Isolation



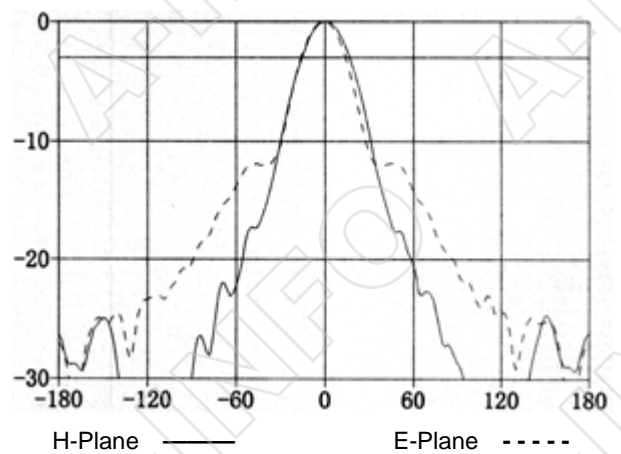
## 4. Pattern

4.75GHz



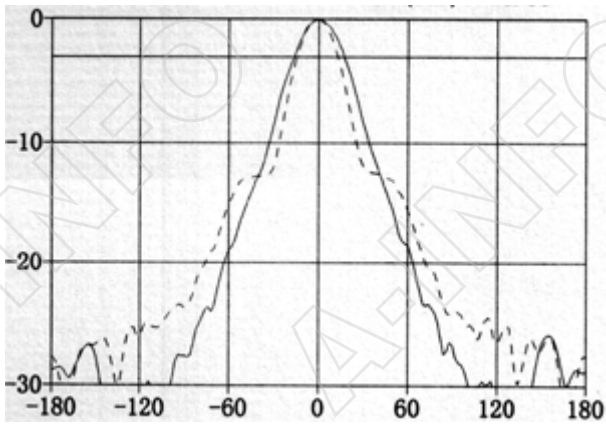
3dB Beamwidth (deg): 35.26    3dB Beamwidth (deg): 31.83

5.0GHz



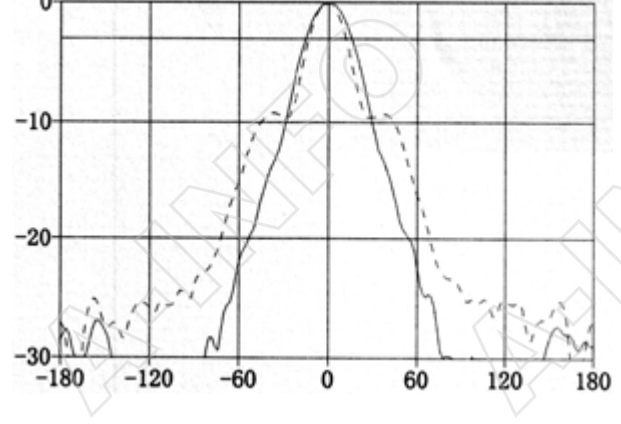
3dB Beamwidth (deg): 31.96    3dB Beamwidth (deg): 30.22

5.5GHz



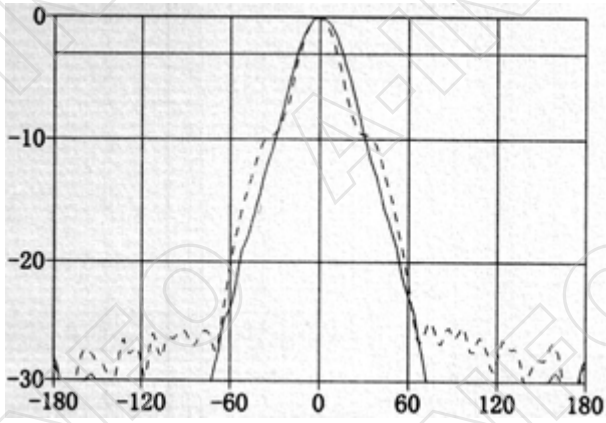
H-Plane ——— E-Plane - - - - -  
3dB Beamwidth (deg): 33.30    3dB Beamwidth (deg): 27.36

6.0GHz



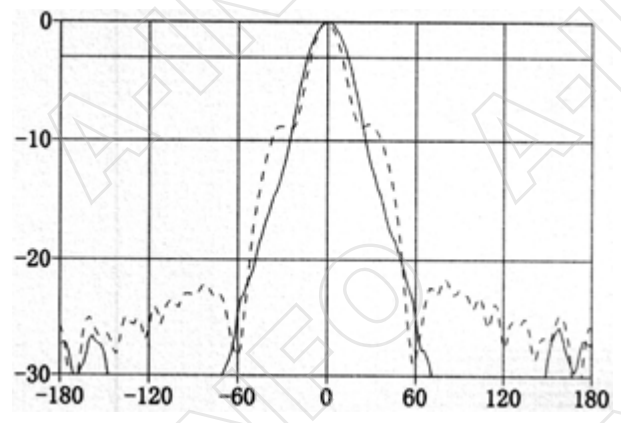
H-Plane ——— E-Plane - - - - -  
3dB Beamwidth (deg): 30.73    3dB Beamwidth (deg): 24.56

6.5GHz



H-Plane ——— E-Plane - - - - -  
3dB Beamwidth (deg): 30.39    3dB Beamwidth (deg): 24.93

7.0GHz



H-Plane ——— E-Plane - - - - -  
3dB Beamwidth (deg): 27.24    3dB Beamwidth (deg): 21.28

