

510WHT WR510 Waveguide H-Plane Tee 1.45-2.2GHz with Three Rectangular Waveguide Interfaces

WR510 Waveguide H-Plane Tee Operating From 1.45 to 2.2GHz with Three Rectangular Waveguide Interfaces



### Product Information

SKU	510WHT
-----	--------

### Description

Waveguide H-plane tee 510WHT, operating from 1.45 to 2.2GHz with a 0.1dB insertion loss and low VSWR 1.50:1. 510WHT is a three-ports waveguide connector. All the ports have standard WR510 waveguides with the same flanges FDP18(UDR18). The waveguide H-plane tees are used to separate the signal at H plane rectangular port into the collinear arm with the two rectangular waveguide ports or synthesize the signal from the two ports of the collinear arm into the H plane port.

### Technical Specification

Electrical Specification		Interface	
WG Tee Type	H-Plane Tee	Flange 3 Style	Rectangular
Waveguide Band	L S	Flange 3 Type	Cover
Waveguide Type	Rectangular	Flange 3 Designation	FDP18(UDR18)
Waveguide Size EIA WR	WR510	Mechanical Specification	
Frequency, Min (GHz)	1.45	Body Material	Al
Frequency, Max (GHz)	2.2	Pressure Sealed	No
I.L., Typ (dB)	0.1	Environmental Specification	
I.L., Max (dB)	0.2	Operating Temp. Low (°C)	-55
VSWR, Typ	1.50:1	Operating Temp. High (°C)	85
Power Handling, CW, (W)	18000	Storage Temp. Low (°C)	-60
Power Handling, Peak, (KW)	8700	Storage Temp. High (°C)	90
Interface			
Flange 1 Style	Rectangular		
Flange 1 Type	Cover		
Flange 1 Designation	FDP18(UDR18)		
Flange 2 Style	Rectangular		
Flange 2 Type	Cover		
Flange 2 Designation	FDP18(UDR18)		

### Additional Information

Application	General Purpose Indoor & Outdoor, Fixed
-------------	---

### Similar Products



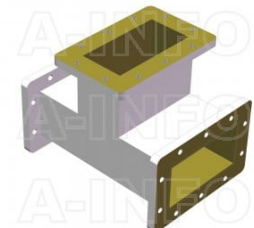
430WET WR430 Waveguide E-Plane Tee 1.7-2.6GHz with Three Rectangular Waveguide Interfaces



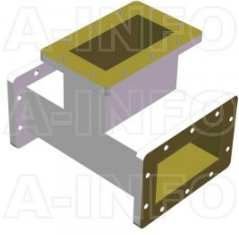
430WHT WR430 Waveguide H-Plane Tee 1.7-2.6GHz with Three Rectangular Waveguide Interfaces



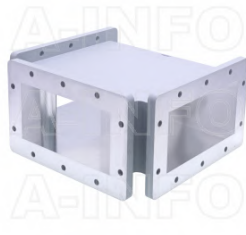
430WMT WR430 Waveguide Magic Tee 1.7-2.6GHz with Four Rectangular Waveguide Interfaces



510WET WR510 Waveguide E-Plane Tee 1.45-2.2GHz with Three Rectangular Waveguide Interfaces



650WET WR650 Waveguide E-Plane Tee 1.12-1.7GHz with Three Rectangular Waveguide Interfaces



650WHT WR650 Waveguide H-Plane Tee 1.12-1.7GHz with Three Rectangular Waveguide Interfaces

## About this Datasheet

<ul style="list-style-type: none"> <li>• <b>Product Information</b> Product Link: <a href="https://www.ainfoinc.com/510wht-wr510-waveguide-h-plane-tee-1-45-2-2-ghz-fdp18-udr18">https://www.ainfoinc.com/510wht-wr510-waveguide-h-plane-tee-1-45-2-2-ghz-fdp18-udr18</a> Data subject to change without notice. © A-INFO INC. 2024. All Rights Reserved</li> </ul>	<ul style="list-style-type: none"> <li>• <b>Contact Us</b> Address: 60 Tesla, Irvine, CA 92618, USA Website: <a href="http://www.ainfoinc.com">www.ainfoinc.com</a> Email: <a href="mailto:sales@ainfoinc.com">sales@ainfoinc.com</a></li> </ul>	<ul style="list-style-type: none"> <li>• <b>Phone &amp; Fax</b> Phone: +1-949-639-9688 +1-949-639-9608 Fax: +1-949-639-9670</li> </ul>
---	--	--