

## MC8nT: n=7-8 (e.g., n=8 for 1P8T)

**NORMALLY OPEN  
or LATCHING**

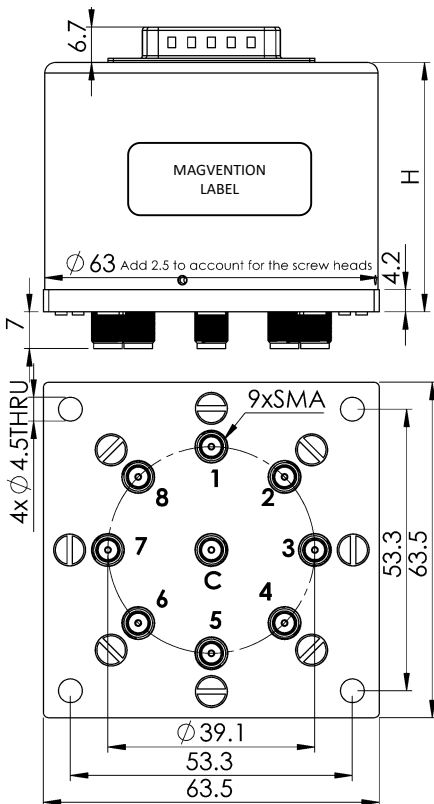
The MC8nT-S18 product features SMA connectors and an operation frequency range of DC to 18 GHz. This product can be of failsafe or latching type with internal self-terminations. The options include TTL, SELF CUTOFF, indicators, and suppression diodes etc. The product is typically provided with a 15-pin male D-sub connector as the control interface.



Specifications	
Contact Material	Plated Au
Switching Sequence	Break before Make
Switching Time (max)	15msec
Impedance	50Ω
Temperature Range	-25°C to +65°C -55°C to +85°C ("e" option)
Relative Humidity	5 to 85%
Operation Life (cycles)	1000000
Vibration Operating	10G RMS, 20-2000Hz
Mechanical Shock (non-operating)	50G, 1/2 Sine, 11msec
Weight (approx.)	285g

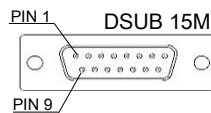
Frequency Range (GHz)	VSWR (max)	Insertion Loss (dB) (max)	Isolation (dB) (min)
DC-6	1.3	0.3	80
6-12	1.4	0.4	70
12-18	1.5	0.5	60

Voltage (VDC)		12	18	24	28
Current (mA)	Normally Open	330	220	167	140
	Latching (set)	290	225	150	120



For LATCHING,  
I(reset) = n x I(set).

Other options are available upon request.



MC88-, 1P8T SWITCH  
MC87-, 1P7T SWITCH

1PnT PORT CONFIGURATIONS	
1PnT	Ports Used
1P8T	1 2 3 4 5 6 7 8
1P7T	1 2 3 4 5 6 7

Note: "Blank" represents the unused RF and corresponding control ports.

H = 50 (max) (STANDARD)  
= 60 (max) (with TTL)  
= 65 (max) (with INDICATORS)

Mechanical drawings (unit: mm, tolerance +/-0.5mm).

NORMALLY OPEN 15-PIN D-SUB PINOUT	
Pin No.	PINOUT
n=1-8	Vn ( Jn-COM )
9	COM(-)
10-15	UNUSED

NORMALLY OPEN with TTL 15-PIN D-SUB PINOUT	
Pin No.	PINOUT
n=1-8	An ( Jn-COM )
9	COM(-)
10-14	UNUSED
15	+VDC

LATCHING (PULSE) 15-PIN D-SUB PINOUT	
Pin No.	PINOUT
n=1-8	+ΔVn ( Jn-COM )
9	COM(-)
10	+ΔVR (Reset ALL OPEN)
11-15	UNUSED

LATCHING TTL 15-PIN D-SUB PINOUT	
Pin No.	PINOUT
n=1-8	An ( Jn-COM )
9	COM(-)
10	AR (Reset ALL OPEN)
11-14	UNUSED
15	+VDC

LATCHING SELF CUTOFF 15-PIN D-SUB PINOUT	
Pin No.	PINOUT
n=1-8	Vn ( Jn-COM )
9	COM(-)
10-15	UNUSED

LATCHING TTL&SELF CUTOFF 15-PIN D-SUB PINOUT	
Pin No.	PINOUT
n=1-8	An ( Jn-COM )
9	COM(-)
10-14	UNUSED
15	+VDC

Pin 1-8: The corresponding control signal inputs.

Note: For the SELF CUTOFF, a "RESET ALL" option is available upon request.

For options with INDICAOTRS, a 26PIN DSUB connector will be provided. Contact factory for the corresponding pin outs.