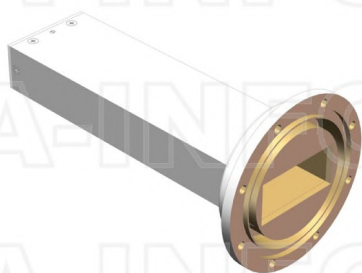


187WLPL_AE WR187 Waveguide Low Power Load 3.95-5.85GHz with Rectangular Waveguide Interface

WR187 Waveguide Low Power Load Operating From 3.95 to 5.85GHz with Rectangular Waveguide Interface



Product Information

SKU	187WLPL_AE
-----	------------

Description

Waveguide low power load 187WLPL_AE, operating from 3.95 to 5.85GHz and low VSWR 1.04:1. 187WLPL_AE covers the WR187 sub waveguide band and comes with one flange FAE48(CAR48). It can handle 8W continuously and 8KW peak power. The WLPL series are for general version, low VSWR terminations for system application. The typical applications include system or test bench set-ups and small moderate power dummy loads.

Technical Specification

Electrical Specification		Mechanical Specification	
WG Load Type	Low Power	Body Material	Al
Waveguide Band	S C	Size, L (mm)	163
Waveguide Type	Rectangular	Size, W (mm)	92.2
Waveguide Size EIA WR	WR187	Size, H (mm)	92.2
Frequency, Min (GHz)	3.95	Weight, (kg)	0.3
Frequency, Max (GHz)	5.85	Pressure Sealed	No
VSWR, Typ	1.03:1	Environmental Specification	
VSWR, Max	1.04:1	Operating Temp. Low (°C)	-55
Power Handling, CW, (W)	8	Operating Temp. High (°C)	85
Power Handling, Peak, (KW)	8	Storage Temp. Low (°C)	-60
		Storage Temp. High (°C)	90
Interface			
Flange Style	Round		
Flange Type	Choked		
Flange Designation	FAE48(CAR48)		

Additional Information

Application	General Purpose Indoor & Outdoor, Fixed
-------------	---

About this Datasheet

<ul style="list-style-type: none"> ● Product Information Product Link: https://www.ainfoinc.com/187wpl-ae-wr187-waveguide-low-power-load-3-95-5-85-ghz-fae48-car48 Data subject to change without notice. © A-INFO INC. 2024. All Rights Reserved 	<ul style="list-style-type: none"> ● Contact Us Address: 60 Tesla, Irvine, CA 92618, USA Website: www.ainfoinc.com Email: sales@ainfoinc.com 	<ul style="list-style-type: none"> ● Phone & Fax Phone: +1-949-639-9688 +1-949-639-9608 Fax: +1-949-639-9670
---	--	--