

340WMT WR340 Waveguide Magic Tee 2.2-3.3GHz with Four Rectangular Waveguide Interfaces

WR340 Waveguide Magic Tee Operating From 2.2 to 3.3GHz with Four Rectangular Waveguide Interfaces

Product Information

SKU	340WMT
-----	--------

Description

Waveguide magic tee 340WMT, operating from 2.2 to 3.3GHz with a 0.6dB insertion loss, 40dB isolation, H-Plane VSWR 1.30:1 and E-Plane VSWR 1.50:1. 340WMT is a four-ports hybrid coupler or power divider. All the ports have standard WR340 waveguides with the same flanges FDP26(UDR26). The magic tee can be used as a power combiner or a power divider based on the given application's needs.

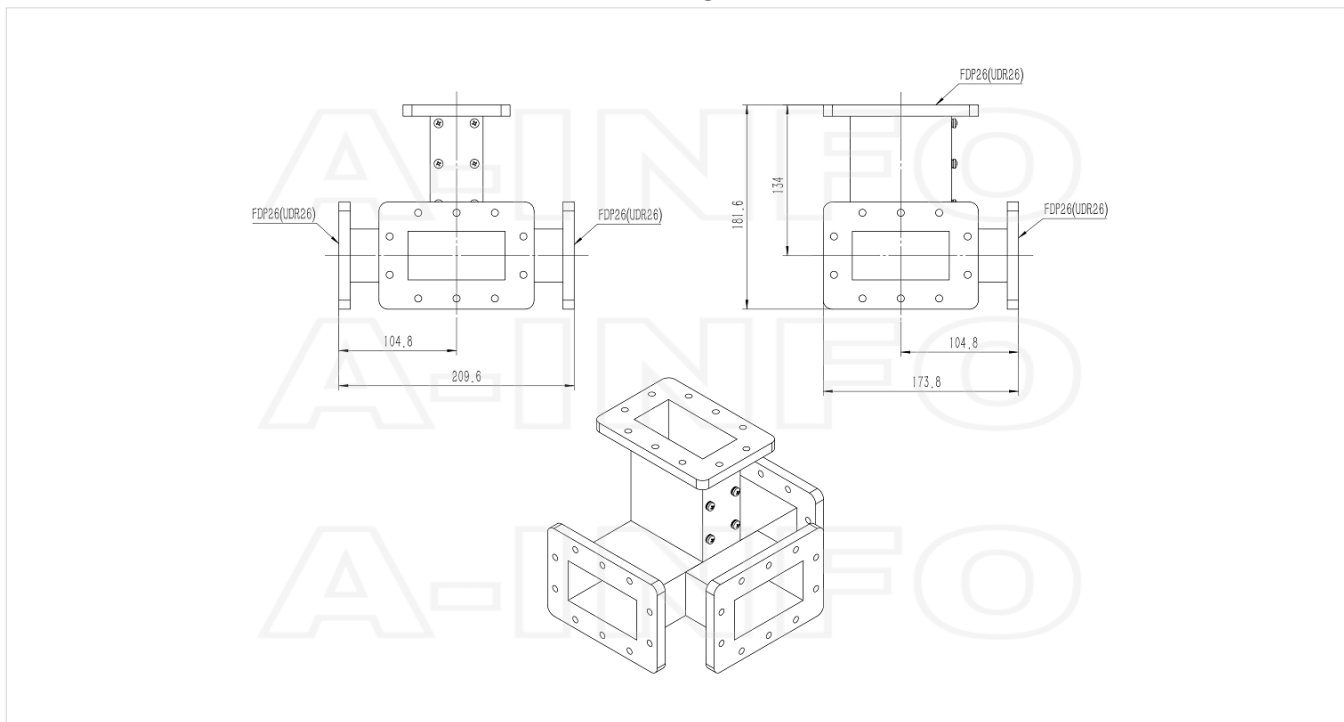
Technical Specification

Electrical Specification		Interface	
WG Tee Type	Magic Tee	Flange 3 Style	Rectangular
Waveguide Band	S	Flange 3 Type	Cover
Waveguide Type	Rectangular	Flange 3 Designation	FDP26(UDR26)
Waveguide Size EIA WR	WR340	Flange 4 Style	Rectangular
Frequency, Min (GHz)	2.2	Flange 4 Type	Cover
Frequency, Max (GHz)	3.3	Flange 4 Designation	FDP26(UDR26)
I.L., Typ (dB)	0.4	Mechanical Specification	
I.L., Max (dB)	0.6	Body Material	Al
VSWR, H-Plane, Typ	1.3	Size, L (mm)	209.6
VSWR, H-Plane, Typ	1.30:1	Size, W (mm)	173.8
VSWR, E-Plane, Typ	1.5	Size, H (mm)	180.7
VSWR, E-Plane, Typ	1.50:1	Weight, (kg)	1.58
Isolation, Min (dB)	30	Pressure Sealed	No
Isolation, Typ (dB)	40	Environmental Specification	
Power Handling, CW, (W)	8000	Operating Temp. Low (°C)	-55
Power Handling, Peak, (KW)	4000	Operating Temp. High (°C)	85
Interface		Storage Temp. Low (°C)	-60
Flange 1 Style	Rectangular	Storage Temp. High (°C)	90
Flange 1 Type	Cover		
Flange 1 Designation	FDP26(UDR26)		
Flange 2 Style	Rectangular		
Flange 2 Type	Cover		
Flange 2 Designation	FDP26(UDR26)		

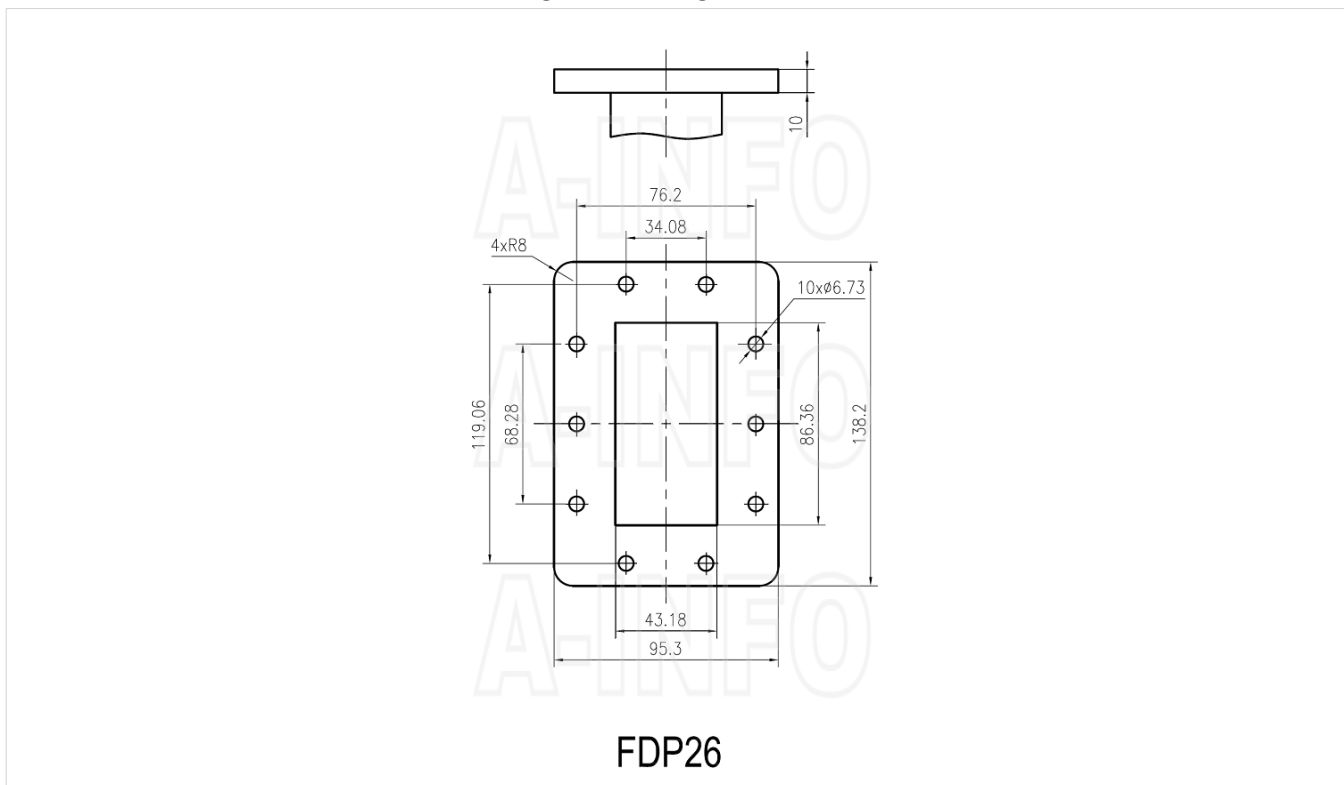
Additional Information

Application	General Purpose Indoor & Outdoor, Fixed
-------------	---

Outline Drawing(Size: mm)



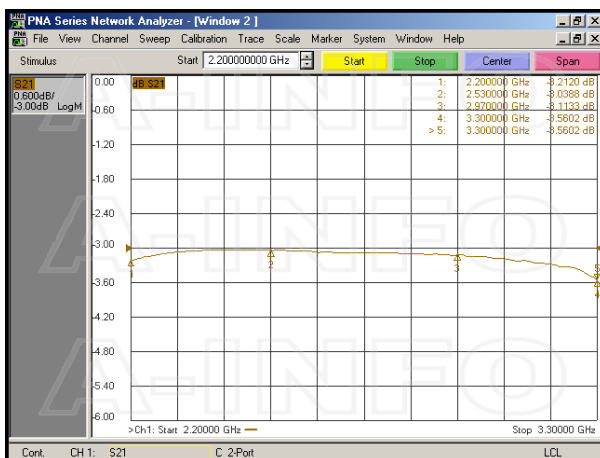
Flange Drawing(Size: mm)



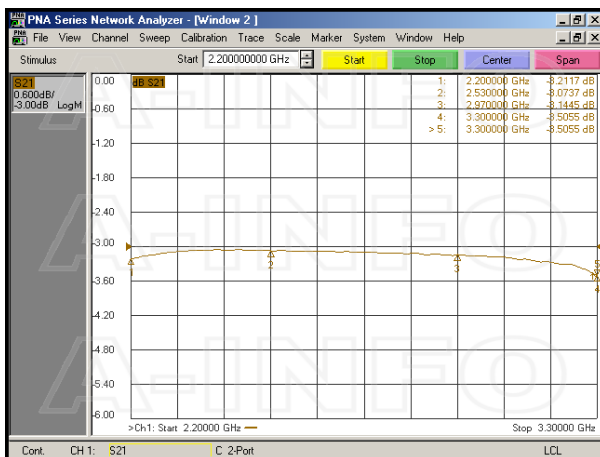
Typical Test Results

Insertion Loss(Including the theoretical loss 3.0dB)

E-Plane

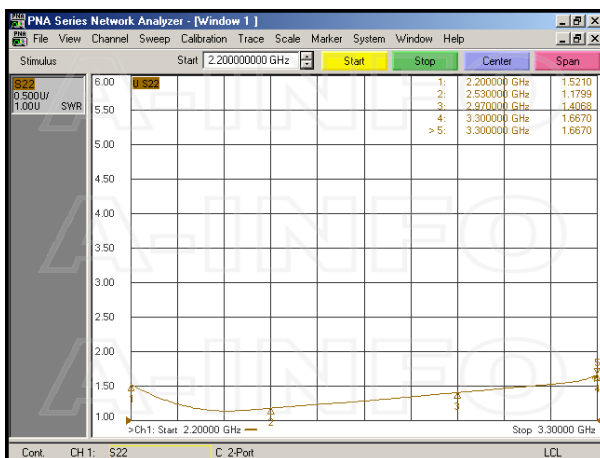


H-Plane

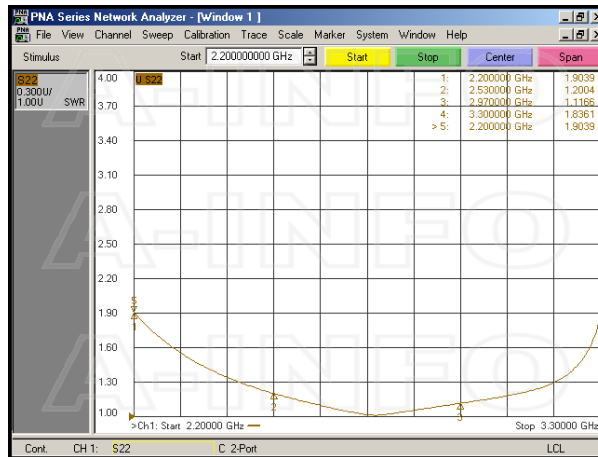


VSWR

E-Plane

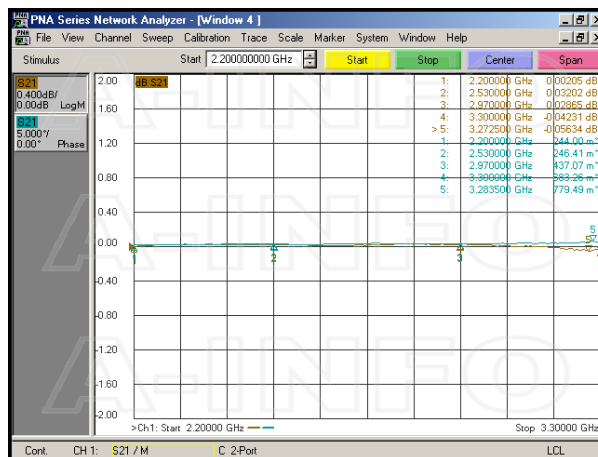


H-Plane

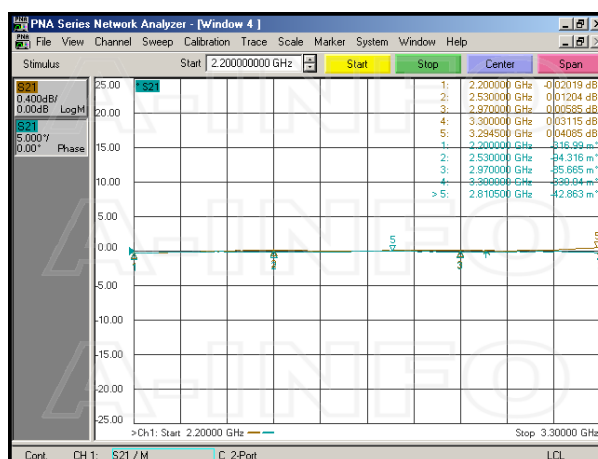


Unbalance

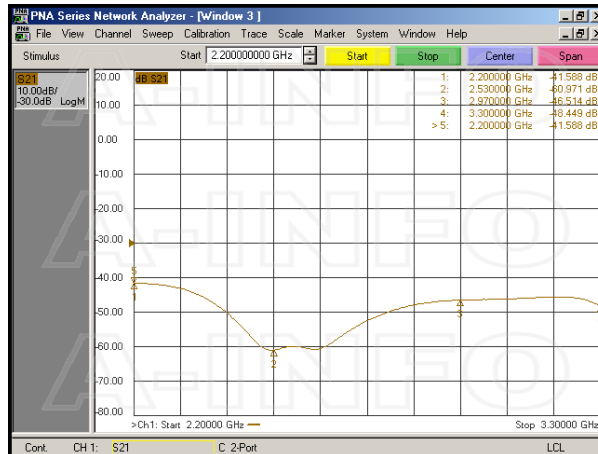
E-Plane



H-Plane



Isolation



Related Products



340WCAN Right Angle Rectangular Waveguide to Coaxial Adapter 2.2-3.3GHz WR340 to N Type Female



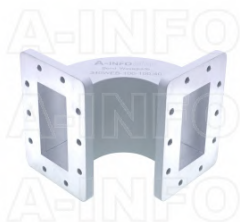
340WCAS Right Angle Rectangular Waveguide to Coaxial Adapter 2.2-3.3GHz WR340 to SMA Female



340WCA7/16 Right Angle Rectangular Waveguide to Coaxial Adapter 2.2-3.3GHz WR340 to 7/16 DIN Female



340WAL-100 WR340 Rectangular Straight Waveguide 2.2-3.3GHz with Two Rectangular Waveguide Interfaces



340WEB-100-100-40 WR340 Radius Bend Waveguide E-Plane 2.2-3.3GHz with Two Rectangular Waveguide Interfaces



340WHB-180-180-100 WR340 Radius Bend Waveguide H-Plane 2.2-3.3GHz with Two Rectangular Waveguide Interfaces



340WTA-500 WR340 Rectangular Twist Waveguide 2.2-3.3GHz with Two Rectangular Waveguide Interfaces



340WLPL WR340 Waveguide Low Power Load 2.2-3.3GHz with Rectangular Waveguide Interface



340WMPL1200 WR340
Waveguide Medium Power Load
2.2-3.3GHz with Rectangular
Waveguide Interface



340WHPL5500 WR340
Waveguide High Power Load
2.2-3.3GHz with Rectangular
Waveguide Interface

Similar Products



340W+C-30 WR340 Waveguide
Cross Coupler W+C-XX Type
2.2-3.3GHz 30dB Coupling with
Four Rectangular Waveguide
Interfaces



340W+C-40 WR340 Waveguide
Cross Coupler W+C-XX Type
2.2-3.3GHz 40dB Coupling with
Four Rectangular Waveguide
Interfaces



340W+C-50 WR340 Waveguide
Cross Coupler W+C-XX Type
2.2-3.3GHz 50dB Coupling with
Four Rectangular Waveguide
Interfaces



340W+C-60 WR340 Waveguide
Cross Coupler W+C-XX Type
2.2-3.3GHz 60dB Coupling with
Four Rectangular Waveguide
Interfaces



340WL+C-30 WR340 Waveguide
Cross Coupler WL+C-XX Type
2.2-3.3GHz 30dB Coupling with
Three Rectangular Waveguide
Interfaces



340WL+C-40 WR340 Waveguide
Cross Coupler WL+C-XX Type
2.2-3.3GHz 40dB Coupling with
Three Rectangular Waveguide
Interfaces



340WL+C-50 WR340 Waveguide
Cross Coupler WL+C-XX Type
2.2-3.3GHz 50dB Coupling with
Three Rectangular Waveguide
Interfaces



340WL+C-60 WR340 Waveguide
Cross Coupler WL+C-XX Type
2.2-3.3GHz 60dB Coupling with
Three Rectangular Waveguide
Interfaces



340WET WR340 Waveguide E-Plane Tee 2.2-3.3GHz with Three Rectangular Waveguide Interfaces



340WHT WR340 Waveguide H-Plane Tee 2.2-3.3GHz with Three Rectangular Waveguide Interfaces

About this Datasheet

<ul style="list-style-type: none"> • Product Information Product Link: https://www.ainfoinc.com/340wmt-wr340-waveguide-magic-tee-2-2-3-3-ghz-fdp26-udr26 Data subject to change without notice. © A-INFO INC. 2024. All Rights Reserved 	<ul style="list-style-type: none"> • Contact Us Address: 60 Tesla, Irvine, CA 92618, USA Website: www.ainfoinc.com Email: sales@ainfoinc.com 	<ul style="list-style-type: none"> • Phone & Fax Phone: +1-949-639-9688 +1-949-639-9608 Fax: +1-949-639-9670
---	--	--