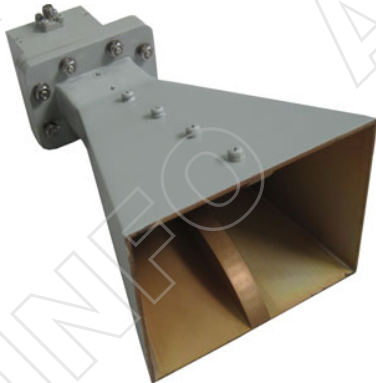
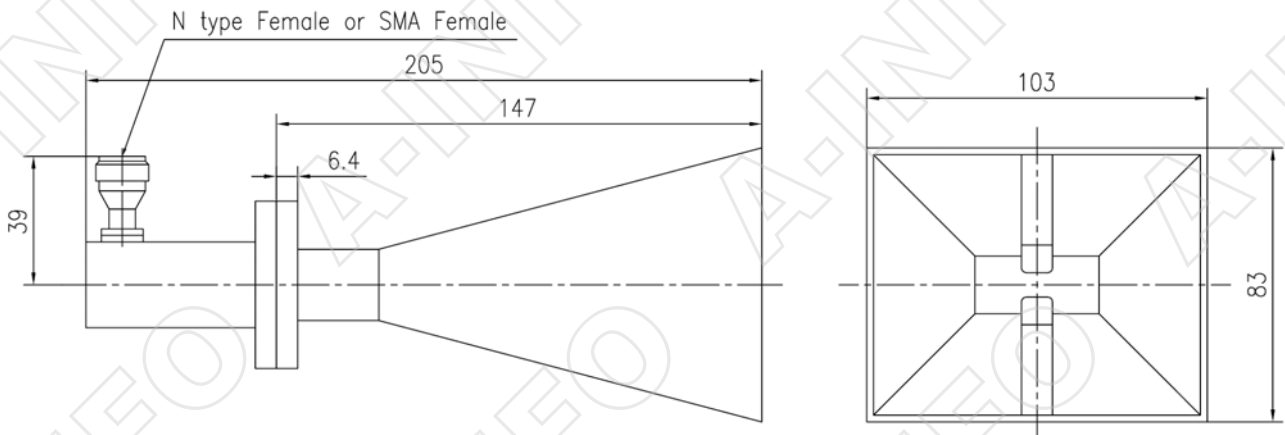


Technical Specification



Frequency Range(GHz)	3.5 - 8.2	
Gain(dB)	10 Typ.	
Polarization	Linear	
VSWR	2.0 Max	
Cross Polarization Isolation(dB)	-20 Max	
Waveguide(A Type)	WRD350D24	
Adapter(C Type)	350DRWCAN / 350DRWCAS	
Connector(C Type)	N-F / SMA-F	
Power Handling(W) CW	N-F	150
	SMA-F	50
Size(mm)	103x83x205 (Including Adapter)	
Net Weight(Kg)	0.5 Around (Including Adapter)	

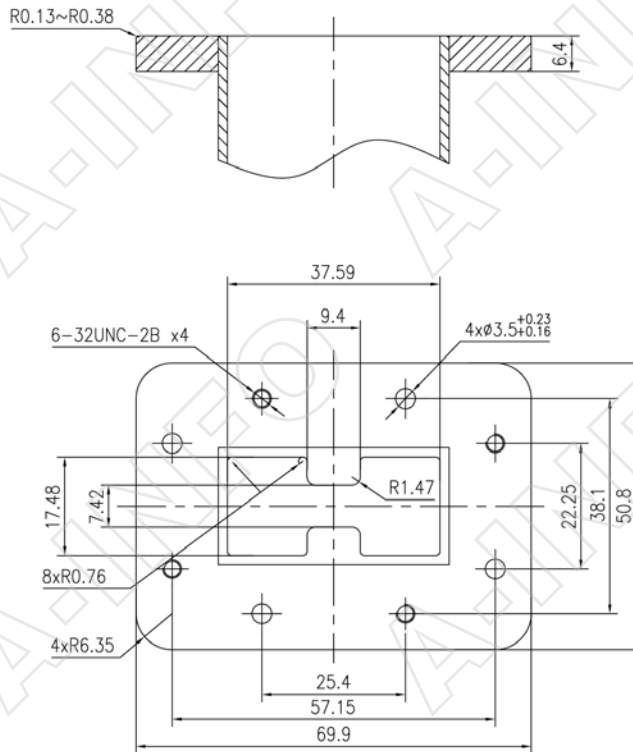
Outline Drawing (Size: mm)



Flange Drawing (Size: mm)

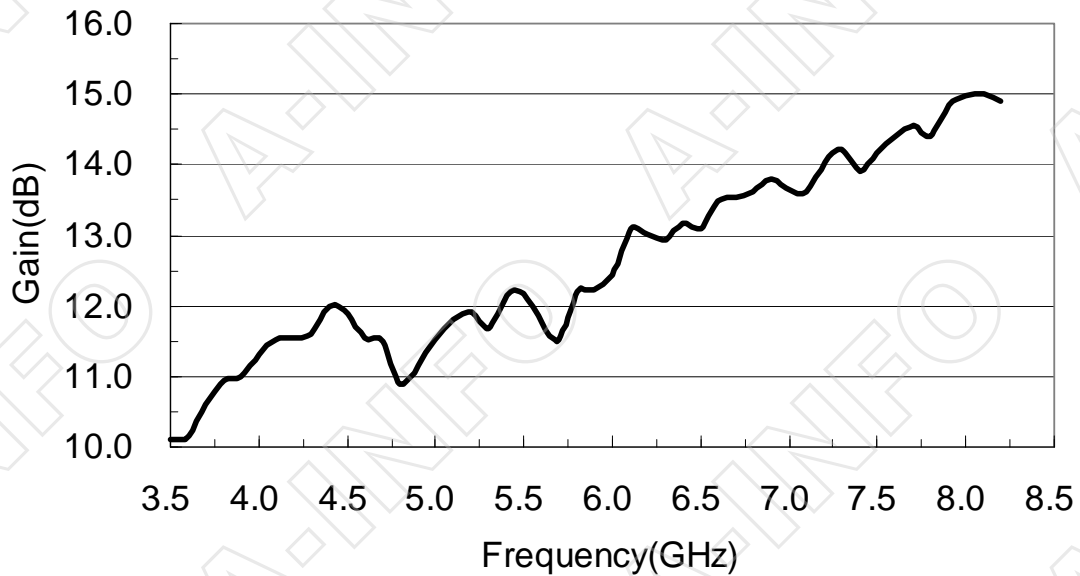
FPWRD350D24

(With four through mounting holes
and four screws holes)

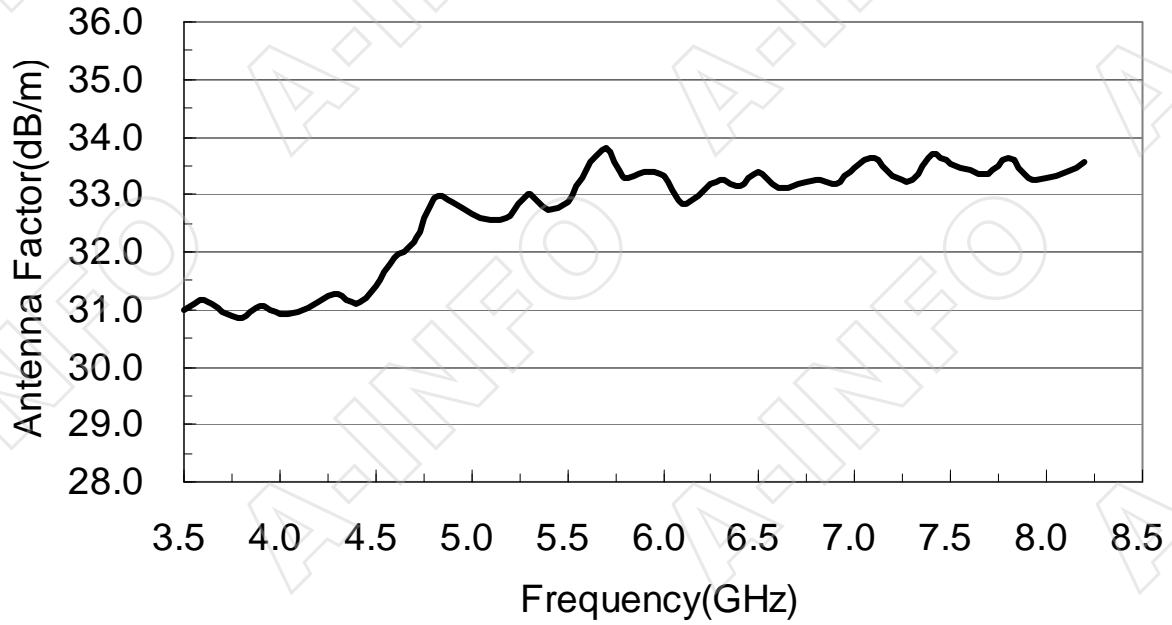


Test Results

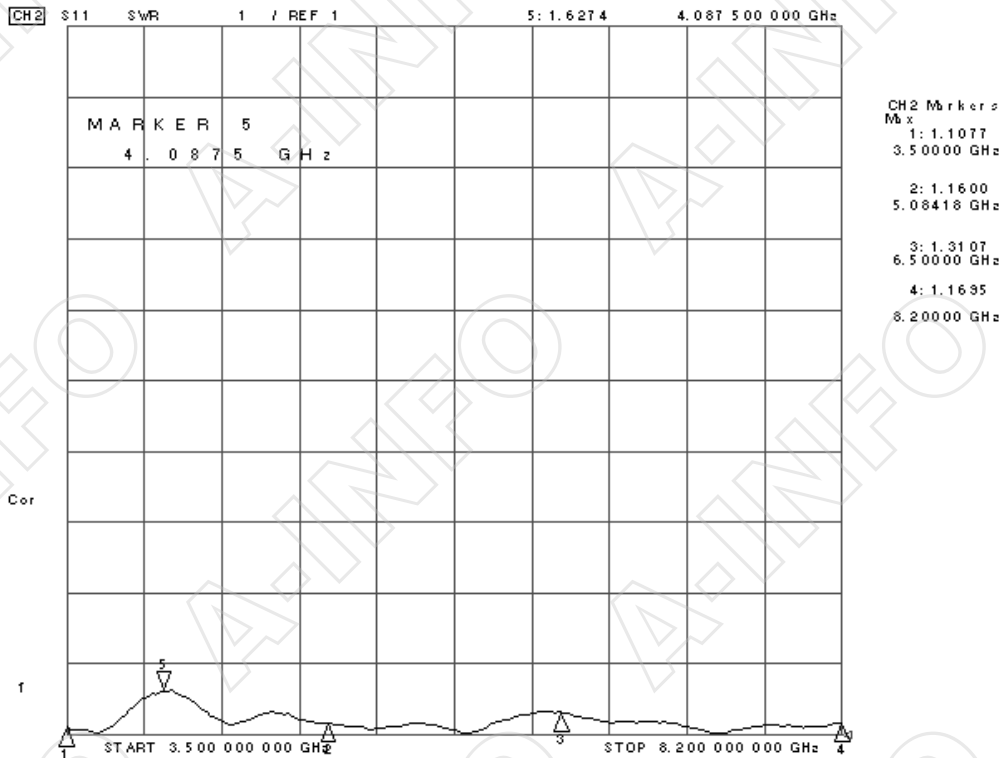
1. Gain



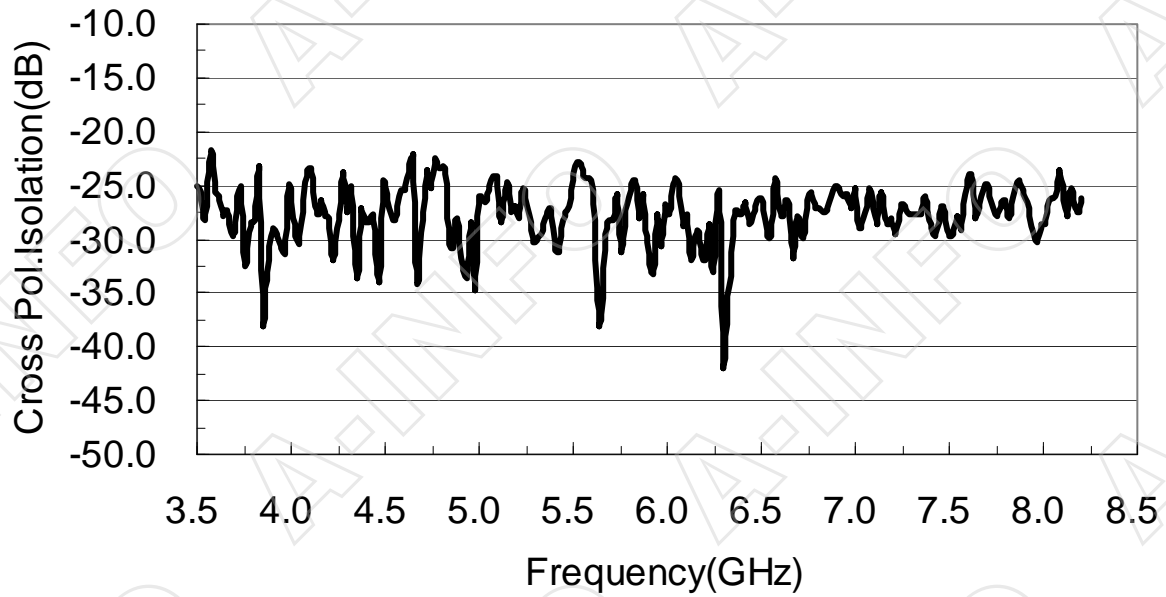
2. Antenna Factor



3. VSWR



4. Cross Polarization Isolation



5. Pattern

