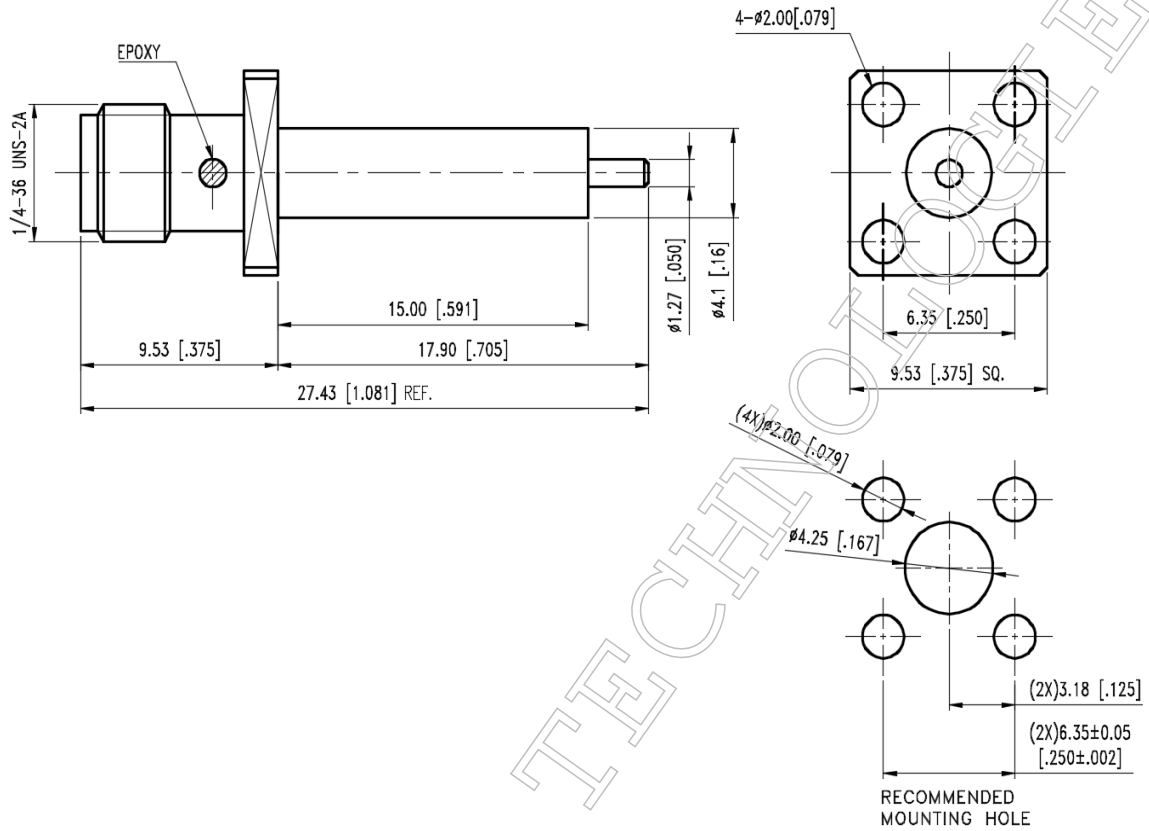


▪ **Outline Dimension Drawing**

Dimensions: mm[inch]



▪ **Material Specification**

| Description | Material | Plating |
|-------------|-----------------|---------|
| Body | Stainless steel | Gold |
| Contact | BeCu | Gold |
| Dielectric | PTFE | |

In the effort to improve our products, we reserve the right to make changes judged to be necessary



▪ **Electrical Specification**

| Description | | | Description | | |
|---------------------------------|------|-----------|--------------------------|------|-----------|
| Impedance | 50 | Ω | Insulation Resistance | 5000 | MΩ Min. |
| Frequency | 18 | GHz | Inner Contact Resistance | 6 | mΩ Max. |
| VSWR | 1.25 | Max. | Outer Contact Resistance | 2 | mΩ Max. |
| Insertion Loss | 0.25 | dB Max. | Voltage Rating | 550 | Vrms Max. |
| Dielectric Withstanding Voltage | 1000 | Vrms Max. | | | |

▪ **Mechanical Specification**

| Description | | | Description | | |
|--------------------------|-----|--------|------------------------|-----|---------|
| Center Contact | | | Recommended Torque | 7~9 | in. lbs |
| Axial Force-Mating End | 6 | lbs. | Coupling Nut Retention | N/A | in. lbs |
| Axial Force-Opposite End | 6 | lbs. | | | |
| Connector Durability | 500 | cycles | | | |
| Weight | N/A | g | | | |

▪ **Environmental Specification**

| Description | | |
|------------------|-----|----|
| Temperature Min. | -65 | °C |
| Temperature Max. | 125 | °C |
| Hermetic Seal | N/A | |

In the effort to improve our products, we reserve the right to make changes judged to be necessary