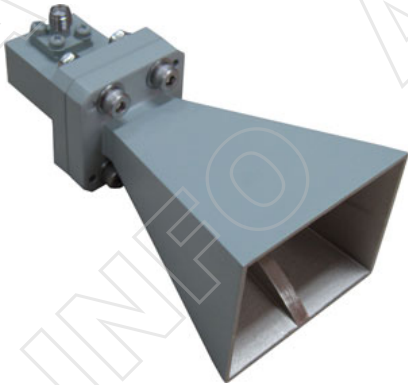
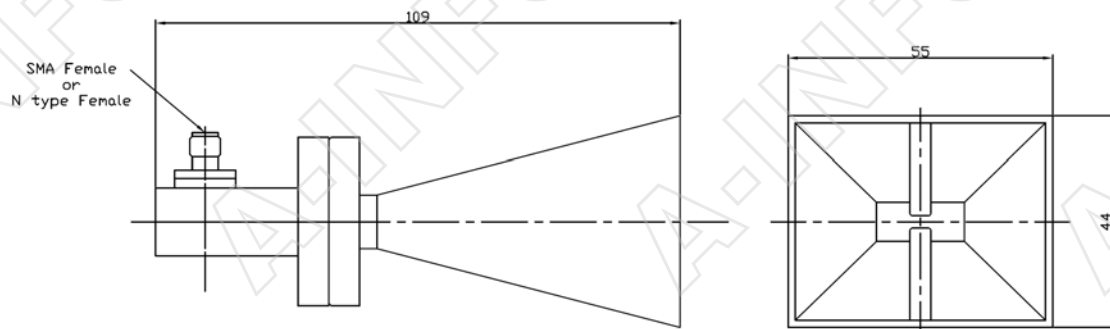


## Technical Specification



Frequency Range (GHz)	6.5 - 18.0
Gain(dB)	10 Typ.
Polarization	Linear
VSWR	2.0 Max
Cross Polarization Isolation(dB)	-25 Max
Waveguide(A Type)	WRD650D28
Adapter(C Type)	650DRWCAS or 650DRWCAN
Connector(C Type)	SMA-F or N-F
Size	55x44x109 (Including Adapter)
Net Weight(Kg)	0.19 Around (Including Adapter)

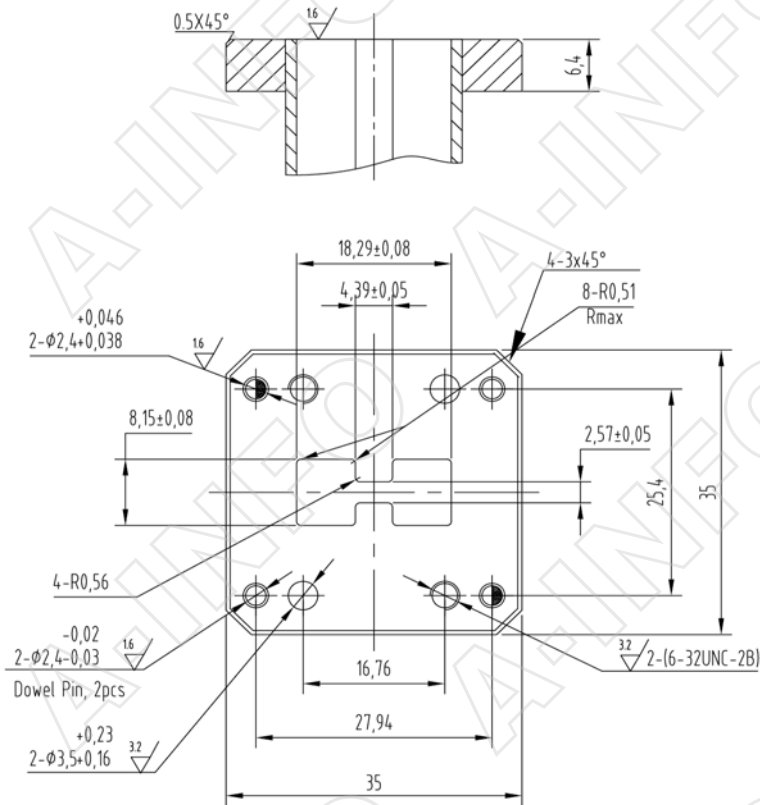
## Outline Drawing (Size: mm) Including Adapter



## Flange Drawing (Size: mm)

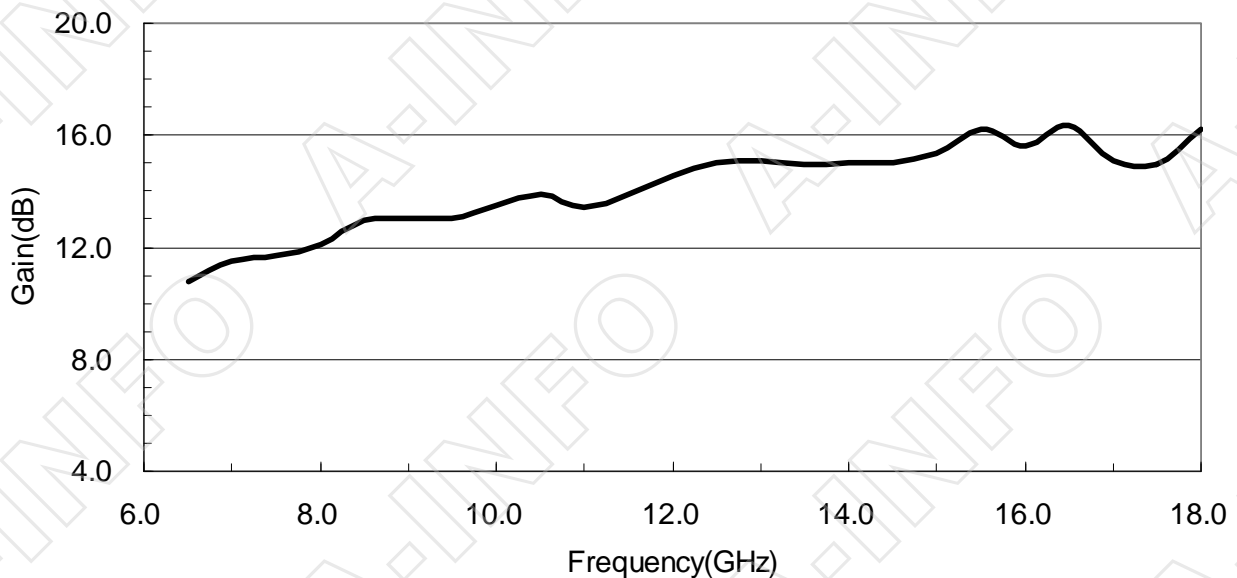
### FPWRD650D28

(With two through mounting holes  
and two screws holes)

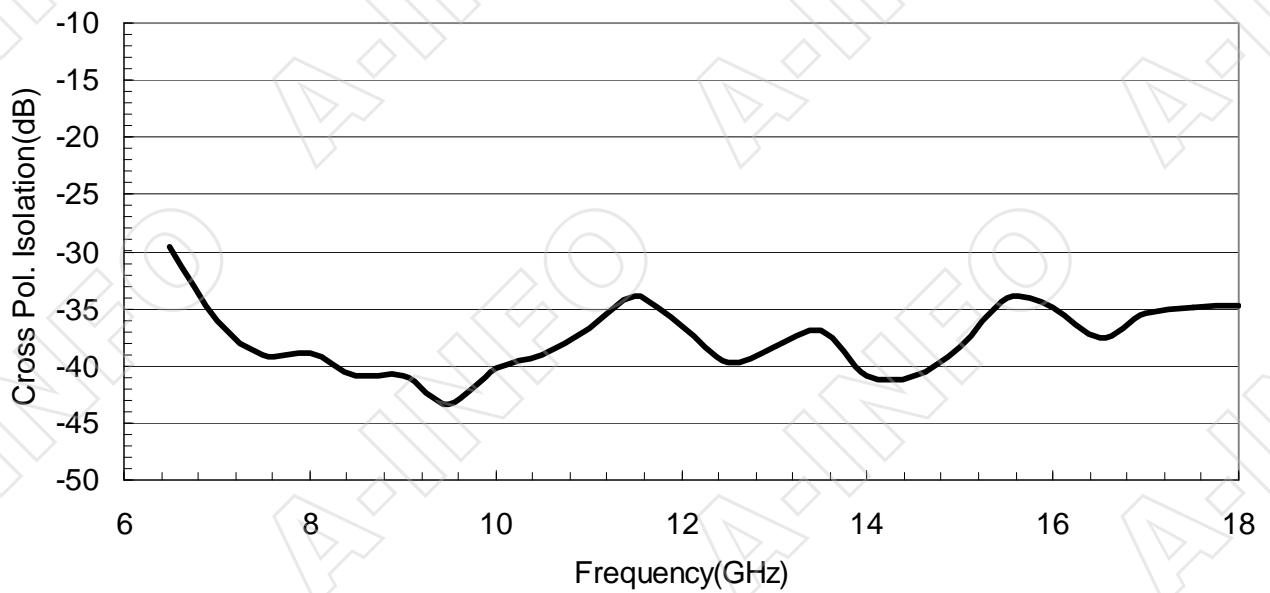


## Test Results

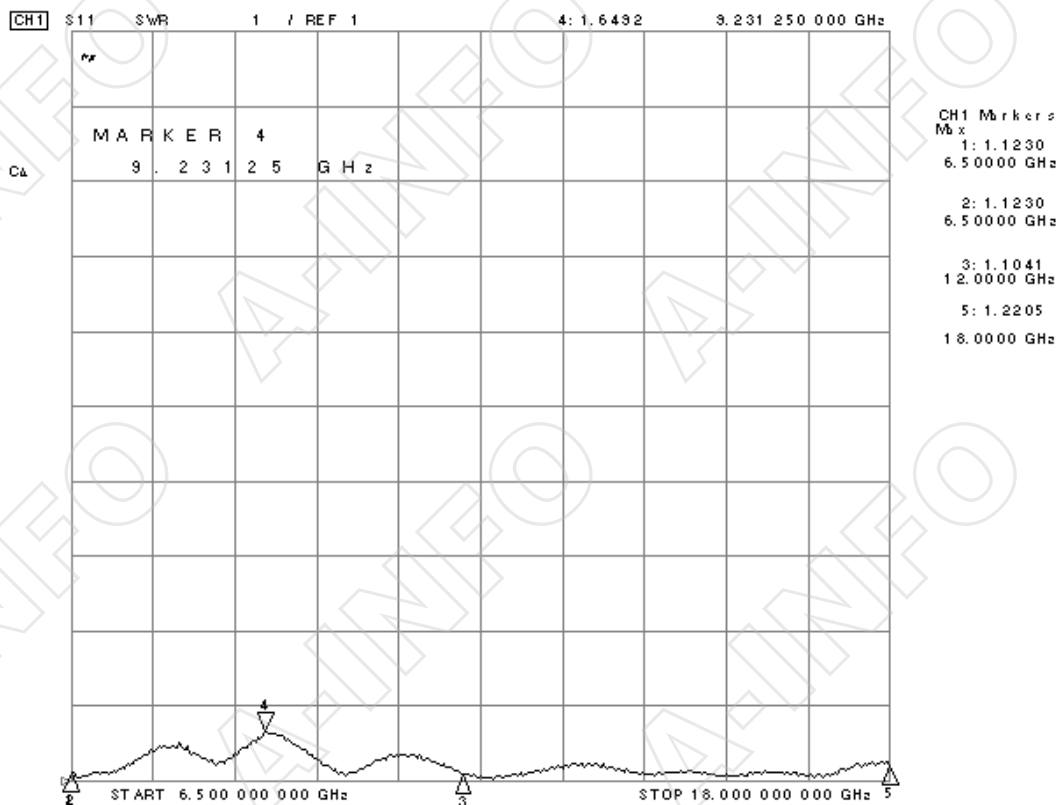
### 1. Gain



## 2. Cross Polarization Isolation

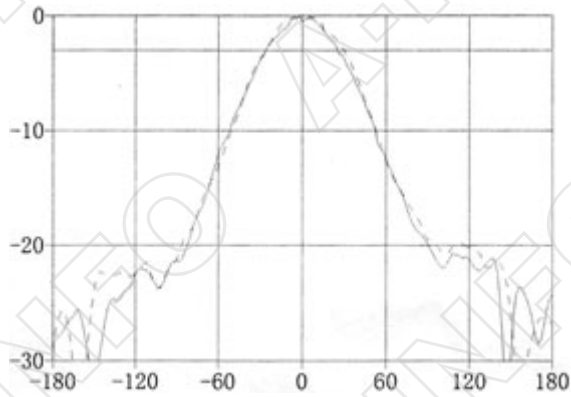


## 3. VSWR



## 4. Pattern

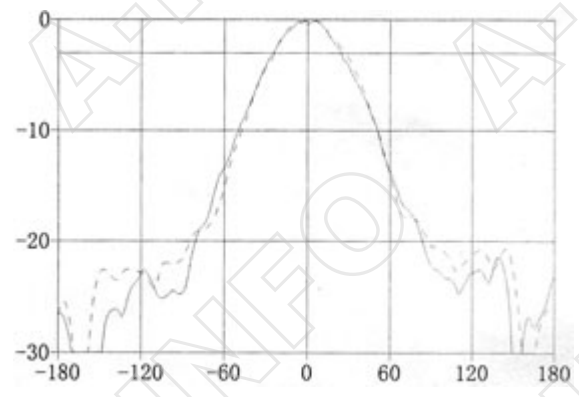
6.5GHz



H-Plane — E-Plane - - - -

3dB Beamwidth (deg): 51.20 3dB Beamwidth (deg): 55.41

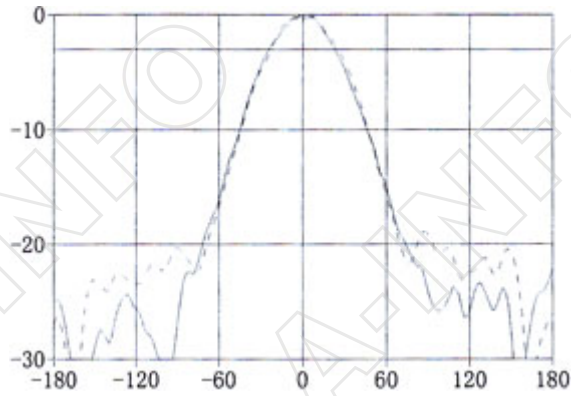
7.0GHz



H-Plane — E-Plane - - - -

3dB Beamwidth (deg): 49.24 3dB Beamwidth (deg): 51.21

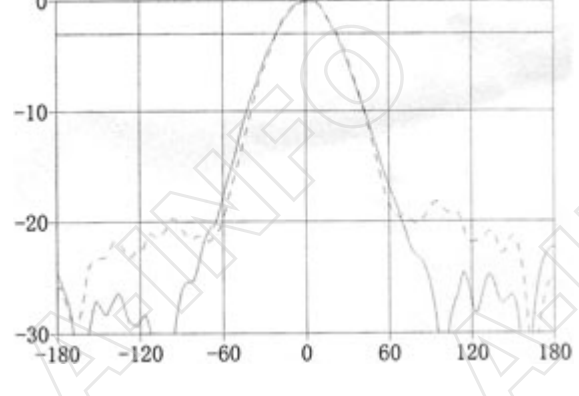
7.5GHz



H-Plane — E-Plane - - - -

3dB Beamwidth (deg): 47.03 3dB Beamwidth (deg): 48.13

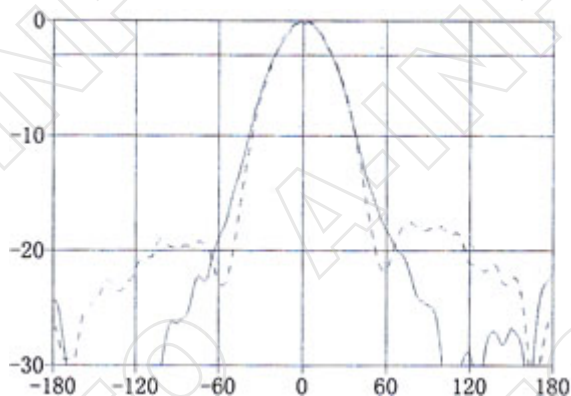
8.0GHz



H-Plane — E-Plane - - - -

3dB Beamwidth (deg): 43.41 3dB Beamwidth (deg): 44.15

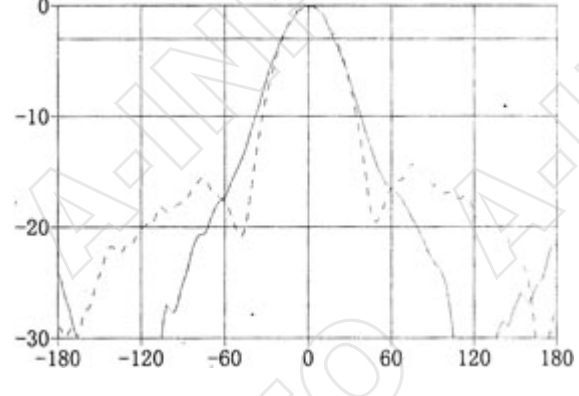
8.5GHz



H-Plane — E-Plane - - - -

3dB Beamwidth (deg): 40.45 3dB Beamwidth (deg): 41.11

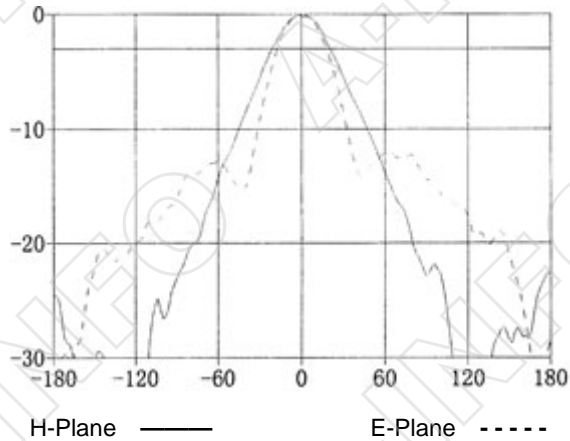
9.0GHz



H-Plane — E-Plane - - - -

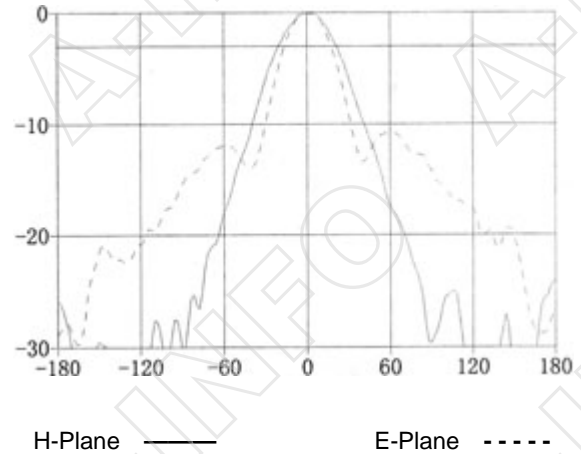
3dB Beamwidth (deg): 37.47 3dB Beamwidth (deg): 38.51

9.5GHz



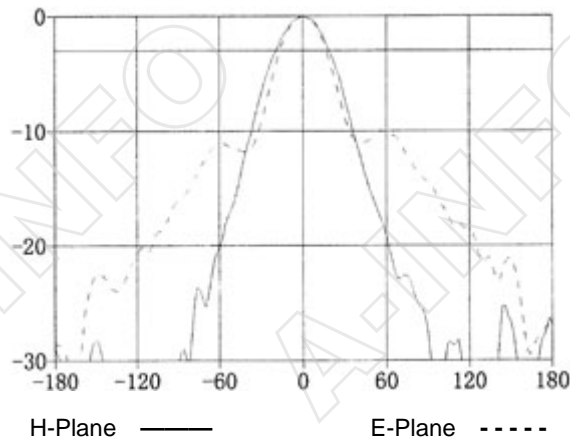
H-Plane ——— E-Plane - - - - -  
3dB Beamwidth (deg): 41.71    3dB Beamwidth (deg): 35.22

10.0GHz



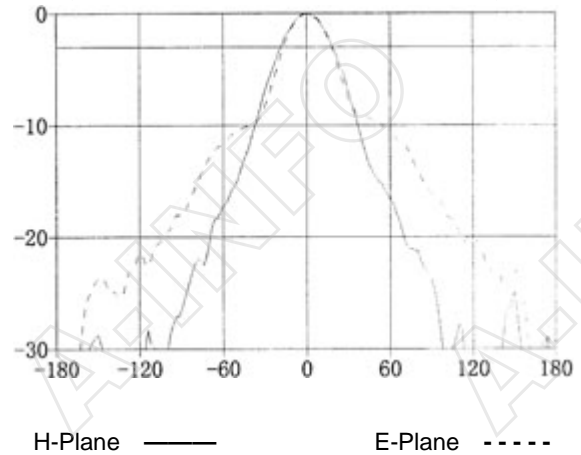
H-Plane ——— E-Plane - - - - -  
3dB Beamwidth (deg): 41.78    3dB Beamwidth (deg): 33.90

10.5GHz



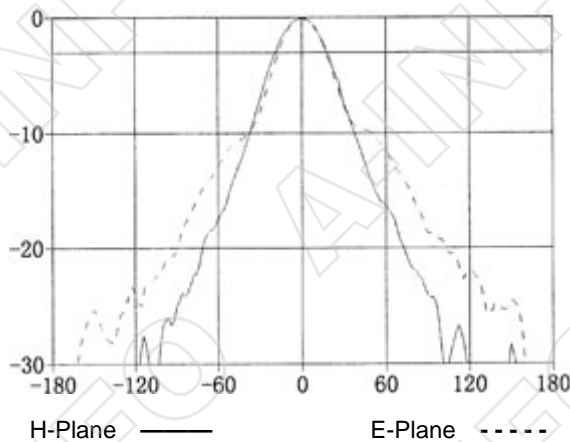
H-Plane ——— E-Plane - - - - -  
3dB Beamwidth (deg): 38.07    3dB Beamwidth (deg): 33.49

11.0GHz



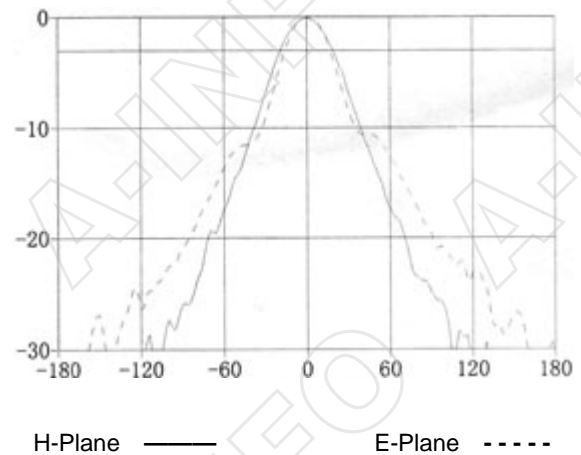
H-Plane ——— E-Plane - - - - -  
3dB Beamwidth (deg): 37.37    3dB Beamwidth (deg): 34.60

11.5GHz



H-Plane ——— E-Plane - - - - -  
3dB Beamwidth (deg): 36.84    3dB Beamwidth (deg): 34.07

12.0GHz



H-Plane ——— E-Plane - - - - -  
3dB Beamwidth (deg): 38.12    3dB Beamwidth (deg): 33.01



