

284WMT WR284 Waveguide Magic Tee 2.6-3.95GHz with Four Rectangular Waveguide Interfaces

WR284 Waveguide Magic Tee Operating From 2.6 to 3.95GHz with Four Rectangular Waveguide Interfaces

Product Information

SKU	284WMT
-----	--------

Description

Waveguide magic tee 284WMT, operating from 2.6 to 3.95GHz with a 0.4dB insertion loss, 40dB isolation, H-Plane VSWR 1.30:1 and E-Plane VSWR 1.50:1. 284WMT is a four-ports hybrid coupler or power divider. All the ports have standard WR284 waveguides with the same flanges FDP32(UDR32). The magic tee can be used as a power combiner or a power divider based on the given application's needs.

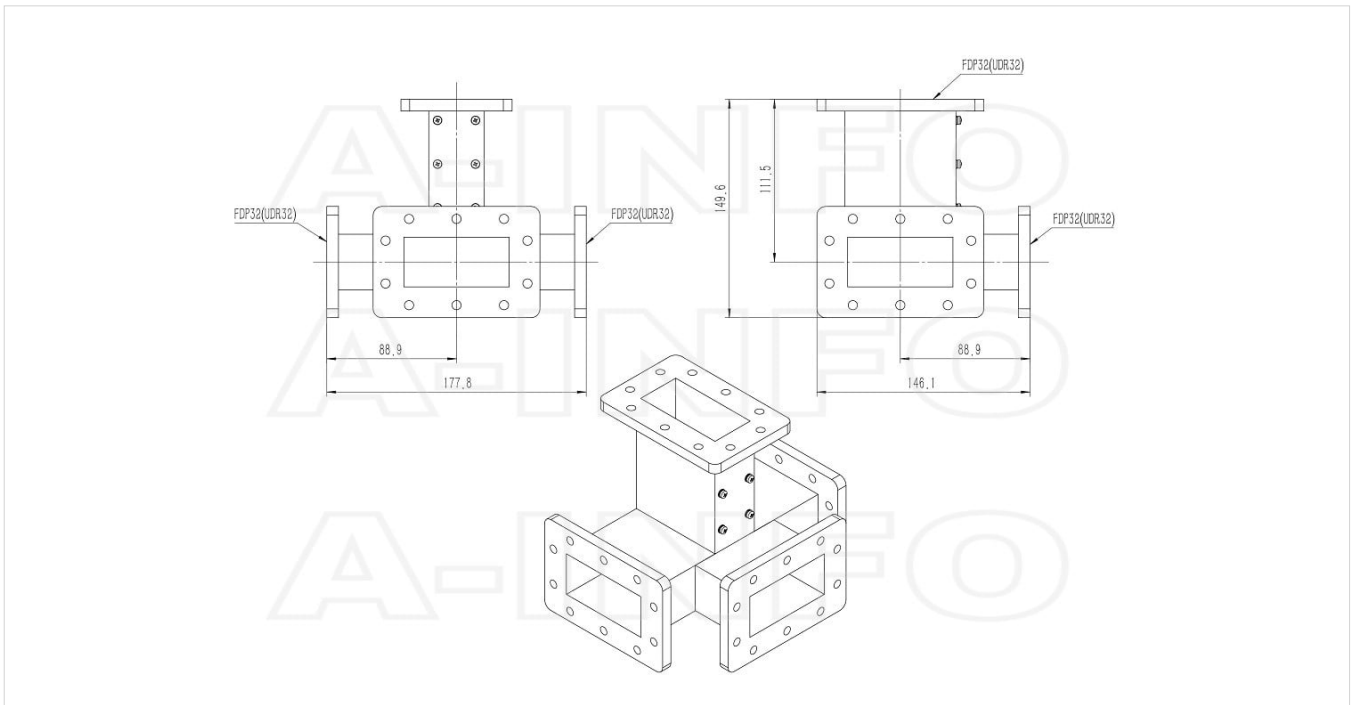
Technical Specification

Electrical Specification		Interface	
WG Tee Type	Magic Tee	Flange 3 Style	Rectangular
Waveguide Band	S	Flange 3 Type	Cover
Waveguide Type	Rectangular	Flange 3 Designation	FDP32(UDR32)
Waveguide Size EIA WR	WR284	Flange 4 Style	Rectangular
Frequency, Min (GHz)	2.6	Flange 4 Type	Cover
Frequency, Max (GHz)	3.95	Flange 4 Designation	FDP32(UDR32)
I.L., Typ (dB)	0.4	Mechanical Specification	
I.L., Max (dB)	0.6	Body Material	Al
VSWR, H-Plane, Typ	1.3	Size, L (mm)	177.8
VSWR, H-Plane, Typ	1.30:1	Size, W (mm)	146.1
VSWR, E-Plane, Typ	1.5	Size, H (mm)	149.6
VSWR, E-Plane, Typ	1.50:1	Weight, (kg)	0.99
Isolation, Min (dB)	30	Pressure Sealed	No
Isolation, Typ (dB)	40	Environmental Specification	
Power Handling, CW, (W)	5000	Operating Temp. Low (°C)	-55
Power Handling, Peak, (KW)	2500	Operating Temp. High (°C)	85
Interface		Storage Temp. Low (°C)	-60
Flange 1 Style	Rectangular	Storage Temp. High (°C)	90
Flange 1 Type	Cover		
Flange 1 Designation	FDP32(UDR32)		
Flange 2 Style	Rectangular		
Flange 2 Type	Cover		
Flange 2 Designation	FDP32(UDR32)		

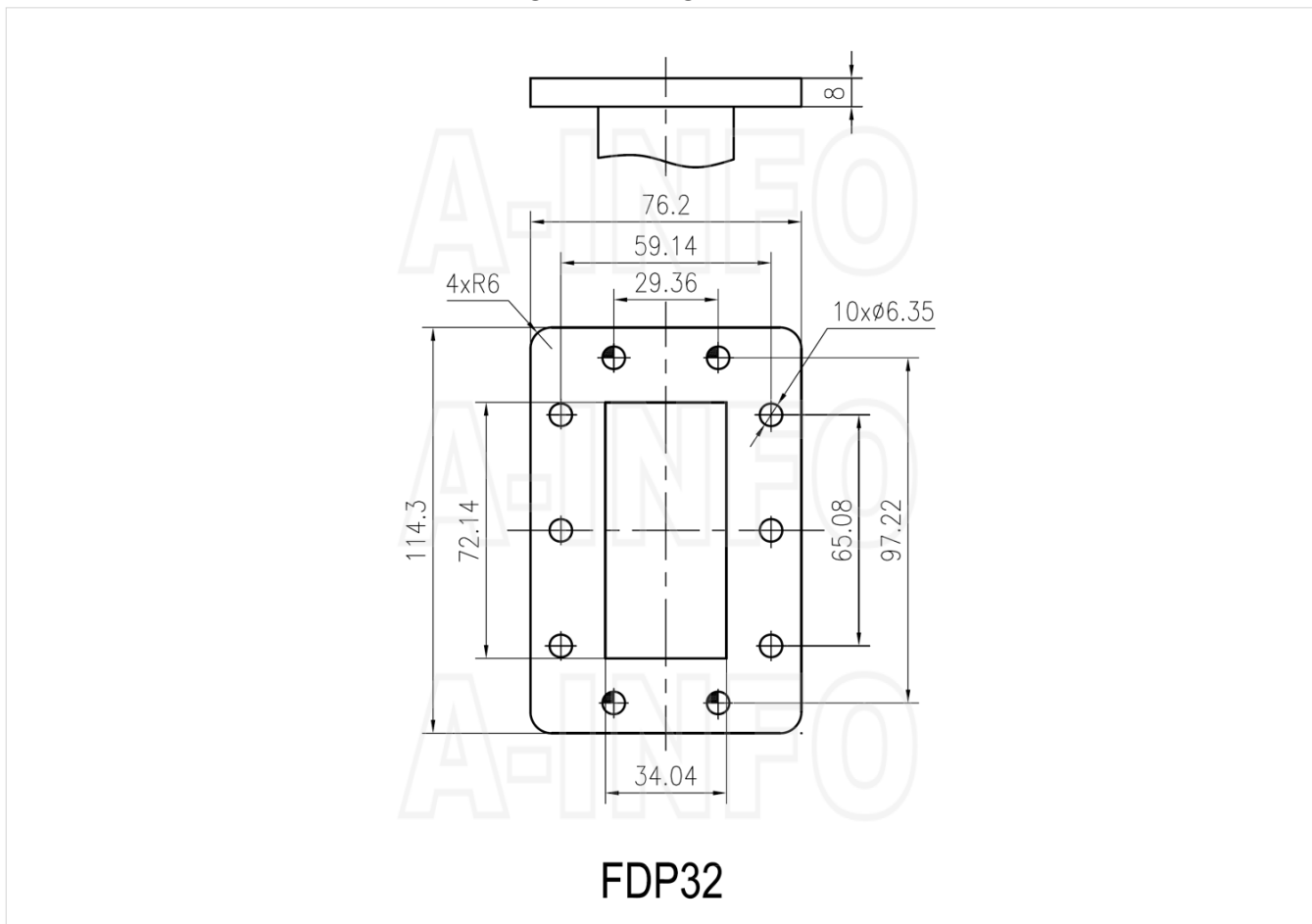
Additional Information

Application	General Purpose Indoor & Outdoor, Fixed
-------------	---

Outline Drawing(Size: mm)



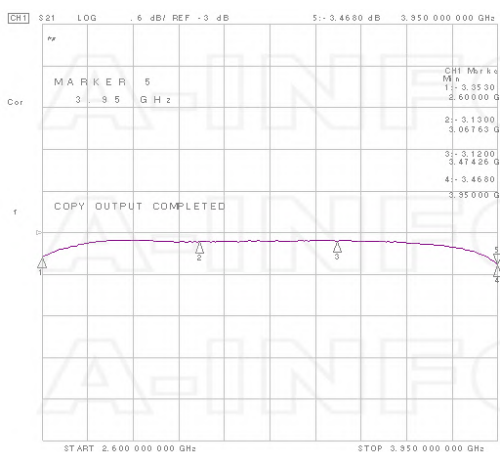
Flange Drawing(Size: mm)



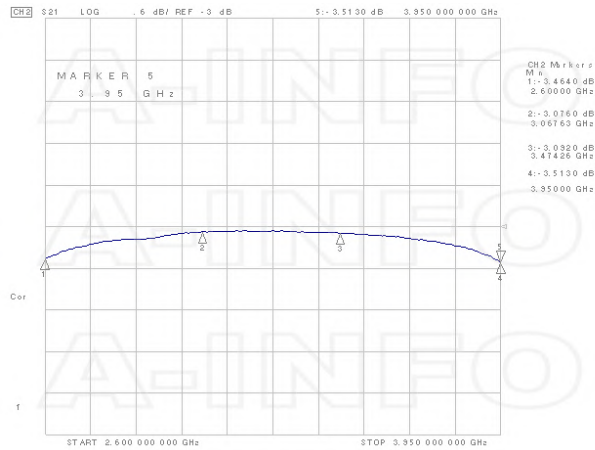
Typical Test Results

Insertion Loss(Including the theoretical loss 3.0dB)

E-Plane

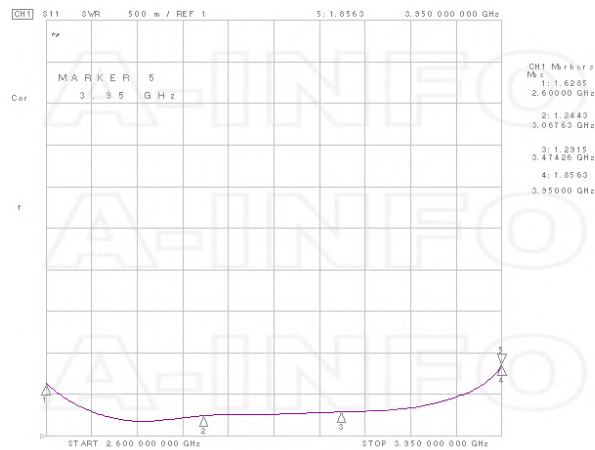


H-Plane

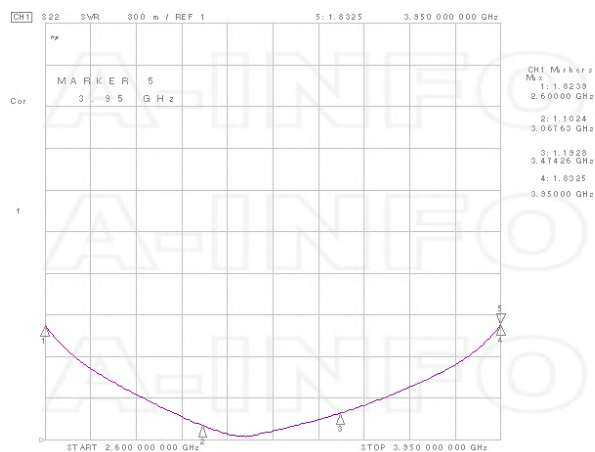


VSWR

E-Plane

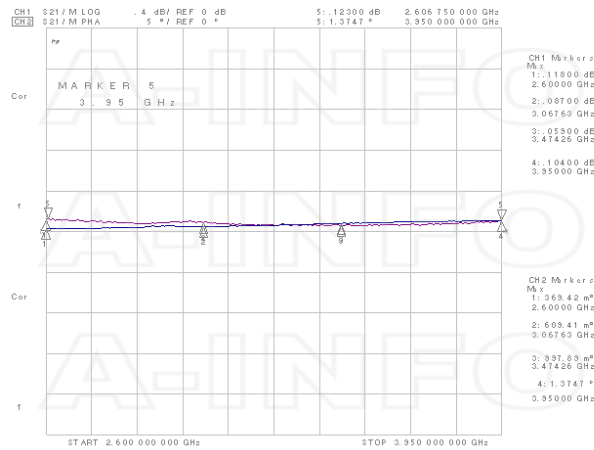


H-Plane

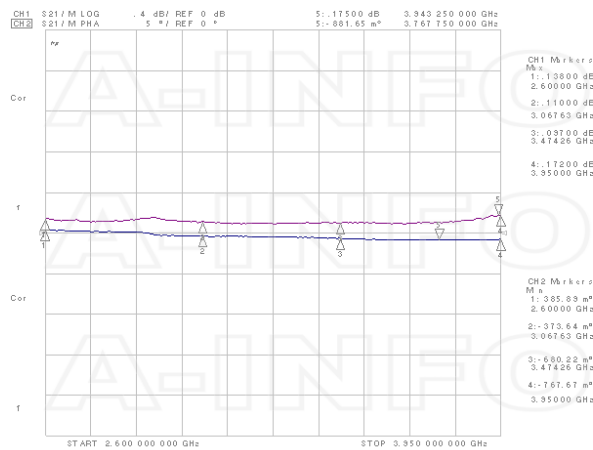


Unbalance

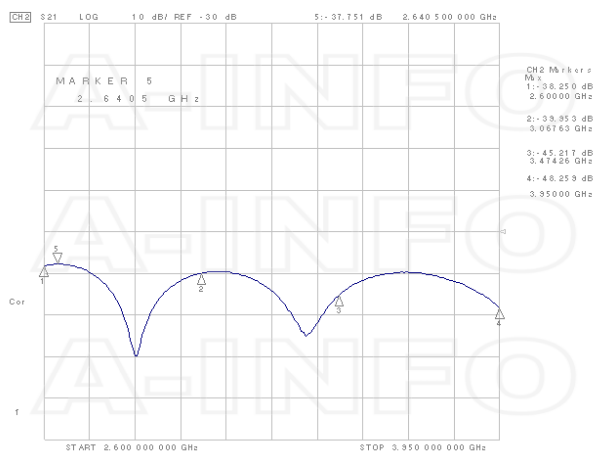
E-Plane



H-Plane



Isolation



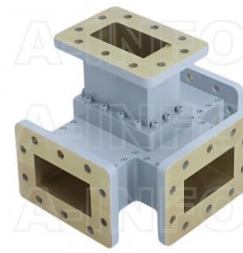
Similar Products



229WET WR229 Waveguide E-Plane Tee 3.3-4.9GHz with Three Rectangular Waveguide Interfaces



229WHT WR229 Waveguide H-Plane Tee 3.3-4.9GHz with Three Rectangular Waveguide Interfaces



229WMT WR229 Waveguide Magic Tee 3.3-4.9GHz with Four Rectangular Waveguide Interfaces



284WET WR284 Waveguide E-Plane Tee 2.6-3.95GHz with Three Rectangular Waveguide Interfaces



284WHT WR284 Waveguide H-Plane Tee 2.6-3.95GHz with Three Rectangular Waveguide Interfaces



284WMT_PM5 WR284 Waveguide Magic Tee 2.6-3.95GHz with Four Rectangular Waveguide Interfaces



284WMT_PM6 WR284 Waveguide Magic Tee 2.6-3.95GHz with Four Rectangular Waveguide Interfaces



340WET WR340 Waveguide E-Plane Tee 2.2-3.3GHz with Three Rectangular Waveguide Interfaces



340WHT WR340 Waveguide H-Plane Tee 2.2-3.3GHz with Three Rectangular Waveguide Interfaces



340WMT WR340 Waveguide Magic Tee 2.2-3.3GHz with Four Rectangular Waveguide Interfaces

About this Datasheet

<ul style="list-style-type: none">● Product Information <p>Product Link: https://www.ainfoinc.com/284wmt-wr284-waveguide-magic-tee-2-6-3-95-ghz-fdp32-udr32 Data subject to change without notice. © A-INFO INC. 2024. All Rights Reserved</p>	<ul style="list-style-type: none">● Contact Us <p>Address: 60 Tesla, Irvine, CA 92618, USA</p> <p>Website: www.ainfoinc.com</p> <p>Email: sales@ainfoinc.com</p>	<ul style="list-style-type: none">● Phone & Fax <p>Phone: +1-949-639-9688 +1-949-639-9608</p> <p>Fax: +1-949-639-9670</p>
--	---	--