



全創科技

TFT ROADMAP & NEW PRODUCTS

MULTI-INNO TECHNOLOGY CO., LTD
全創科技有限公司

[Http://www.multi-inno.com](http://www.multi-inno.com)



CONTENTS

■ TFT ROADMAP

1.	~3.0"	4
2.	3.0" ~ 6.0"	5
3.	6.0" ~ 9.0"	6
4.	9.0" ~ 12.0"	7
5.	12.0" ~ 15.0"	8
6.	15.0" ~ 21.5"	9

■ TFT NEW PRUDUCTS INTRODUCTION

1.	MI0096AT-1	10
2.	MI0145B1T-2A	11
3.	MI0213AT-1	12
4.	MI0240AFT-2	13
5.	MI0260ET-1	14
6.	2.83inch Family	15
7.	MI0350ACT-5RP	17
8.	MI0350AST-1	18
9.	MI0350AUT-1	19
10.	MI0350AYT-1	20
11.	MI0420ET-1	21
12.	5.7inch VGA MI0570E2T-1 Series	22
13.	5.7inch VGA High Brightness MI0570E2T-2 Series	23
14.	MI0570ET LVDS Interface	24
15.	MI0620DT-1	25
16.	MI0700BUT-1	26
17.	MI1010AAT-2	27
18.	MI1010ART-1	28
19.	MI1010ART-1HB	30
20.	Bar Type TFT Display	32



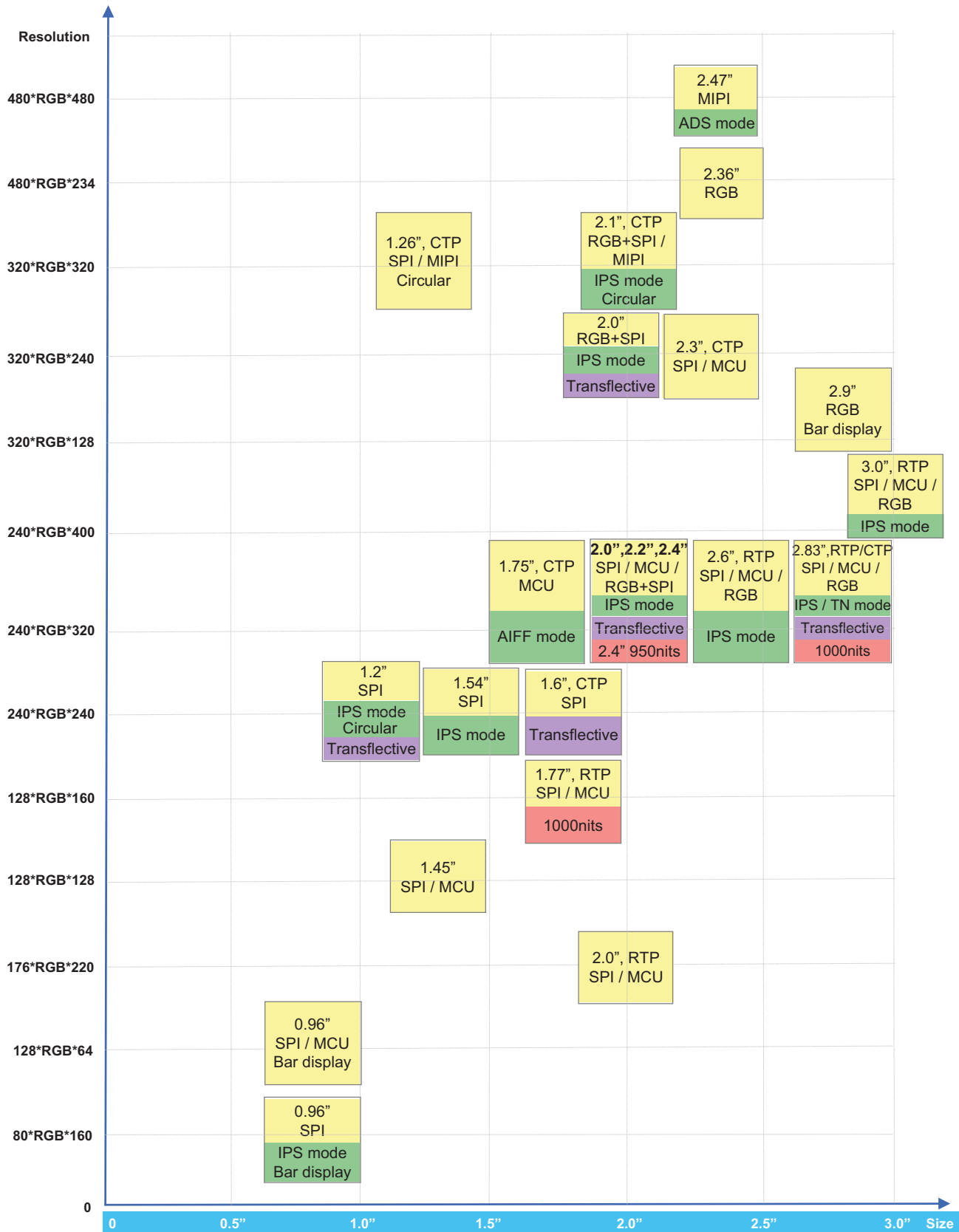
■ FUNCTION BOARD INTRODUCTION

1. FTDI Function Board	33
2. SSD1963 Function Board	35
3. HDMI Function Board	37

TFT Roadmap

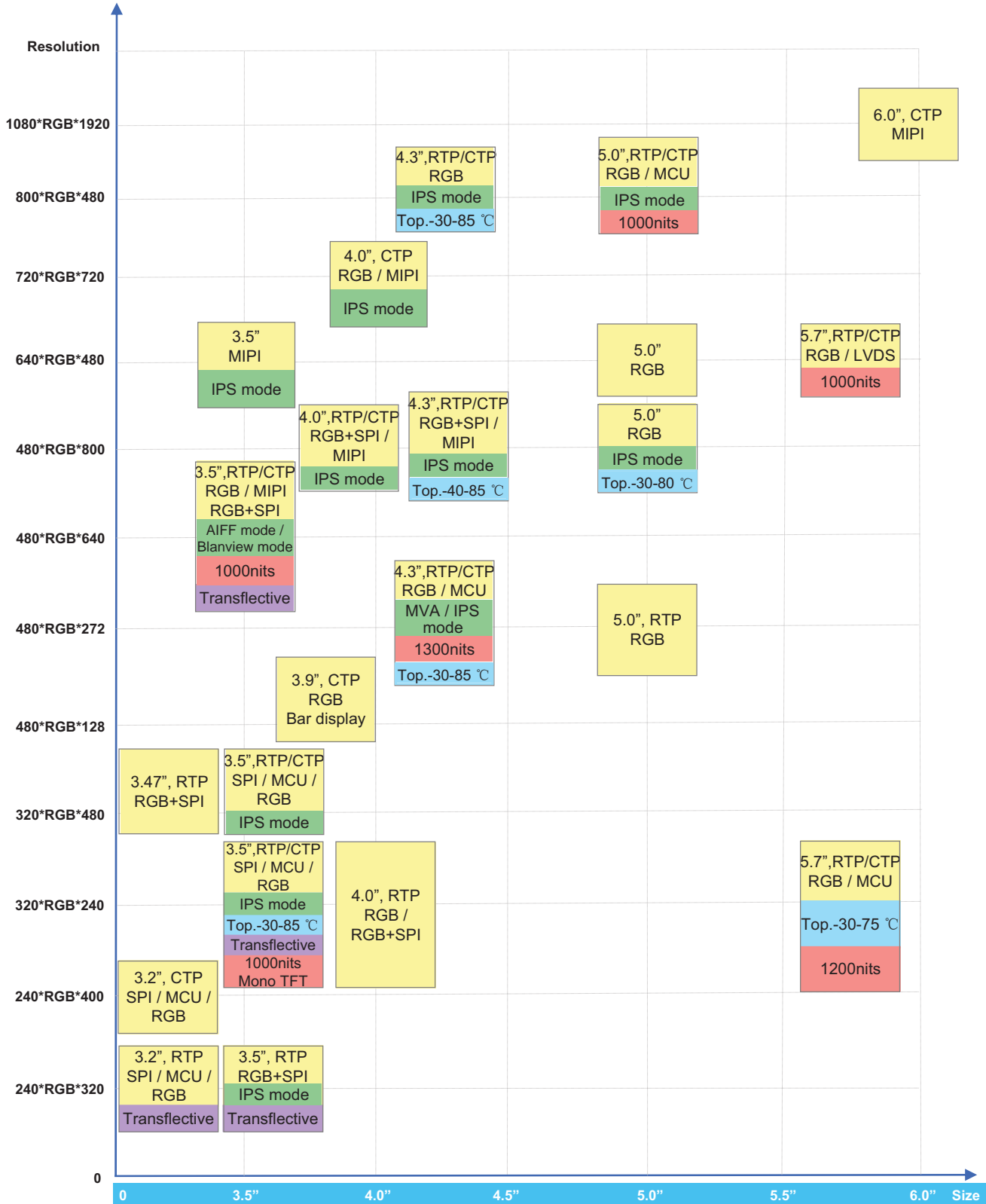
~ 3.0"

- Standard
- Full view angle
- High brightness
- Wide temperature
- Transflective



TFT Roadmap

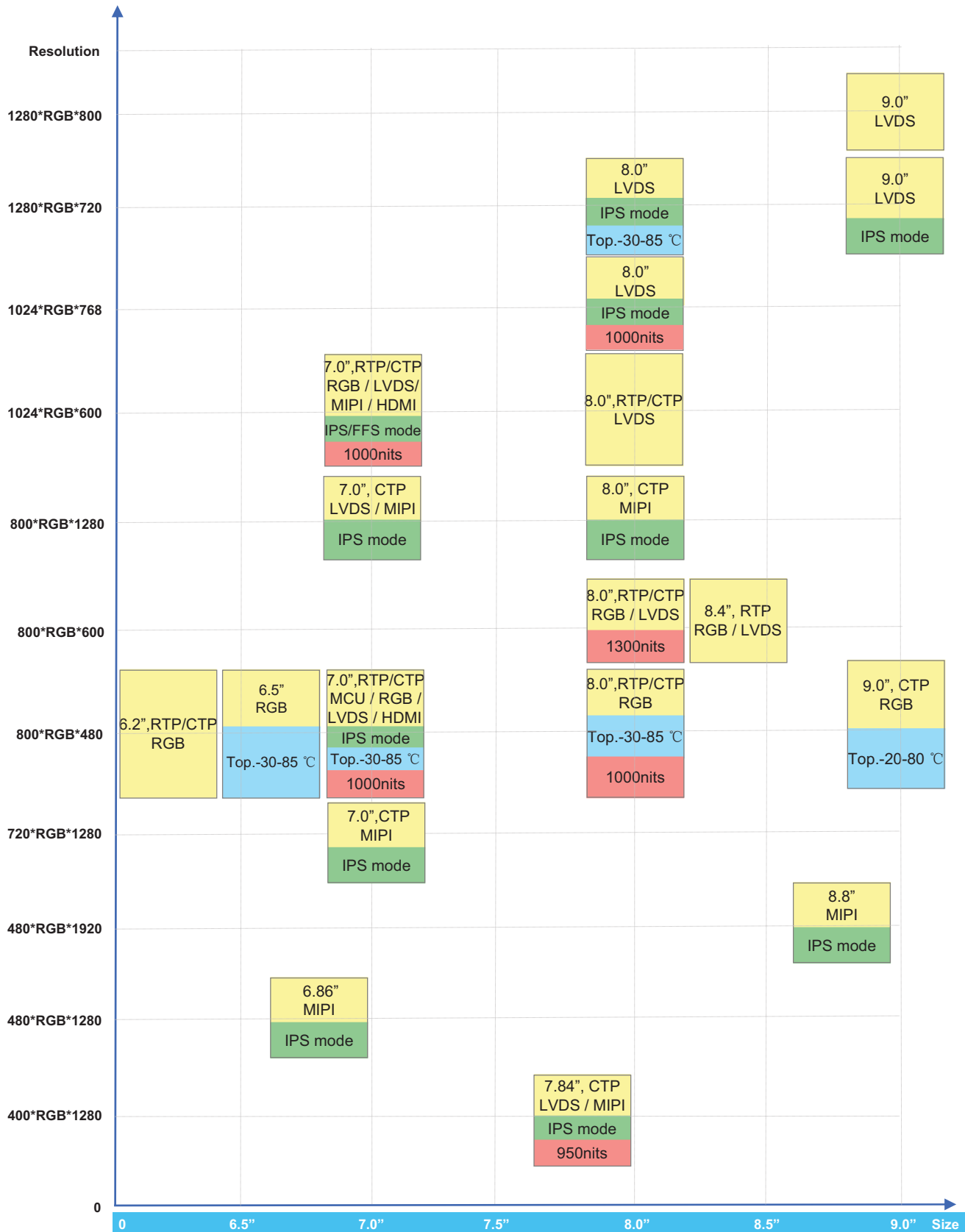
3.0" ~ 6.0"



TFT Roadmap

6.0" ~ 9.0"

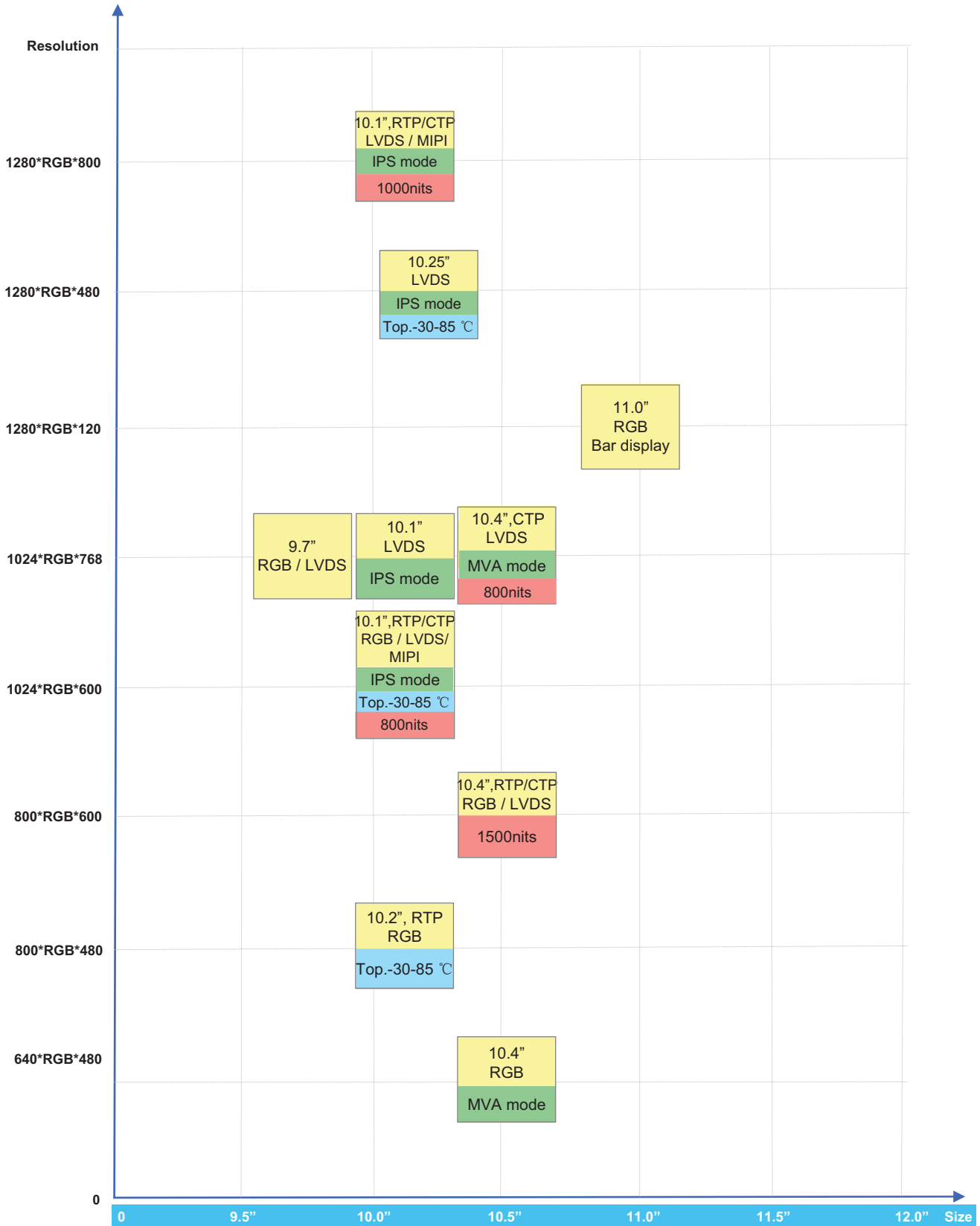
Standard	Full view angle	High brightness	Wide temperature	Transflective
----------	-----------------	-----------------	------------------	---------------



TFT Roadmap

9.0" ~ 12.0"

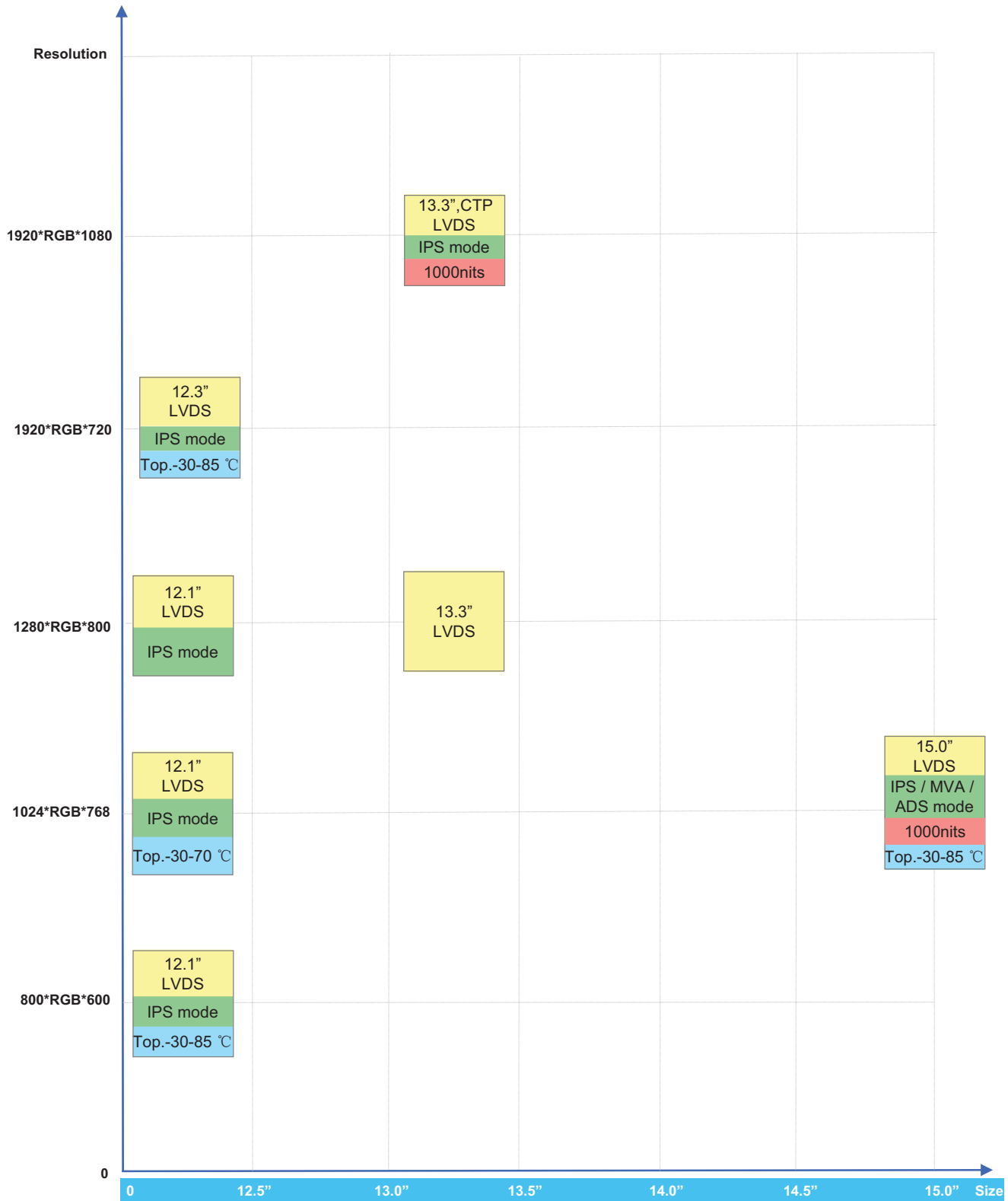
Standard	Full view angle	High brightness	Wide temperature	Transflective
----------	-----------------	-----------------	------------------	---------------



TFT Roadmap

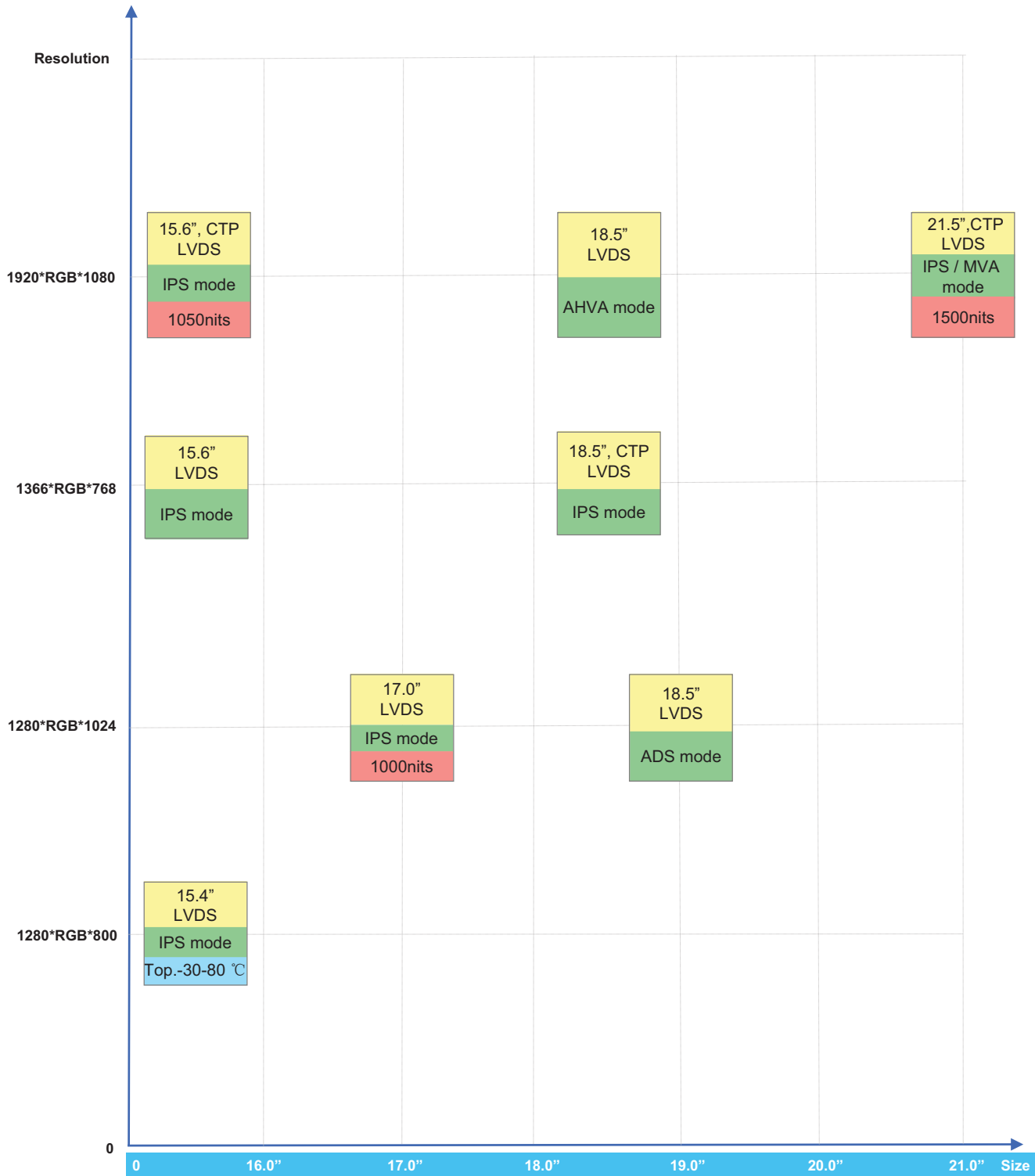
12.0"~15.0"

- Standard
- Full view angle
- High brightness
- Wide temperature
- Transflective



TFT Roadmap

15.0"~21.5"





New Products Introduction

-Sept. 14th, 2017-

TFT | 0.96inch Bar Display - MI0096AT-1

P/N	MI0096AT-1	Size (inch)	0.96
Resolution	128xRGBx64	Viewing Direction	6:00
A.A. (mm)	21.744x10.864	Outline Size (mm)	26.70x19.26x1.60
Contrast (Cr)	87	Brightness (nits)	240
Operating Temp.	-20°C~70°C	Storage Temp.	-30°C ~80°C
Interface	3-wire/4-wire SPI 8-bit parallel MCU		



DETAIL A (SCALE 40:1)

BACKLIGHT CIRCUIT DIAGRAM

PIN DESCRIPTION	
PIN	SYMBOL
1	NC
2	NC
3	NC
4	NC
5	NC
6	NC
7	NC
8	GND
9	VDD
10	NC
11	SPI
12	IM2
13	CSX
14	RESX
15	RS/SCL
16	WRX/AO
17	RDX
18	DO/SDA
19	D1
20	D2
21	D3
22	D4
23	D5
24	D6
25	D7
26	NC
27	NC
28	VDD
29	LEDA
30	LEDK

IM2	SPI	INTERFACE	PIN IN USE
1	0	MCU 8-BIT	CSX,RESX,RS,WRX,RDX,DO-D7
0	0	3-LINE SPI	CSX,RESX,SCL,SDA
	1	4-LINE SPI	CSX,RESX,AO,SCL,SDA

NOTE: RDX, AO, D1-D7, IF NOT USED, PLEASE TIE IT TO GND.

NOTES:

- DISPLAY TYPE: TFT, TRANSMISSIVE, NORMALLY WHITE
- OPERATING VOLTAGE: VDD~2.8V(TYP.), VDDI~1.8V/2.8V
- VIEWING DIRECTION: 6 O'CLOCK
- DRIVER IC: ST7735S
- INTERFACE: 3-/4-WIRE SPI, MCU 8-BIT PARALLEL
- OPERATING TEMP.: -20°C ~ 70°C
- STORAGE TEMP.: -30°C ~ 80°C
- LED BACKLIGHT: 1-CHIP WHITE LED, IF=15mA, VF=2.8V~3.2V
- SURFACE LUMINANCE: 240CD/M² (TYP.)
- TOP POLARIZER SURFACE TREATMENT: ANTI-GLARE
- RECOMMENDED CASE OPEN AREA SHOULD BE LESS THAN MODULE VA
- GENERAL TOLERANCE: ±0.2MM
- ROHS COMPLIANT

MULTI-INNO TECHNOLOGY CO., LTD.

DRAWN BY: JACK	DATE: 2017.09.18	SCALE: 1/1	MODULE P/N: MI0096AT-1
CHECKED BY:	DATE: 2017.12.06	UNIT: mm	DESCRIPTION: TFT MODULE
APPROVED BY:	DATE:	SHEET NO.: 1/1	
VERSION NO: 02	REVISER:	DATE:	



New Products Introduction

-Sept. 14th, 2017-

TFT | 1.45inch - MI0145B1T-2A

P/N	MI0145B1T-2A	Size (inch)	1.45
Resolution	128xRGBx128	Viewing Direction	6:00
A.A. (mm)	25.50x26.50	Outline Size (mm)	32.36x38.00x2.60
Contrast (Cr)	500	Brightness (nits)	240
Operating Temp.	-20°C~70°C	Storage Temp.	-30°C ~80°C
Interface	3-/4-wire SPI		



NOTES:

1. DISPLAY TYPE: TFT, TRANSMISSIVE, NORMALLY WHITE
2. OPERATING VOLTAGE: VDD=2.8V (TYP.)
3. VIEWING DIRECTION: 6 O'CLOCK
4. DRIVER IC: ST7735S
5. OPERATING TEMP.: -20°C ~ 70°C
6. STORAGE TEMP.: -30°C ~ 80°C
7. LED BACKLIGHT: 1-CHIP WHITE LED, IF=15mA, VF=3.2V±0.2V
8. SURFACE LUMINANCE: 240CD/M² (TYP.)
9. TOP POLARIZER SURFACE TREATMENT: CLARE
10. GENERAL TOLERANCE: ±0.2MM
11. ROHS COMPLIANT
12. LCM PIN IS SET TO HIGH ON THE FPC (NORMALLY BLACK DISPLAY MODE)

DETAIL A (SCALE 40:1)

BACKLIGHT CIRCUIT DIAGRAM

PIN DESCRIPTION	
PIN	SYMBOL
1	A
2	K
3	SPW0/SPW4W
4	VDD
5	VSS
6	/CS
7	RESET
8	S0A
9	S0L
10	RS

MULTI-INNO TECHNOLOGY CO., LTD.	
04 CORRECT THE SIZE OF D.S.I.	REX 2020.08.06
01 ADD NOTE 12.	REX 2018.11.30
02 CHANGE DRIVER IC TO ST7735S	JACK 2017.02.08
01 FIRST ISSUE	JACK 2016.12.21
VER. REVISED DESCRIPTION	REVISER DATE
DRAWN BY: JACK	2017.02.08
CHECKED BY:	
APPROVED BY:	
VERSION NO: 04	
SCALE : 1/1	MODULE P/N: MI0145B1T-2A
UNIT: mm	DESCRIPTION: TFT MODULE

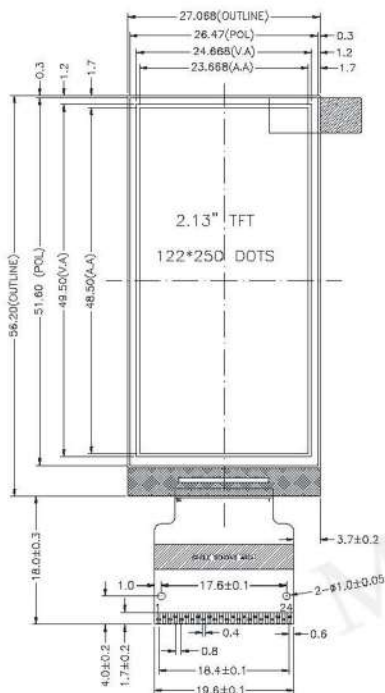


New Products Introduction

-Apr. 23rd, 2020-


2.13inch Mono TFT | Reflective Type | Ultra-low Power Consumption | Sunlight Readable

P/N	MI0213AT-1	Size (inch)	2.13
Display Mode	Reflective TFT	Viewing Direction	Free
Resolution	122 x 250	Display Color	Mono
A.A. (mm)	23.668 x 48.50	Outline Size (mm)	27.068 x 56.20 x 1.05
Contrast (Cr)	14	Reflectance (%)	10
Operating Temp.	-20°C ~ 70°C	Storage Temp.	-30°C ~ 80°C
Interface	4- wire SPI	Driver IC	ST7302



PIN DESCRIPTION	
PIN	SYMBOL
1	CD2P
2	CD2N
3	NC
4	VGL
5	VGH
6	CD1P
7	CD1N
8	NC
9	NC
10	RSTB
11	A0
12	CSB
13	SCL
14	SDA
15	VDDI
16	VDDI
17	GND
18	VCCI/VCCO
19	VMREF
20	VSH
21	VCOMH
22	VSL
23	AVDD
24	NC(VCOM)

- NOTES:
1. DISPLAY TYPE: MONO TFT, REFLECTIVE, NORMALLY WHITE.
 2. OPERATING VOLTAGE: VDDI=2.8V.
 3. VIEWING DIRECTION: FULL VIEWING ANGLE.
 4. IC DRIVER: ST7302.
 5. OPERATING TEMP: -20°C ~ 70°C.
 6. STORAGE TEMP: -30°C ~ 80°C.
 7. TOP POLARIZER SURFACE TREATMENT: GLARE.
 8. GENERAL TOLERANCE: ±0.2MM.
 9. ROHS COMPLIANT.

 MULTI-INNO TECHNOLOGY CO.,LTD.		MODULE P/N:	
DRAWN BY: CAROL	2019.08.06	SCALE: 1/1	MI0213AT-1
CHECKED BY:		UNIT: mm	DESCRIPTION:
APPROVED BY:		SHEET NO.: 1/1	TFT MODULE
VERSION NO: 01			

01	FIRST ISSUE	CAROL	2019.08.06
VER.	REVISED DESCRIPTION	REVISOR	DATE

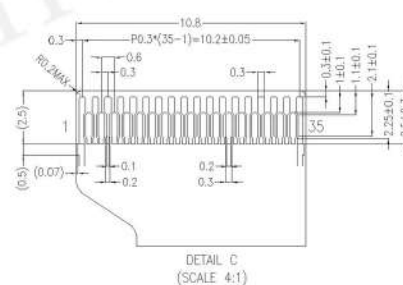
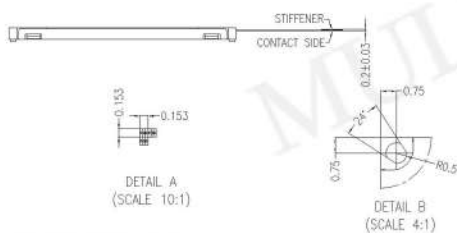
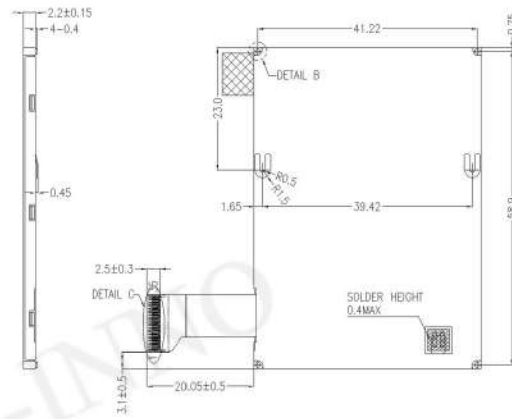
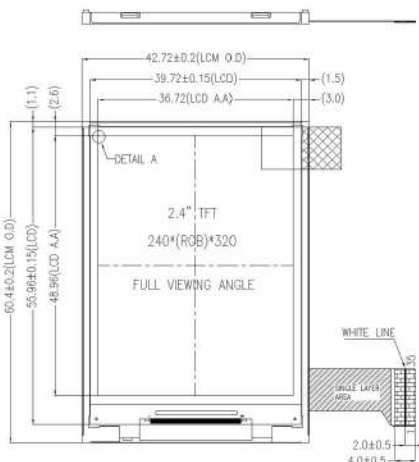


New Products Introduction

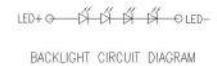
-May. 16th, 2018-

2.4inch IPS TFT | Full Viewing Angle - MI0240AFT-2

P/N	MI0240AFT-2	Size (inch)	2.40
Resolution	240xRGBx320	Viewing Direction	Full viewing angle
A.A. (mm)	36.72x48.96	Outline Size (mm)	42.72x60.40x2.20
Contrast (Cr)	800	Brightness (nits)	600
Operating Temp.	-20°C~70°C	Storage Temp.	-30°C ~80°C
Interface	8-/9-/16-/18-bit parallel MCU		



PIN DESCRIPTION	
PIN	SYMBOL
1	GND
2	IM0
3	IM1
4	FMARK
5	NC
6	DB17
7	DB16
8	DB15
9	DB14
10	DB13
11	DB12
12	DB11
13	DB10
14	DB9
15	DB8
16	IOVCC
17	DB7
18	DB6
19	DB5
20	DB4
21	DB3
22	DB2
23	DB1
24	DB0
25	/CS
26	RS
27	/WR
28	/RD
29	/RESET
30	VCI
31	GND
32	LED+
33	GND
34	LED-
35	GND



- NOTES:
1. DISPLAY TYPE: IPS TFT, TRANSMISSIVE, NORMALLY BLACK
 2. OPERATING VOLTAGE: VCI/IOVCC=2.8V (TYP.)
 3. VIEWING DIRECTION: FULL VIEWING ANGLE
 4. DRIVER IC: ILI9341V
 5. OPERATING TEMP.: -20°C ~ 70°C
 6. STORAGE TEMP.: -30°C ~ 80°C
 7. LED BACKLIGHT: 4-CHIP WHITE LED, IF=20mA, VF=12V~12.8V~13.8V
 8. SURFACE LUMINANCE: 600CD/M² (TYP.)
 9. TOP POLARIZER SURFACE TREATMENT: ANTI-GLARE
 10. RECOMMEND MATCHING CONNECTOR: FH26-35S-0.35WH OR EQUIVALENT
 11. THE SINGLE LAYER AREA OF FPC IS BENDABLE AND THE BENDING RADIUS MUST BE NOT LESS THAN 1.5MM
 12. GENERAL TOLERANCE: ±0.2MM
 13. ROHS COMPLIANT

		MULTI-INNO TECHNOLOGY CO., LTD.	
DRAWN BY:	CAROL 2015.12.25		MODULE P/N:
CHECKED BY:		SCALE: 1/1	MI0240AFT-2
APPROVED BY:		UNIT: mm	DESCRIPTION:
VERSION NO:	01	SHEET NO.: 1/1	TFT MODULE

Q1	FIRST ISSUE	CAROL	2015.12.25
VER.	REVISED DESCRIPTION	REVISER	DATE



New Products Introduction

-May. 16th, 2018-

2.6inch TFT | Full Viewing Angle - MI0260ET-1

P/N	MI0260ET-1	Size (inch)	2.60
Resolution	240xRGBx320	Viewing Direction	Full viewing angle
A.A. (mm)	39.60x52.80	Outline Size (mm)	46.00x64.00x3.10
Contrast (Cr)	500	Brightness (nits)	350
Operating Temp.	-20°C~70°C	Storage Temp.	-30°C ~80°C
Interface	8-/9-/16-/18-bit parallel MCU; 6-/16-18-bit parallel RGB; 3-/4-wire SPI	Touch Panel (Selectable)	RTP



NOTES:

1. DISPLAY TYPE: TFT, TRANSMISSIVE, NORMALLY BLACK
2. OPERATING VOLTAGE: VDD=2.8V (TYP.)
3. VIEWING DIRECTION: FULL VIEWING ANGLE
4. DRIVER IC: ILI9341V
5. OPERATING TEMP.: -20°C ~ 70°C
6. STORAGE TEMP.: -30°C ~ 80°C
7. LED BACKLIGHT: 6-CHIP WHITE LED, IF=120mA, VF=3.2V
8. SURFACE LUMINANCE: 350CD/M² (TYP.)
9. TOP POLARIZER SURFACE TREATMENT, ANTI-GLARE
10. THE SINGLE LAYER AREA OF FPC IS BENDABLE AND THE BENDING RADIUS MUST BE NOT LESS THAN 1.5MM
11. GENERAL TOLERANCE: ±0.2MM
12. ROHS COMPLIANT

NO.	SYMBOL	DESCRIPTION
1	GM1	GM1
2	GM2	GM2
3	GM3	GM3
4	GM4	GM4
5	MI1	MI1
6	MI2	MI2
7	MI3	MI3
8	CS	CS
9	RS(SCL)	RS(SCL)
10	RS(SDA)	RS(SDA)
11	RD	RD
12	SPKNC	SPKNC
13	SPKNC	SPKNC
14	ENABLE	ENABLE
15	BUTCLK	BUTCLK
16	SDM	SDM
17	BR0	BR0
18	BR1	BR1
19	BR2	BR2
20	BR3	BR3
21	BR4	BR4
22	BR5	BR5
23	BR6	BR6
24	BR7	BR7
25	BR8	BR8
26	BR9	BR9
27	BR10	BR10
28	BR11	BR11
29	BR12	BR12
30	BR13	BR13
31	DB14	DB14
32	DB15	DB15
33	DB16	DB16
34	DB17	DB17
35	NC	NC
36	LED+	LED+
37	LED+	LED+
38	LED+	LED+
39	LED+	LED+
40	LED+	LED+
41	LED+	LED+
42	LED+	LED+
43	NC	NC
44	NC	NC
45	NC	NC
46	NC	NC
47	DMO	DMO
48	DMO	DMO
49	DMO	DMO
50	DMO	DMO

NO.	MI	MO	MCU-INTERFACE MOSE	BR PIN FPC	CONM
0	0	0	80 MCU 8-BIT BUS	(E7-0)	(E7-0)
0	0	1	80 MCU 16-BIT BUS	(E7-0)	(E15-0)
0	1	0	80 MCU 8-BIT BUS	(E7-0)	(E6-0)
0	1	1	80 MCU 16-BIT BUS	(E7-0)	(E15-0)
1	0	1	3-WIRE 9-BIT DATA SERIAL	SDA+/SDA-	
1	1	0	4-WIRE 8-BIT DATA SERIAL	SMA+/SMA-	

BACKLIGHT CIRCUIT DIAGRAM



2.83inch Products Family

• TFT List

P/N	Size Inch	Resolution	A.A. (mm)	Outline Size (mm)	Contrast (Cr)	Brightness (nits)	Top. (°C)	Tstor. (°C)	Interface	Controller (Selectable)	TP (Selectable)	Viewing Direction
MI0283QT-9A-1 MI0283Q3T-9A-1	2.83	240xRGBx320	43.20x57.60	50.20x69.30x2.90	500	300	-20-70	-30-80	CPU,RGB,SPI	● ILI9341V ● ST7789V2	● RTP ● CTP	6:00
MI0283QT-13 MI0283Q3T-13	2.83	240xRGBx320	43.20x57.60	50.20x69.30x2.90	500	300	-20-70	-30-80	CPU,RGB,SPI	● ILI9341V ● ST7789V2	● RTP ● CTP	6:00
MI0283QT-17	2.83	240xRGBx320	43.20x57.60	50.20x69.30x2.90	500	650	-20-70	-30-80	CPU,RGB,SPI	ILI9341V	● RTP ● CTP	6:00
MI0283QT-22 MI0283Q3T-22	2.83	240xRGBx320	43.20x57.60	50.20x69.30x2.90	500	300	-20-70	-30-80	CPU,RGB,SPI	● ILI9341V ● ST7789V2	● CTP	6:00
MI0283AAT-4	2.83	240xRGBx320	43.20x57.60	50.50x69.70x2.60	800	500	-20-70	-30-80	CPU,RGB,SPI	ST7789V2	● CTP	Free
MI0283AGT-1 (Transflective)	2.83	240xRGBx320	43.20x57.60	50.00x69.20x2.85	70	150	-20-70	-30-80	CPU,SPI	R61505W	● CTP	3:00

• RTP List

P/N	Size (inch)	Outline size (mm)	VA area (mm)	AA area (mm)	Trans. %	Chattering time	Top. (°C)	Tstor. (°C)	Remark
MI0283QP	2.83"	49.50x68.60x1.20	44.80x59.20	44.20x58.60	80	15ms	-20-70	-30-80	FPC for hot bar

• CTP List

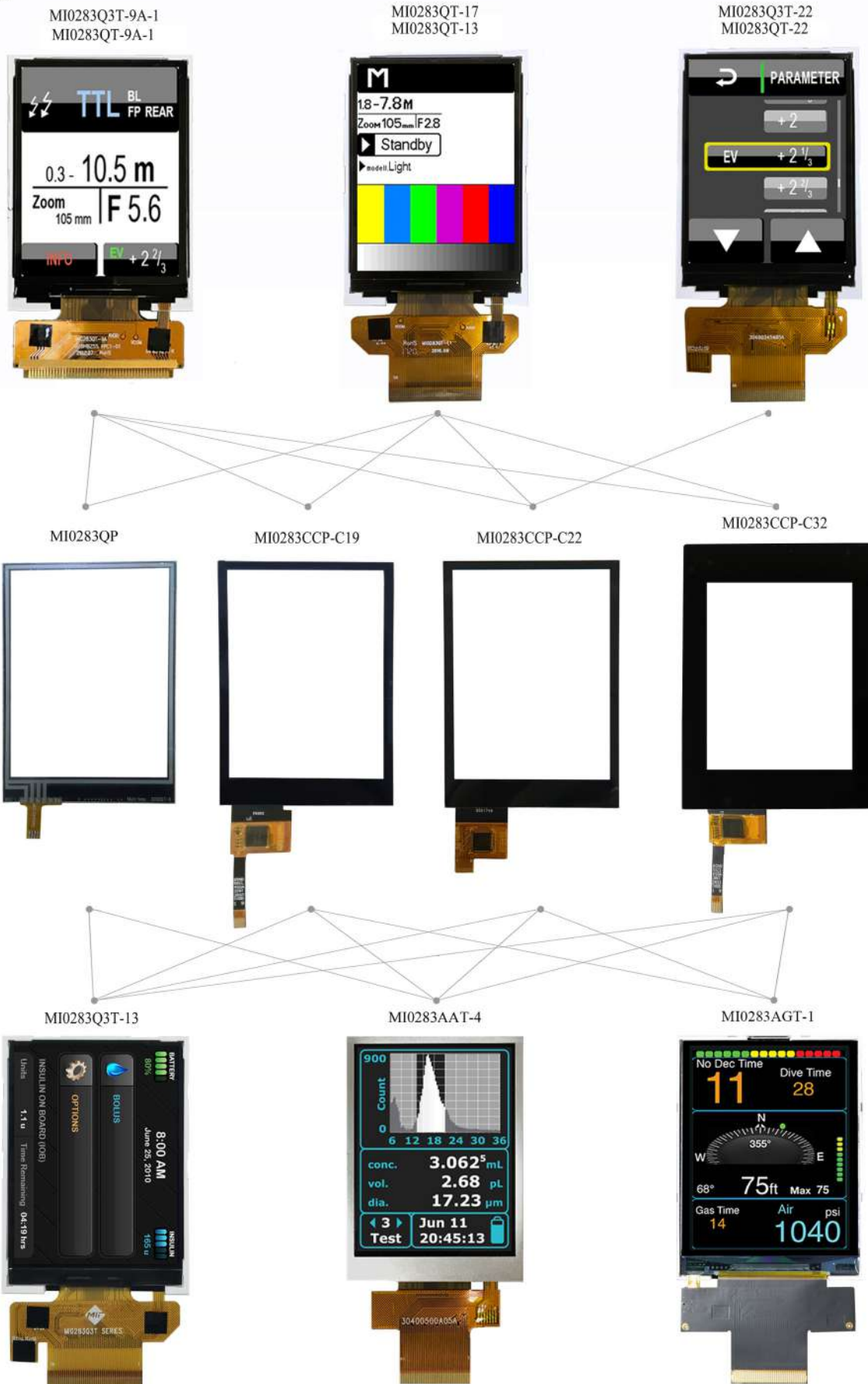
Controller	Size (inch)	Structure	Resolution	Outline size (mm)	VA area (mm)	AA area (mm)	Trans. %	Interface	FPC (selectable)	Color
FT5446-P03	2.83"	G+G	240x320	49.50x68.75x1.90	44.20x58.60	45.20x59.60	>85%	IIC	● ZIF connector ● Hot bar soldering	Black
				58.50x82.00x2.10	44.20x58.60	45.20x59.60	≥85%	IIC	● ZIF connector	Black

• Control Board List

P/N	Size (inch)	Resolution	Outline size (mm)	Top. (°C)	Tstor. (°C)	Controller	Interface	Remark
MI0283QT-CB	2.83"	240x320	50.20x69.30x1.00	-20-70	-30-80	FT801 for CTP FT800 for RTP	4-wire SPI	Intelligent Display Solutions: ♦Built-in LED inverter and FT8xx controller ♦Built-in touch controller ♦Fast development ♦Built-in graphic widgets ♦Product tested on massive scale ♦Standardized 20-pin connector for all sizes

2.83inch Products Family

• Photo Show





New Products Introduction

-Dec. 26th, 2017-

3.5inch TFT - MI0350ACT-5

P/N	MI0350ACT-5	Size (inch)	3.50
Resolution	480xRGBx640	Viewing Direction	9:00
A.A. (mm)	53.28x71.04	Outline Size (mm)	64.00x85.00x3.00
Contrast (Cr)	500	Brightness (nits)	525
Operating Temp.	-20°C~70°C	Storage Temp.	-30°C ~80°C
Interface	SPI + 18-bit RGB	Touch Panel (Selectable)	RTP



PIN DESCRIPTION			
PIN	SYMBOL	PIN	SYMBOL
1	GND	31	G02
2	NC	32	G03
3	NC	33	G04
4	NC	34	G05
5	NC	35	GND
6	GND	36	R00
7	NC	37	R01
8	NC	38	R02
9	GND	39	R03
10	NC	40	R04
11	NC	41	R05
12	NC	42	GND
13	NC	43	VDD
14	NC	44	NC
15	GND	45	GND
16	NC	46	DCLK
17	RESET	47	GND
18	NC	48	ENABLE
19	NC	49	GND
20	VCI	50	CS
21	GND	51	SDA
22	B00	52	NC
23	B01	53	SCL
24	B02	54	VSYNC
25	B03	55	HSYNC
26	B04	56	NC
27	B05	57	NC
28	GND	58	LED_K
29	G00	59	LED_A
30	G01	60	GND

NOTES:

1. DISPLAY TYPE: TFT, TRANSMISSIVE, NORMALLY WHITE
2. OPERATING VOLTAGE: VDD=3.3V (TYP.)
3. VIEWING DIRECTION: 9 O'CLOCK
4. DRIVER IC: HX8363-A03
5. OPERATING TEMP.: -20°C ~ 70°C
6. STORAGE TEMP.: -30°C ~ 80°C
7. LED BACKLIGHT: 6-CHIP WHITE LED, IF=20mA, VF=19.2V±1.2V
8. SURFACE LUMINANCE: 525CD/M² (TYP.)
9. TOP POLARIZER SURFACE TREATMENT: ANTI-GLARE
10. GENERAL TOLERANCE: ±0.2MM
11. ROHS COMPLIANT

LED CIRCUIT DIAGRAM

DETAIL A (SCALE 50:1)

MULTI-INNO TECHNOLOGY CO., LTD.

DRAWN BY: CAROL 2012.10.09 CHECKED BY: SCALE: 1/1 MODULE P/N: MI0350ACT-5

01 FIRST ISSUE CAROL 2012.10.09 APPROVED BY: UNIT: mm DESCRIPTION: TFT MODULE

VER. REVISED DESCRIPTION REVISER DATE VERSION NO: 02 SHEET NO.: 1/1

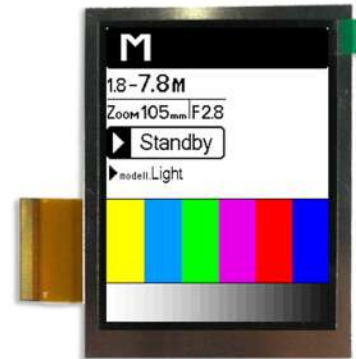


New Products Introduction

-Nov. 27th, 2017-

3.5inch TFT | Wide Temperature | Full Viewing Angle - MI0350AST-1

P/N	MI0350AST-1	Size (inch)	3.50
Resolution	240xRGBx320	Viewing Direction	Full viewing angle
A.A. (mm)	53.28x71.04	Outline Size (mm)	64.00x85.00x3.00
Contrast (Cr)	1000	Brightness (nits)	300
Operating Temp.	-20°C~85°C	Storage Temp.	-30°C~85°C
Interface	3-wire SPI+18-bit RGB		



DETAIL A (SCALE 40:1)

DETAIL B (SCALE 2:1)

PIN NO	SYMBOL
1	VLEDL
2	GND
3	VLEDK
4	GND
5	VDD
6	GND
7	GND
8	GND
9	VSTBY
10	GND
11	RESET
12	GND
13	GND
14	GND
15	CS
16	GND
17	SDD
18	SDI
19	GND
20	SCL
21	GND
22	SS
23	SH
24	SD
25	SD
26	BI
27	BS
28	FBAR
29	GND
30	HDVDD
31	GND
32	TRCLK
33	GND
34	CS
35	G4
36	CS
37	CS
38	G1
39	G2
40	GND
41	SD
42	SD
43	SD
44	SD
45	SD
46	SD
47	GND
48	GND
49	GND
50	GND

BACKLIGHT CIRCUIT DIAGRAM

NOTES:

1. DISPLAY TYPE: TFT/TRANSMISSIVE/NORMALLY BLACK
2. OPERATING VOLTAGE: VDD=3.3V
3. VIEWING DIRECTION: FULL VIEWING ANGLE
4. DRIVER IC: ST7789V
5. OPERATING TEMP.: -20°C ~ 85°C
6. STORAGE TEMP.: -30°C ~ 85°C
7. BACKLIGHT: 6-CHIP WHITE LED, IF=20mA, VF=19.2V±1.2V
8. SURFACE LUMINANCE: 300CD/M²(TYP.)
9. TREATMENT OF TOP SURFACE: ANTI-GLARE
10. GENERAL TOLERANCE: ±0.2mm
11. ROHS COMPLIANT

01	FIRST ISSUE	CAROL	2017.11.21
VER.	REVISED DESCRIPTION	REVISER	DATE

MULTI-INNO TECHNOLOGY CO., LTD. DRAWN BY: RITA 2017.11.21 CHECKED BY: APPROVED BY: VERSION NO: 01	MODULE P/N: MO350AST-1 SCALE: 1/1 UNIT: mm SHEET NO: 1/1	DESCRIPTION: TFT MODULE
--	--	----------------------------



New Products Introduction

-Jun. 14th, 2018-

3.5inch QVGA TFT | Super Wide Temperature Range | Full Viewing Angle - MI0350AUT-1

P/N	MI0350AUT-1	Size (inch)	3.50
Resolution	320xRGBx240	Viewing Direction	Full viewing angle
A.A. (mm)	70.08x52.56	Outline Size (mm)	76.90x63.90x3.20
Contrast (Cr)	800	Brightness (nits)	550
Operating Temp.	-30°C~85°C	Storage Temp.	-30°C~85°C
Interface	3-wire SPI+24-bit RGB	Touch Panel (Selectable)	RTP CTP



Technical drawing showing top, side, and detail views of the MI0350AUT-1 TFT module. Dimensions include: 76.9 (LUM O.D.), 72.8 (BEZEL OPENING), 71.08 (LCD V.A.), 70.08 (LCD A.A.), 38.45±0.5, 28.46±0.5, 4.0±0.5, 10.04±0.5, 3.7±0.5, 16.0±0.5, 39.9±0.5, 11.8±0.3, 30.4±0.3, 3.2±0.2, 0.5±0.1, 27.5±0.1, 0.219, 0.219, 0.54, P=0.50, W=0.35, P0.5*(54-1)=28.50±0.05.

PIN ASSIGNMENT			
1	LEDK	28	RO
2	LEDA	29	R1
3	LEDA	30	R2
4	LEDA	31	R3
5	NC	32	R4
6	NC	33	R5
7	NC	34	R6
8	RESET	35	R7
9	SPENA	36	HSYNC
10	SPCLK	37	VSYNC
11	SPDAT	38	DCLK
12	B0	39	NC
13	B1	40	NC
14	B2	41	VDD
15	B3	42	VDD
16	B4	43	NC
17	B5	44	NC
18	B6	45	NC
19	B7	46	NC
20	G0	47	NC
21	G1	48	NC
22	G2	49	NC
23	G3	50	NC
24	G4	51	NC
25	G5	52	DEN
26	G6	53	GN0
27	G7	54	GN0

LEDK ← [PINS 28-31] → LEDA

BACKLIGHT CIRCUIT DIAGRAM

NOTES:

- DISPLAY TYPE: TFT/TRANSMISSIVE/NORMALLY BLACK
- VIEWING DIRECTION: FULL VIEWING ANGLE
- OPERATING VOLTAGE: VDD=3.3V
- DRIVER IC: ST7272A
- OPERATING TEMP.: -30°C ~ 85°C
- STORAGE TEMP.: -30°C ~ 85°C
- BACKLIGHT: 6-DIP WHITE LED, IF=20mA, Vf=19.2V±1.2V
- SURFACE LUMINANCE: 5500/10" (STYP.)
- TOP POLARIZER SURFACE TREATMENT: ANTI-GLARE
- GENERAL TOLERANCE: ±0.2mm
- RoHS COMPLIANT

DETAIL A (SCALE 40:1)

R	G	B	R
R	G	B	R

03	CORRECT THE FIG. THERE ARE ALL DIMENSIONS ON THE FIG.	RITA	20180527
02	CORRECT THE DESIGN OF HIGH FRAME, ADDING HIGH FRAME GROOVES.	RITA	20180711
01	FIRST ISSUE	RITA	20180630
VER.	REVISED DESCRIPTION	REVISER	DATE

DRAWN BY:	RITA	20180530	SCALE : 1/1	MODULE P/N:	MI0350AUT-1
CHECKED BY:			UNIT: mm	DESCRIPTION:	TFT MODULE
APPROVED BY:					
VERSION NO:	03				



New Products Introduction

-Jul. 17th, 2019-

3.5inch Blanview TFT | Sunlight Readable | Full Viewing Angle - MI0350AYT-1

P/N	MI0350AYT-1	Size (inch)	3.50
Resolution	480xRGBx640	Viewing Direction	Full viewing angle
A.A. (mm)	53.28x71.04	Outline Size (mm)	64.00x85.00x3.00
Contrast (Cr)	500	Brightness (nits)	500
Operating Temp.	-20°C~70°C	Storage Temp.	-30°C~80°C
Interface	18-bit RGB		



Technical drawing showing dimensions for the MI0350AYT-1 display module. Key dimensions include: 64.0±0.3(LCM O.D.), 56.44(BEZEL OPENING), 54.28(LCD V.A.), 53.28(LCD A.A.), 3.5" TFT, 480XRGBX640, FULL VIEWING ANGLE, 71.04(LCD A.A.), 72.04(LCD V.A.), 74.32(BEZEL OPENING), 85.0±0.3(LCM O.D.), 3.0±0.2, 22.5±0.5, 5.0±0.3, 40.30, 19.37, 30.3, 15.3, 4.0±0.3, 0.5, 22.5±0.3, 54.5, 0.111, 0.037, 0.111, 0.30±0.05, 3.8±0.5, 20.5±0.1, 24.3±0.5. Labels include: REMOVE TAPE, PI STIFFENER, CONTACT SIDE, LED_A, LED_K, COMPONENT AREA T=2.0mm(MAX), TAPE, DETAIL A (SCALE 50:1).

NO.	SYMBOL	PIN ASSIGNMENT
1	DE	
2	GND	
3	GND	
4	GND	
5	NC	
6	RO	
7	R1	
8	R2	
9	R3	
10	R4	
11	R5	
12	G0	
13	G1	
14	G2	
15	G3	
16	C4	
17	G5	
18	B0	
19	B1	
20	B2	
21	B3	
22	B4	
23	B5	
24	SCL	
25	SDA	
26	/CS	
27	DOTCLK	
28	/RESET	
29	HSYNC	
30	VSYNC	
31	VCC	
32	VCC	
33	GND	
34	LED_A	
35	LED_K	
36	GND	
37	NC	
38	NC	
39	NC	
40	NC	

NOTES:

1. DISPLAY TYPE: TFT, BLANVIEW (SUNLIGHT READABLE), NORMALLY BLACK
2. VIEWING DIRECTION: FULL VIEWING ANGLE
3. OPERATING VOLTAGE: VCC=2.8V
4. DRIVER IC: ILI9806E-2
5. OPERATING TEMP.: -20°C ~ 70°C
6. STORAGE TEMP.: -30°C ~ 80°C
7. BACKLIGHT: 6-CHIPS WHITE LED, IF=20mA, Vf=19.2V±1.2V
8. SURFACE LUMINANCE: 500CD/M²(TYP.)
9. TOP POLARIZER SURFACE TREATMENT: ANTI-GLARE
10. GENERAL TOLERANCE: ±0.2MM
11. ROHS COMPLIANT

BACKLIGHT CIRCUIT DIAGRAM

DETAIL A (SCALE 50:1)

MULTI-INNO TECHNOLOGY CO., LTD.	
DRAWN BY: RITA 2018.09.12 CHECKED BY: APPROVED BY: VERSION NO: 02	MODULE P/N: MI0350AYT-1 SCALE: 1/1 UNIT: mm SHEET NO: 1/1 DESCRIPTION: TFT MODULE

02	CORRECT THE DISPLAY TYPE IN NOTES.	RITA	2019.05.31
01	FIRST ISSUE	RITA	2018.09.12
VER.	REVISED DESCRIPTION	REVISER	DATE

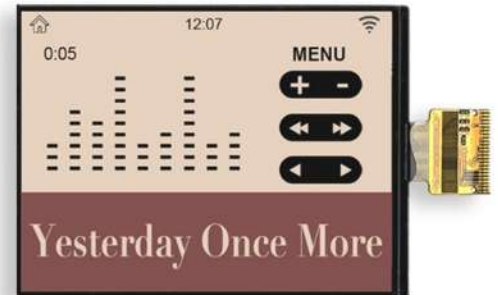


New Products Introduction

-Apr. 23rd, 2020-

4.2inch R/B/W TFT | Reflective Type | Ultra-low Power Consumption | Sunlight Readable

P/N	MI0420FT-1	Size (inch)	4.20
Display Mode	Reflective TFT	Viewing Direction	Free
Resolution	300 x 400	Display Color	Three colors (Black, White, Dark Red)
A.A. (mm)	63.60 x 84.80	Outline Size (mm)	67.60 x 91.00 x 1.10
Contrast (Cr)	15	Reflectance (%)	20
Operating Temp.	-20°C ~ 70°C	Storage Temp.	-30°C ~ 80°C
Interface	4-wire SPI	Driver IC	ST7306



Technical drawing details:
 - LCD Outline: 67.6±0.1 (width), 91.0±0.1 (height)
 - POL: 66.6, A.A.: 63.6
 - TFT: 4.2" (width), 300*400 DOTS (height)
 - Full Viewing Angle
 - Components: PULL TAPE, INSULATION TAPE, WHITE LINE, COMPOUND AREA, STIFFENER, CONTACT SIDE

PIN DESCRIPTION	
PIN	SYMBOL
1	NC
2	GND
3	NC
4	NC
5	NC
6	NC
7	NC
8	NC
9	NC
10	NC
11	NC
12	NC
13	NC
14	NC
15	NC
16	NC
17	NC
18	NC
19	NC
20	NC
21	NC
22	NC
23	NC
24	NC
25	NC
26	NC
27	NC
28	VDDA
29	VDDI
30	GND
31	CS
32	A0
33	RST
34	SCL
35	SDA
36	NC
37	NC
38	GND
39	NC
40	NC

NOTES:

1. DISPLAY TYPE: B/W/R TFT, REFLECTIVE, NORMALLY WHITE
2. OPERATING VOLTAGE: VDDI=2.8V (TYP.)
3. VIEWING DIRECTION: FULL VIEWING ANGLE
4. DRIVER IC: ST7306
5. OPERATING TEMP.: -20°C ~ 70°C
6. STORAGE TEMP.: -30°C ~ 80°C
7. TOP POLARIZER SURFACE TREATMENT: TBD
8. ONLY THE SINGLE LAYER AREA ON FPC IS BENDABLE AND THE MINIMUM BEND RADIUS IS 1.5MM
9. GENERAL TOLERANCE: ±0.3MM
10. ROHS COMPLIANT

MULTI-INNO TECHNOLOGY CO., LTD.

DRAWN BY: CAROL	2022.06.08	MODULE P/N: MI0420FT-1
CHECKED BY:		SCALE: 1/1
APPROVED BY:		UNIT: mm
REVISER: CAROL	2022.06.08	DATE: 01
VERSION NO: 01		SHEET NO: 1/1
DESCRIPTION: TFT MODULE		



New Products Introduction

-Jun. 12th, 2018-

5.7inch VGA TFT | Lower Cost | Higher Quality - MI0570E2T-1

P/N	MI0570E2T-1	Size (inch)	5.70
Resolution	640xRGBx480	Viewing Direction	6:00
A.A. (mm)	115.20x86.40	Outline Size (mm)	127.00x98.43x5.80
Contrast (Cr)	300	Brightness (nits)	700
Operating Temp.	-20°C~70°C	Storage Temp.	-30°C~80°C
Interface	18-bit RGB	Touch Panel (Selectable)	RTP CTP



127.0(LCM O.D.)
118.16(BEZEL OPENING)
116.2(LCD V.A.)
115.2(LCD A.A.)
5.89
7.06
7.56
85.16
7.6(MAX.)
5.80±0.2
36.4(LCM O.D.)
2.95
89.2(BEZEL OPENING)
87.4(LCD V.A.)
86.4(LCD A.A.)
47.05
5.7" TFT
640XRGBX480
VIEWING DIRECTION
REMOVE TAPE
FRONT
BACK

PIN NO	SYMBOL	ASSIGNMENT
1	U/G	U/G
2	NC	NC
3	HSYMC	HSYMC
4	VLED	VLED
5	VLED	VLED
6	VLED	VLED
7	VCC	VCC
8	VS1NC	VS1NC
9	DE	DE
10	NC	NC
11	NC	NC
12	ADJ	ADJ
13	B5	B5
14	B4	B4
15	B3	B3
16	VSS	VSS
17	B2	B2
18	B1	B1
19	B0	B0
20	VSS	VSS
21	G5	G5
22	G4	G4
23	G3	G3
24	VSS	VSS
25	G2	G2
26	G1	G1
27	G0	G0
28	VSS	VSS
29	R5	R5
30	R4	R4
31	R3	R3
32	VSS	VSS
33	R2	R2
34	R1	R1
35	R0	R0
36	NC	NC
37	NC	NC
38	FSCLK	FSCLK
39	VSS	VSS
40	L/R	L/R

LEDK7
LEDK6
LEDK5
LEDK4
LEDK3
LEDK2
LEDK1

LEDK7
LEDK6
LEDK5
LEDK4
LEDK3
LEDK2
LEDK1

DETAIL A (SCALE 40:1)

BACKLIGHT CIRCUIT DIAGRAM

NOTES:

1. DISPLAY TYPE: TFT/TRANSMISSIVE/NORMALLY WHITE
2. OPERATING VOLTAGE: VCC=3.3V, VLED=5.0V
3. VIEWING DIRECTION: 6:00 O'CLOCK
4. DRIVER IC: HXB250-A01+HX8678A
5. OPERATING TEMP.: -20°C ~ 70°C
6. STORAGE TEMP.: -30°C ~ 80°C
7. BACKLIGHT: 21-CHIP WHITE LED, IF=140mA, VF=8.4V~10.2V
8. SURFACE LUMINANCE: 700CD/M²(TYP.)
9. TOP POLARIZER SURFACE TREATMENT: GLARE
10. GENERAL TOLERANCE: ±0.2mm
11. ROHS COMPLIANT

MULTI-INNO TECHNOLOGY CO., LTD.	
DRAWN BY: RITA	2018.01.08
CHECKED BY:	
APPROVED BY:	
VERSION NO: 02	

SCALE : 1/1	MODULE P/N: MI0570E2T-1
UNIT: mm	DESCRIPTION: TFT MODULE

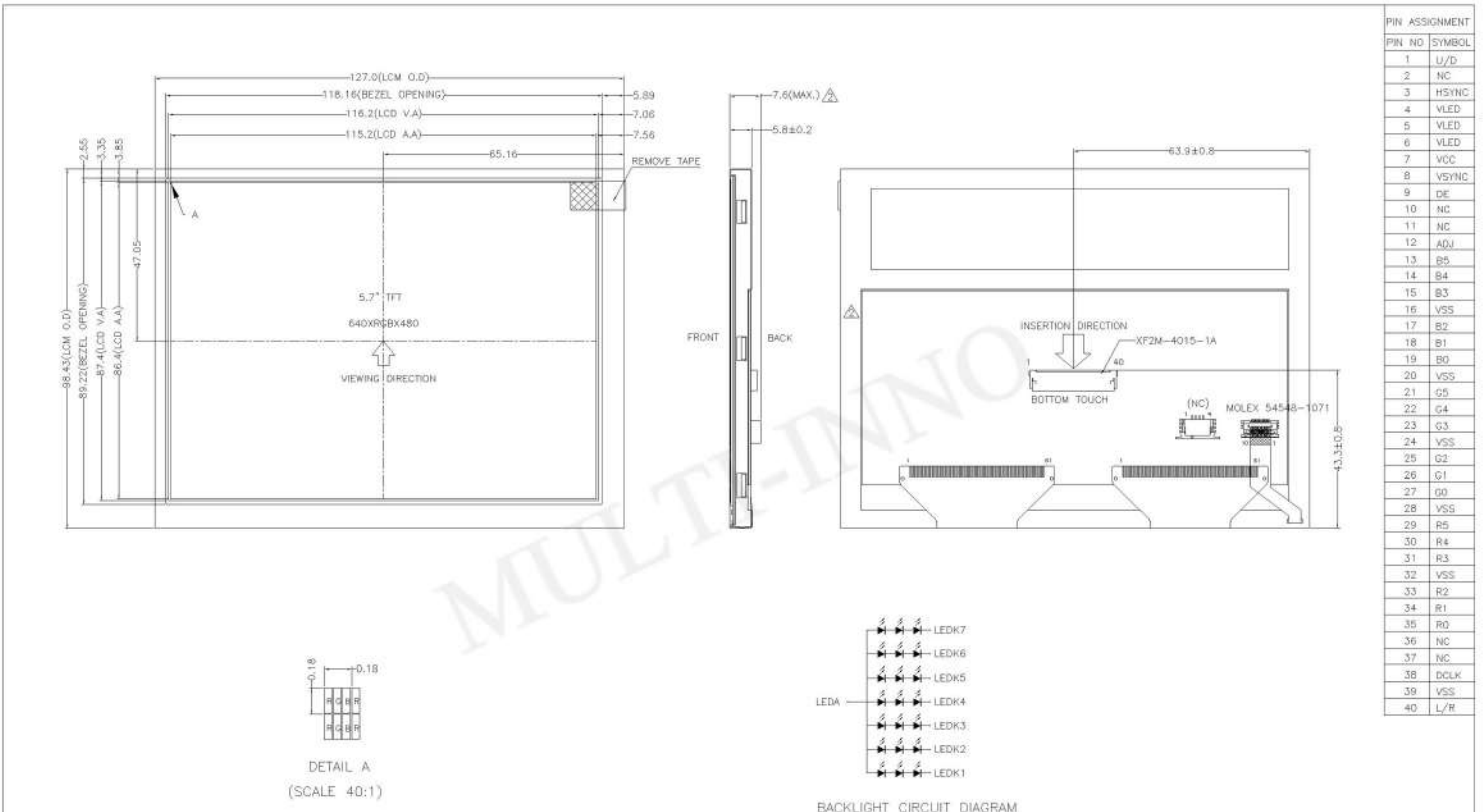


New Products Introduction

-Jun. 12th, 2018-

5.7inch VGA TFT | Lower Cost | Higher Quality | High Brightness - MI0570E2T-2

P/N	MI0570E2T-2	Size (inch)	5.70
Resolution	640xRGBx480	Viewing Direction	6:00
A.A. (mm)	115.20x86.40	Outline Size (mm)	127.00x98.43x5.80
Contrast (Cr)	300	Brightness (nits)	1000
Operating Temp.	-20°C~70°C	Storage Temp.	-30°C~80°C
Interface	18-bit RGB	Touch Panel (Selectable)	RTP CTP



- NOTES:
1. DISPLAY TYPE: TFT/TRANSMISSIVE/NORMALLY WHITE.
 2. OPERATING VOLTAGE: VCC=3.3V, VLED=5.0V.
 3. VIEWING DIRECTION: 6:00 O'CLOCK.
 4. DRIVER IC: HX8250-A01+HX8678A.
 5. OPERATING TEMP.: -20~70.
 6. STORAGE TEMP.: -30~80.
 7. BACKLIGHT: 21-CHIP WHITE LED, IF=155mA, VF=8.2V.
 8. SURFACE LUMINANCE: 1000CD/M²(TYP.).
 9. TOP POLARIZER SURFACE TREATMENT: GLARE.
 10. GENERAL TOLERANCE: ±0.2mm.
 11. ROHS COMPLIANT.

MULTI-INNO TECHNOLOGY CO., LTD.

DRAWN BY: RITA 2018.06.22 SCALE: 1/1 MODULE P/N: MI0570E2T-2

CHECKED BY: UNIT: mm

APPROVED BY: DESCRIPTION: TFT MODULE

VERSION NO: 01

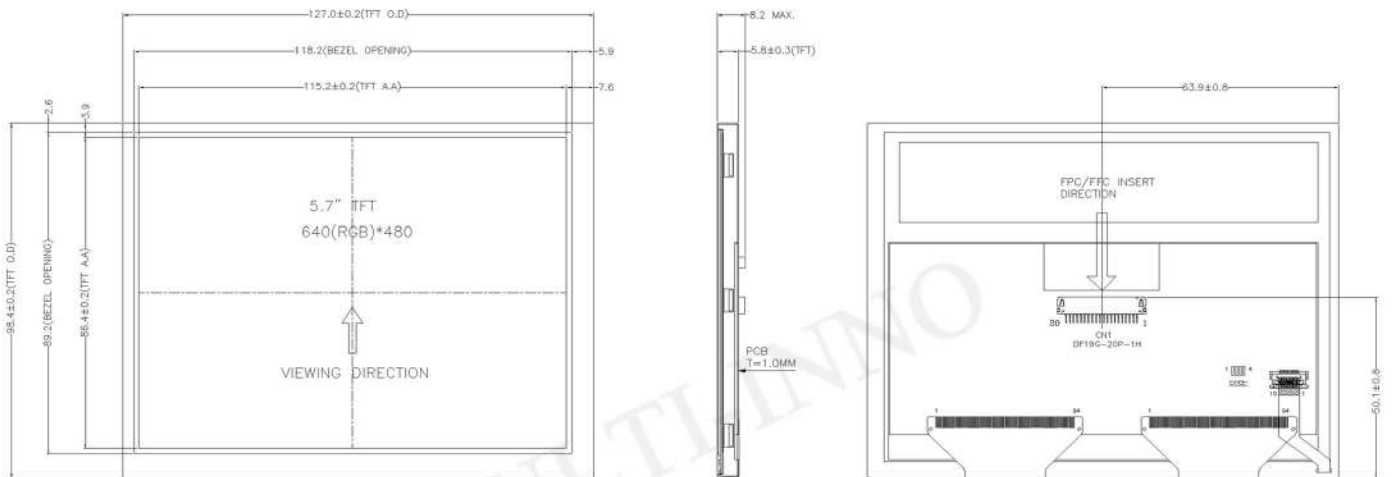


New Products Introduction

-Apr. 8th, 2019-

5.7inch TFT | High Brightness - MI0570ET-29

P/N	MI0570ET-29	Size (inch)	5.70
Resolution	640xRGBx480	Viewing Direction	6:00
A.A. (mm)	115.20x86.40	Outline Size (mm)	127.00x98.40x8.20 (With PCBA)
Contrast (Cr)	300	Brightness (nits)	1000
Operating Temp.	-20°C~70°C	Storage Temp.	-30°C~80°C
Interface	3-lane LVDS	Touch Panel (Selectable)	RTP CTP



NOTES FOR TFT:

1. DISPLAY TYPE: TFT, TRANSMISSIVE, NORMALLY WHITE.
2. VIEWING DIRECTION: 6 O'CLOCK.
3. OPERATING VOLTAGE: VDD=3.3V, VBL=5.0V.
4. IC DRIVER: HIMAX.
5. OPERATING TEMP: -20°C ~ 70°C.
6. STORAGE TEMP: -30°C ~ 80°C.
7. SURFACE LUMINANCE: 1000 cd/m² (TYP).
8. LED BACKLIGHT: 21-CHIP WHITE LED, If=155mA, Vf=9.6±0.9V.
9. TOP POLARIZER SURFACE TREATMENT: GLARE.
10. GENERAL TOLERANCE: ±0.3MM.
11. ROHS COMPLIANT.



LED CIRCUIT DIAGRAM

CN1 PIN DESCRIPTION

PIN NO	SYMBOL	PIN NO	SYMBOL
1	VDD	11	IN2-
2	VDD	12	IN2+
3	VSS	13	VSS
4	VSS	14	CLK-
5	IN0-	15	CLK+
6	IN0+	16	VSS
7	VSS	17	BL_ADJ
8	IN1-	18	VBL
9	IN1+	19	VSS
10	VSS	20	VSS



MULTI-INNO TECHNOLOGY CO.,LTD.

DRAWN BY:	VICTOR	2018.03.28	SCALE : 1/1	MODULE P/N:	MI0570ET-29
CHECKED BY:			UNIT:	mm	DESCRIPTION:
APPROVED BY:					TFT MODULE
VERSION NO:	01				

01	FIRST ISSUE	VICTOR	2018.03.28
VER.	REVISED DESCRIPTION	REVISER	DATE



New Products Introduction

-Sept. 14th, 2017-

6.2inch TFT - MI0620DT-1

P/N	MI0620DT-1	Size (inch)	6.20
Resolution	800xRGBx480	Viewing Direction	12:00
A.A. (mm)	137.52x77.23	Outline Size (mm)	155.20x88.20x5.00
Contrast (Cr)	600	Brightness (nits)	300
Operating Temp.	-20°C~70°C	Storage Temp.	-30°C~80°C
Interface	24-bit RGB	Touch Panel (Selectable)	RTP



PIN ASSIGNMENT			
NO.	SYMBOL	NO.	SYMBOL
1	AGND	31	VSD
2	AVDD	32	MODE
3	DVDD	33	RSTB
4	R0	34	STBYB
5	R1	35	SHLR
6	R2	36	DVDD
7	R3	37	UPDN
8	R4	38	GND
9	R5	39	AGND
10	R6	40	AVDD
11	R7	41	VCOM
12	G0	42	DITH
13	G1	43	NC
14	G2	44	NC
15	G3	45	V10
16	G4	46	V9
17	G5	47	V8
18	G6	48	V7
19	G7	49	V6
20	B0	50	V5
21	B1	51	V4
22	B2	52	V3
23	B3	53	V2
24	B4	54	V1
25	B5	55	NC
26	B6	56	VDDG
27	B7	57	DVDD
28	DCLK	58	VEEG
29	DE	59	GND
30	HSD	60	NC

NOTES:

- DISPLAY TYPE: TFT/TRANSMISSIVE/NORMALLY WHITE
- VIEWING DIRECTION: 12 O'CLOCK
- OPERATING VOLTAGE: DVDD=3.3V
- DRIVER IC: ILI6123H+ILI6480
- OPERATING TEMP.: 20°C ~ 70°C
- STORAGE TEMP.: -30°C ~ 80°C
- BACKLIGHT: 18-CHIP WHITE LED, IF=120mA, Vf=8.4V~10.2V
- SURFACE LUMINANCE: 300CD/M²
- POLARIZER SURFACE TREATMENT: ANTI-GLARE
- GENERAL TOLERANCE: ±0.2mm
- ROHS COMPLIANT

04	CORRECT THE CENTER FROM 48.0mm TO 48.2mm. ADD THE P/N IN THE CONNECTOR.	REDA	2017.11.23
03	CORRECT THE VIEWING DIRECTION FROM 0 O'CLOCK TO 12 O'CLOCK. CORRECT THE SURFACE LUMINANCE FROM 300 TO 480.	REDA	2017.11.15
02	UPDATE THE SURFACE LUMINANCE	REDA	2017.05.02
01	FIRST ISSUE	REDA	2017.03.30

		MULTI-INNO TECHNOLOGY CO., LTD.	
DRAWN BY:	UNIT: mm	SCALE: 1/1	MODULE P/N:
CHECKED BY:	mm		MI0620DT-1
APPROVED BY:			DESCRIPTION:
VERSION NO:			TFT MODULE



New Products Introduction

-Feb. 27th, 2020-

7.0inch IPS TFT | Super Wide Temperature Range | High Brightness | Full Viewing Angle - MI0700BUT-1

P/N	MI0700BUT-1	Size (inch)	7.00
Resolution	800xRGBx480	Viewing Direction	Full viewing angle
A.A. (mm)	152.40x91.44	Outline Size (mm)	166.60x105.80x7.50
Contrast (Cr)	1000	Brightness (nits)	1000
Operating Temp.	-30°C~85°C	Storage Temp.	-40°C~95°C
Interface	3-wire SPI + 24-bit RGB	Touch Panel (Selectable)	RTP CTP



7.0" TFT
800(H)RGBX480(V)
FULL VIEWING ANGLE

DETAIL PIXEL SCALE 200:1

DETAIL A SCALE 2:1

LED CIRCUIT DIAGRAM

```

        LEDA --- 6-6-6-6-6-6 --- LEDK1
              6-6-6-6-6-6 --- LEDK2
              6-6-6-6-6-6 --- LEDK3

        IF=90°±3=270 MA
        VF=TYP, 18V

        NTC1 --- [ ] --- NTC2
    
```

TFT PIN DESCRIPTION			
PIN	SYMBOL	PIN	SYMBOL
1	NTC1	26	G4
2	LEDK1	27	G3
3	LEDK2	28	G2
4	LEDK3	29	G1
5	NTC2	30	G0
6	LEDA	31	GND
7	LEDA	32	R7
8	NC	33	R6
9	DVDD	34	R5
10	DE	35	R4
11	GND	36	R3
12	DCLK	37	R2
13	GND	38	R1
14	B7	39	RO
15	B6	40	GND
16	B5	41	STBYB
17	B4	42	LR
18	B3	43	UD
19	B2	44	RESET
20	B1	45	GND(AG_GND)
21	B0	46	SDA
22	GND	47	SCL
23	G7	48	CSB
24	G6	49	NC(VDDOTP)
25	G5	50	ATREN

NOTES:

1. DISPLAY TYPE: IPS TFT, TRANSMISSIVE, NORMALLY BLACK.
2. OPERATING VOLTAGE: DVDD=3.3V.
3. VIEWING DIRECTION: FULL VIEWING ANGLE.
4. DRIVER IC: HX8290-A*1 + HX8664-B*1.
5. OPERATING TEMP.: -30°C ~ 85°C.
6. STORAGE TEMP.: -40°C ~ 95°C.
7. LED BACKLIGHT: 18-CHIP WHITE LED, IF=270mA, VF=18V.
8. SURFACE LUMINANCE: 1000CD/M²(TYP.).
9. TOP POLARIZER SURFACE TREATMENT: ANTI-GLARE.
10. CONNECTOR: FH28D-50S-0.5SH (HROSE).
11. GENERAL TOLERANCE: ±0.3.
12. ROHS COMPLIANT.

MULTI-INNO TECHNOLOGY CO., LTD.

DRAWN BY: CAROL	2020.01.16	SCALE: 1/1	MODULE P/N: MI0700BUT-1
CHECKED BY:		UNIT: mm	DESCRIPTION: TFT MODULE
APPROVED BY:		SHEET NO.: 1/1	
VERSION NO: 01			

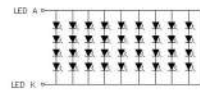
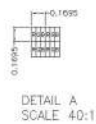
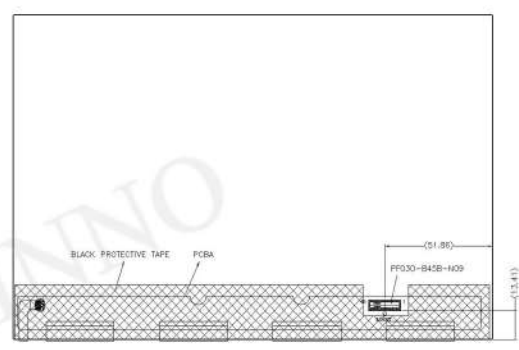
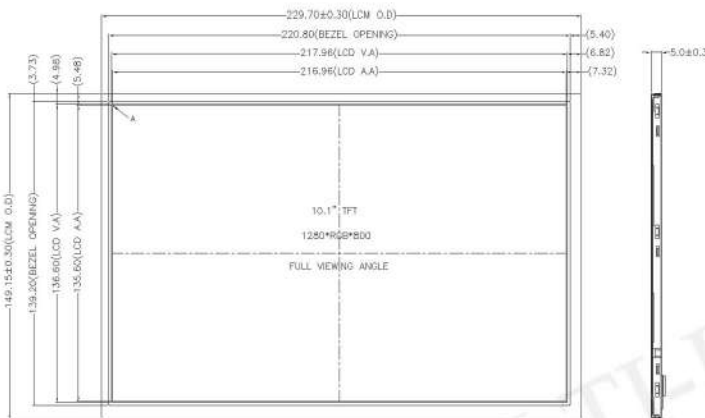


New Products Introduction

-Sept. 14th, 2017-

10.1inch IPS TFT | Full Viewing Angle - MI1010AAT-2

P/N	MI1010AAT-2	Size (inch)	10.10
Resolution	1280xRGBx800	Viewing Direction	Full viewing angle
A.A. (mm)	216.96x135.60	Outline Size (mm)	229.70x149.15x5.00
Contrast (Cr)	900	Brightness (nits)	1000
Operating Temp.	-20°C~70°C	Storage Temp.	-30°C~80°C
Interface	4-lane LVDS	Touch Panel (Selectable)	RTP CTP



PIN ASSIGNMENT FOR LCM:

NO.	SYMBOL
1	GND1
2	ID_CHK
3	NC
4	VDD(3.3V)
5	VDD(3.3V)
6	VDD(3.3V)
7	VDD(3.3V)
8	VDD(3.3V)
9	WPN
10	SCL
11	SDA
12	GND2
13	GND3
14	GND4
15	RXIN3N
16	RXIN3P
17	GND5
18	LVDS_RX_LN
19	LVDS_RX_P
20	GND6
21	RXIN2N
22	RXIN2P
23	GND7
24	RXIN1N
25	RXIN1P
26	GND8
27	RXIN0N
28	RXIN0P
29	GND9
30	GND10
31	NC
32	LEDK
33	LEDA
34	LEDA
35	LEDA
36	NC
37	NC
38	NC
39	LEDA
40	LEDA
41	LEDA
42	LEDA
43	LEDA
44	NC
45	GND11

- NOTES:
1. DISPLAY TYPE: TFT, TRANSMISSIVE, NORMALLY BLACK.
 2. OPERATING VOLTAGE: VDD=3.3V.
 3. VIEWING DIRECTION: FULL VIEWING ANGLE.
 4. IC DRIVER: HX8245 + HX8695.
 5. OPERATING TEMP.: -20°C ~ 70°C.
 6. STORAGE TEMP.: -30°C ~ 80°C.
 7. BACKLIGHT: 36-CHIP WHITE LED, If=360mA, Vf=10.8V~13.6V.
 8. SURFACE LUMINANCE: 1000CD/M²(TYP).
 9. TOP POLARIZER SURFACE TREATMENT: TBD.
 10. GENERAL TOLERANCE: ±0.2.
 11. ROHS COMPLIANT.

MULTI-INNO TECHNOLOGY CO., LTD.		DRAWN BY: RITA 2017.07.14		MODULE P/N: MI1010AAT-2	
03	CHANGE THE OPERATING TEMP. FROM -20°C ~ 70°C TO -30°C ~ 80°C.	RITA	2019.05.09	CHECKED BY:	SCALE: 1/1
02	CHANGE THE IC DRIVER FROM HX8245+HX8695 TO HX8695+HX8245.	RITA	2018.10.31	APPROVED BY:	UNIT: mm
01	FIRST ISSUE.	RITA	2017.07.14	VERSION NO: 03	SHEET NO: 1/1
VER.	REVISED DESCRIPTION	REVISED	DATE	DESCRIPTION:	TFT MODULE



New Products Introduction

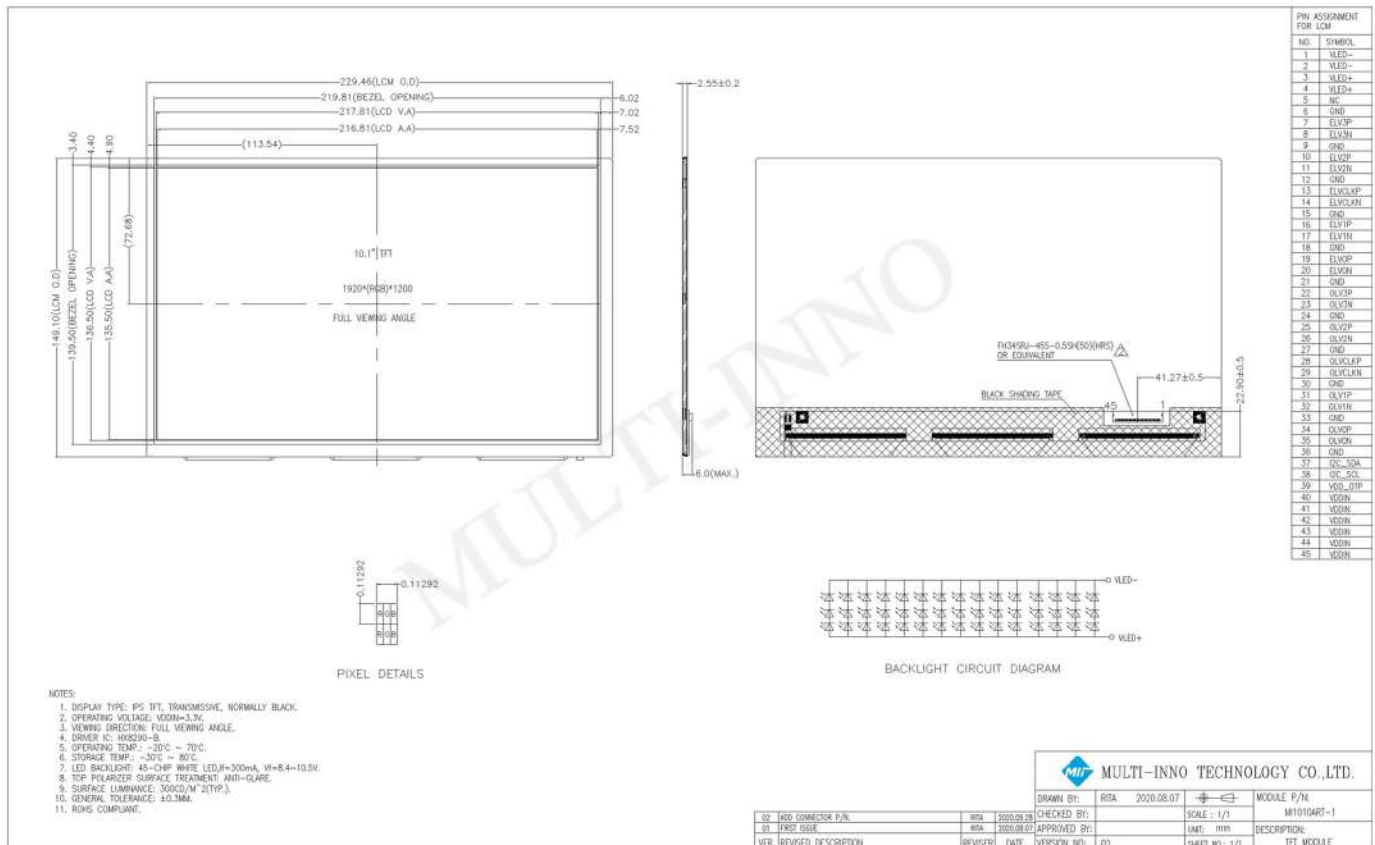
-Jan. 15th, 2021-

10.1inch IPS TFT | Ultra-thin | Ultra-high-definition

P/N	MI1010ART-1	Size (inch)	10.1
Resolution	1920 x RGB x 1200	Viewing Direction	Full viewing angle
A.A. (mm)	216.81 x 135.50	Outline Size (mm)	229.46 x 149.10 x 2.55
Contrast (Cr)	900	Brightness (nits)	300
Operating Temp.	-20°C ~ 70°C	Storage Temp.	-30°C ~ 80°C
Interface	2 channels, 4-lane LVDS	Touch Panel (Selectable)	RTP CTP

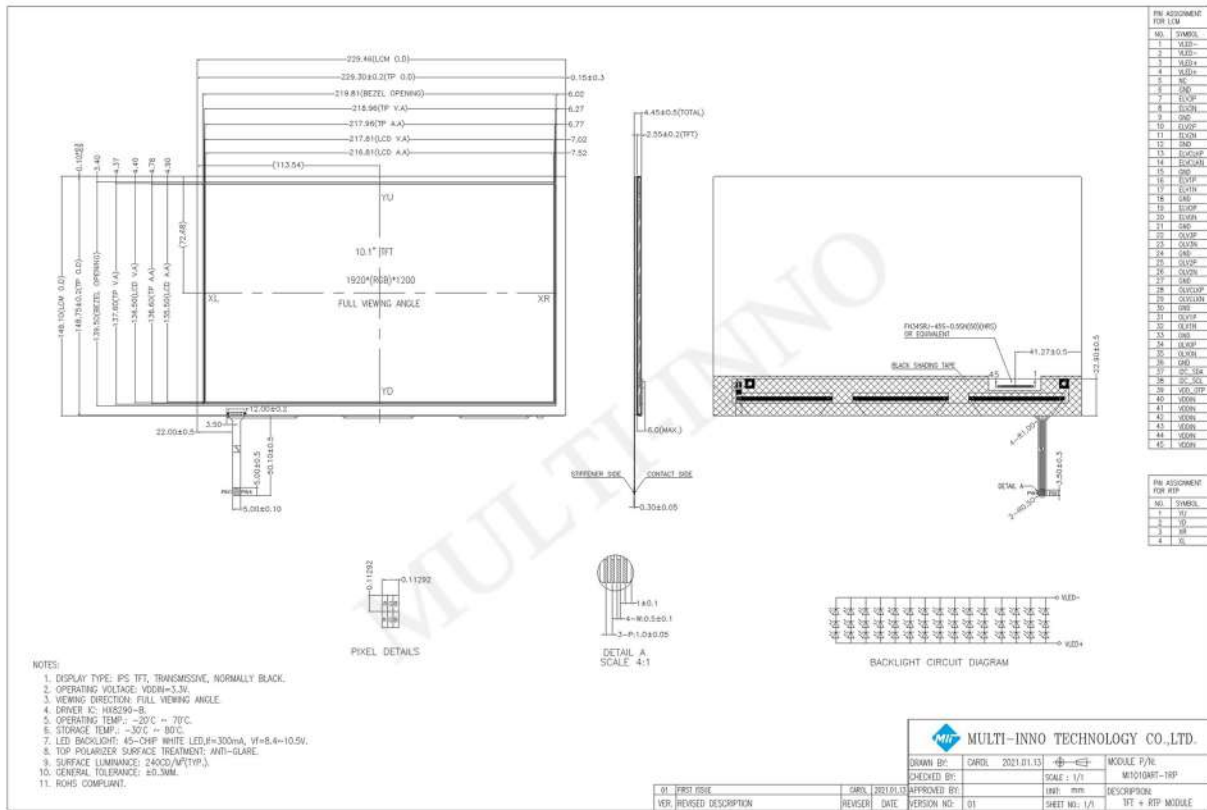


* Without RTP/CTP Outline Drawing

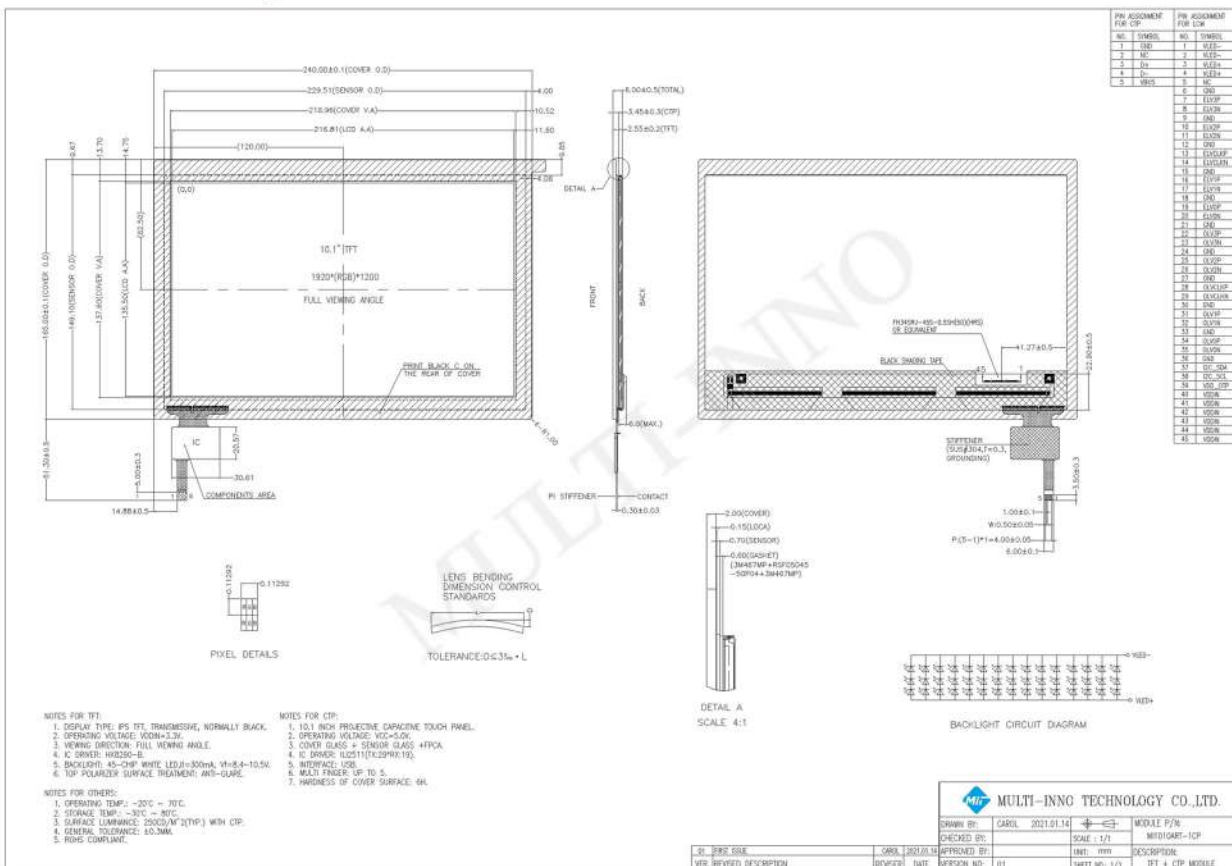


10.1inch IPS TFT | Ultra-thin | Ultra-high-definition

* With RTP Outline Drawing



* With CTP Outline Drawing





New Products Introduction

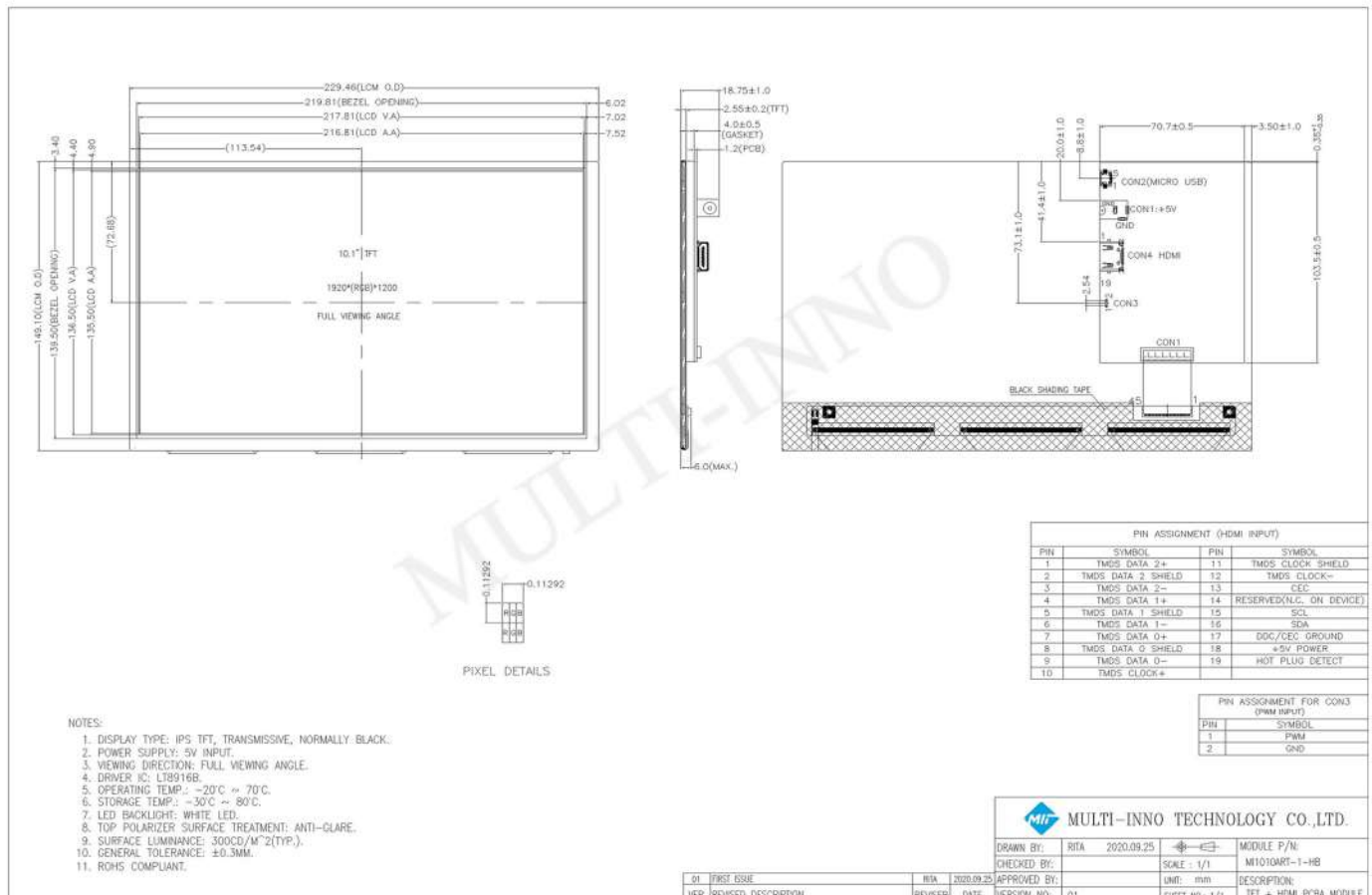
-Jan. 15th, 2021-

10.1inch IPS TFT | Ultra-thin | Ultra-high-definition | HDMI Function Board

P/N	MI1010ART-1-HB	Size (inch)	10.1
Resolution	1920 x RGB x 1200	Viewing Direction	Full viewing angle
A.A. (mm)	216.81 x 135.50	Outline Size (mm)	229.46 x 149.10 x 18.75
Contrast (Cr)	900	Brightness (nits)	300
Operating Temp.	-20°C ~ 70°C	Storage Temp.	-30°C ~ 80°C
Interface	HDMI (for display signal input)	Touch Panel (Selectable)	CTP

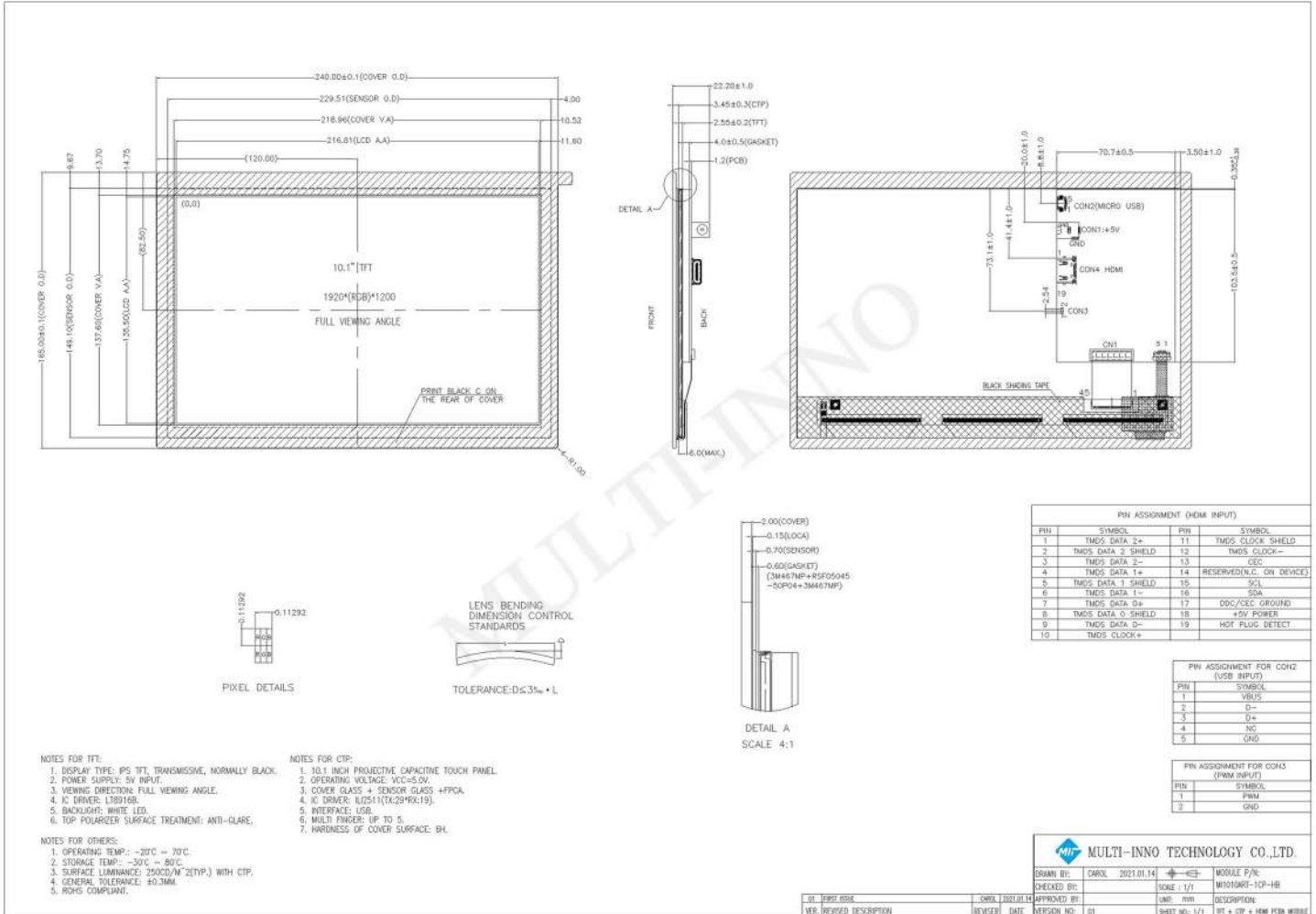


* Without CTP Outline Drawing



10.1inch IPS TFT | Ultra-thin | Ultra-high-definition | HDMI Function Board

* With CTP Outline Drawing





Bar Type TFT Display - Ultra-stretched LCD Panels

7.84", 8.8" and 10.25"



Item	Contents	
LCD Type	Bar TFT / Trasmisive / Normally black	
Size	7.84" / 8.8" / 10.25"	
Viewing Direction	Full viewing angle	
Color Depth	16.7M	
Input Voltage	3.3V	
Interface Type	7.84"	MIPI / LVDS
	8.8"	MIPI
	10.25"	LVDS
Brightness	7.84"	950cd/m ² (Typ.)
	8.8" / 10.25"	600cd/m ² (Typ.)
Operating Temperature Range	7.84" / 8.8"	-20°C ~ +70°C
	10.25"	-30°C ~ +85°C
Storage Temperature Range	7.84" / 8.8"	-30°C ~ +80°C
	10.25"	-30°C ~ +85°C



FTDI Function Board

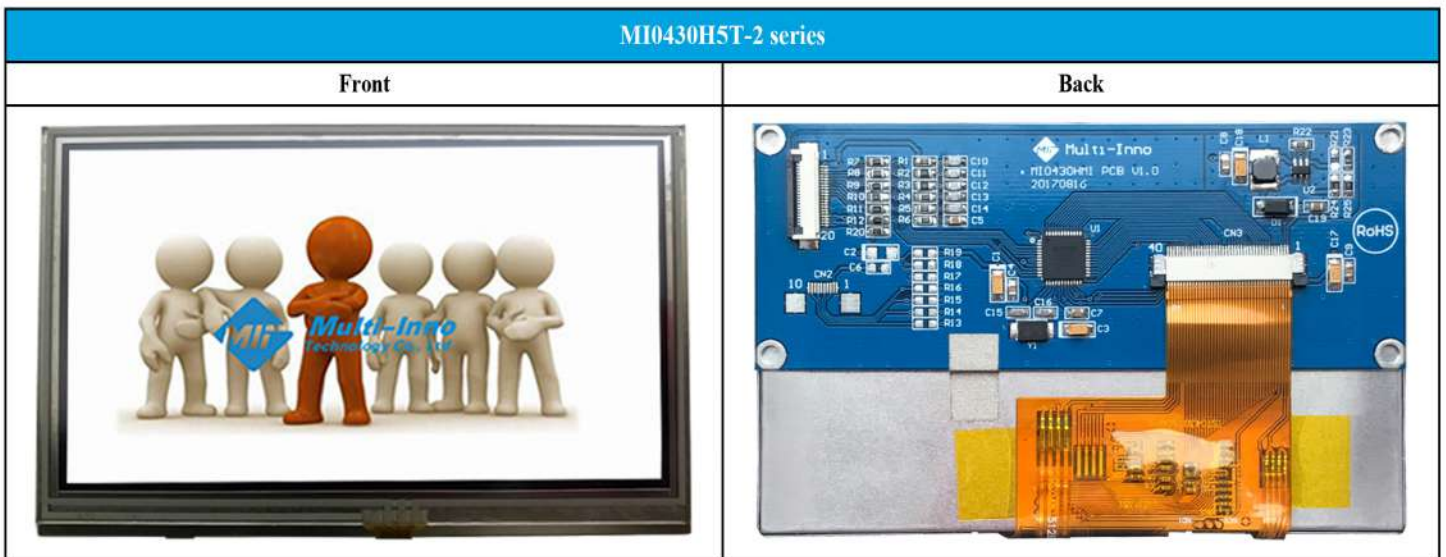
- * Built-in FTDI EVE video controllers(FT8x0/FT8x1);
- * Standard serial interface;
- * Functionality includes graphic controller, audio processing, and TP controller interface;
- * Built-in constant current backlight driver;
- * 3.3V single power supply.



• Availability

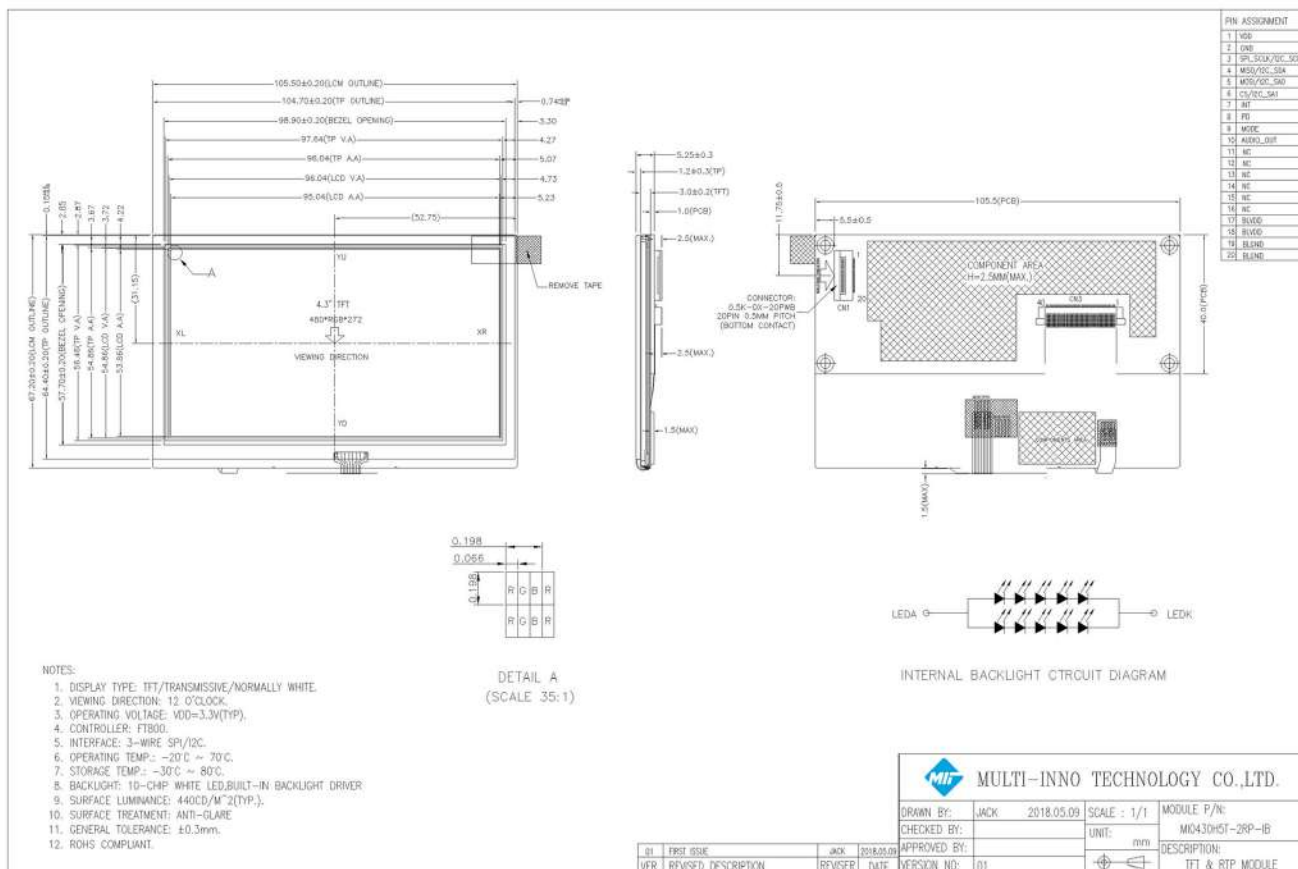
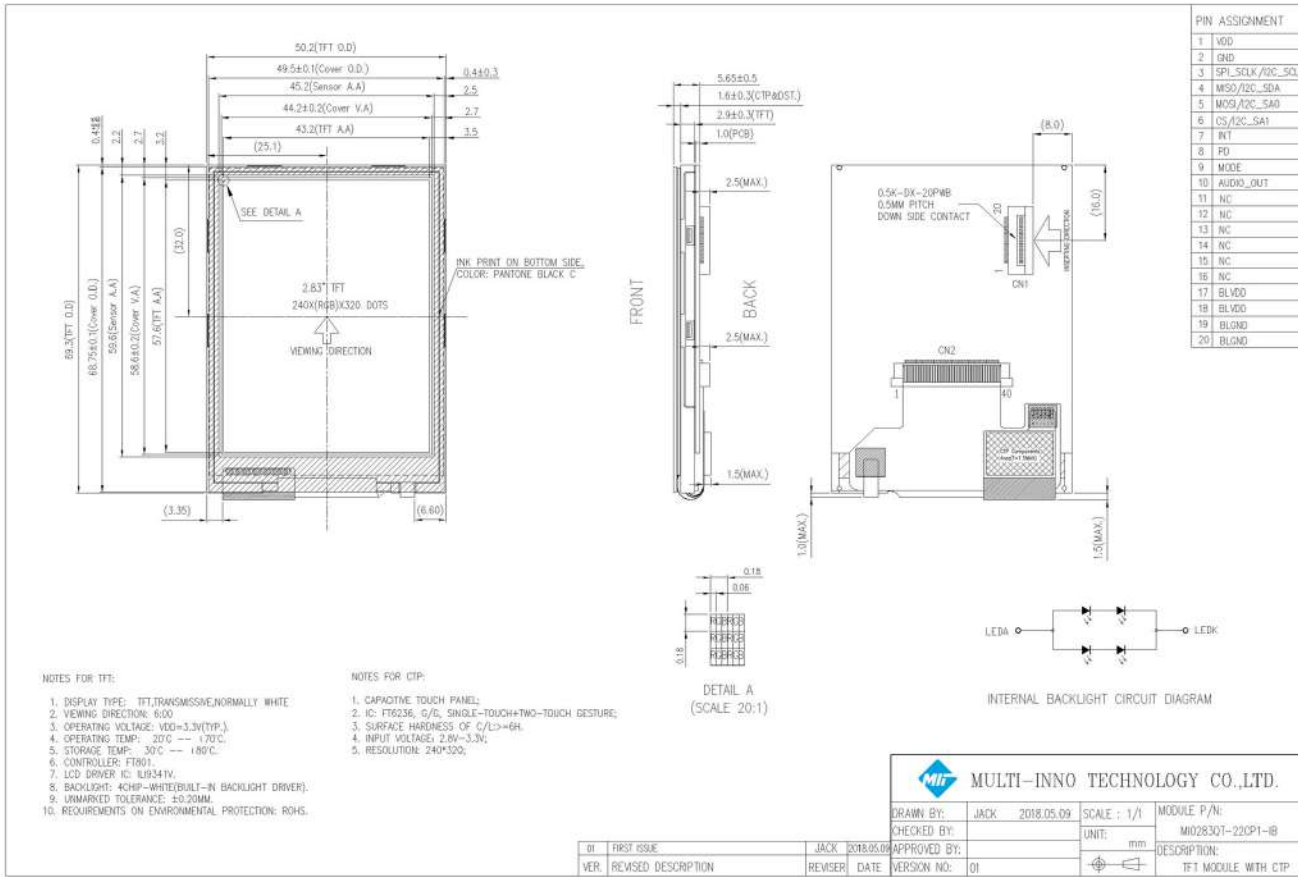
Controller	Size Inch	P/N	Resolution	A.A. (mm)	Outline Size (mm)	Contrast (Cr)	Brightness (nits)	Top. (°C)	Tstor. (°C)	Interface	TP (Selectable)	Viewing Direction
FTDI (FT8x1 for CTP) (FT8x0 for RTP)	2.83	MI0283QT-22 series	240xRGBx320	43.20x57.60	50.20x69.30x5.65	500	250	-20-70	-30-80	CPU, RGB, SPI	<ul style="list-style-type: none"> • RTP • CTP 	6:00
	4.30	MI0430H5T-2 series	480xRGBx272	95.04x53.86	105.50x67.20x4.30	500	440	-20-70	-30-80	24-bit RGB	<ul style="list-style-type: none"> • RTP • CTP 	12:00
	3.50	Under development										
	5.00											
	5.70											
	7.00											

• Photo Show



FTDI Function Board

• Design Example





SSD1963 Function Board

- * Built-in SSD1963 controller;
- * Support up to 864 x 480 x 24bit graphics content;
- * 8/9/16-bit MCU interface;
- * Built-in constant current backlight driver;
- * 3.3V single power supply.



• Availability

Controller	Size Inch	P/N	Resolution	A.A. (mm)	Outline Size (mm)	Contrast (Cr)	Brightness (nits)	Top. (°C)	T.stor. (°C)	Interface	TP (Selectable)	Viewing Direction
SSD1963	4.30	MI0430AHT-1 series	480xRGBx272	95.04x53.86	105.50x67.20x5.92	800	550	-20-70	-30-80	8-/16-bit CPU	● RTP ● CTP	Free
		MI0430L1T-1 series	480xRGBx272	90.04x53.86	105.50x67.20x4.00	500	450	-20-70	-30-80	8-/16-bit CPU	● RTP ● CTP	6:00
		MI0430L1T-5 series	480xRGBx272	95.04x53.86	105.50x67.20x4.30	500	550	-20-70	-30-80	8-/16-bit CPU	● RTP ● CTP	12:00
	5.00	MI0500PT series	800xRGBx480	108.00x64.80	120.70x75.80x2.90	500	600	-20-70	-30-80	8-/16-bit CPU	● RTP ● CTP	12:00
	7.00	MI0700YT-9 series	800xRGBx480	152.40x91.44	165.00x104.54x5.20	400	460	-20-70	-30-80	8-bit CPU	● RTP	12:00
	5.70	In development										

• Photo Show

4.3inch 480xRGBx272

Front

Back



SSD1963 Function Board

• Design Example

NOTES:

1. DISPLAY TYPE: TN TFT
2. VIEWING DIRECTION: 6:00 O'CLOCK
3. POLARIZER MODE: TRANSMISSIVE/POSITIVE
4. VCC=3.3V(TYP)
5. OPERATING TEMP: -20°C -- +70°C
6. STORAGE TEMP: -30°C -- +80°C
7. LCD CONTROLLER: SSD1963
8. INTERFACE: 16-BIT 8080 MPU
9. BACKLIGHT: WHITE LED
10. UNMARKED TOLERANCE: ±0.30mm
11. REQUIREMENTS ON ENVIRONMENTAL PROTECTION: RoHS

Table 1: Pin List

Pin No.	Symbol
1	GN0
2	VCC
3	BL+V
4	RS
5	WR
6	RST
7	DB0
8	DB1
9	DB2
10	DB3
11	DB4
12	DB5
13	DB6
14	DB7
15	DB8
16	DB9
17	DB10
18	DB11
19	DB12
20	DB13
21	DB14
22	DB15
23	VCC
24	GN0
25	VCC
26	RST
27	TE
28	TE
29	V1
30	K2
31	V2
32	DISP

Table 2: Revision History

VER.	REVISED DESCRIPTION	DATE	VERSION NO.	03
03	Correct P/N of connector	2016.11.15		
02	Correct module dimensions for LCD AA to TFT O.D.	2016.09.12		
01	First issue	2012.02.18		

Table 3: Manufacturing Information

MULTI-INNO TECHNOLOGY CO., LTD. DRAWN BY: RITA CHECKED BY: APPROVED BY: VERSION NO: 03	2016.11.15 2016.09.12 2012.02.18	RITA 03	SCALE: 1/1 UNIT: mm DESCRIPTION: TFT MODULE	MODULE P/N: 4.3INCH 480xRGBx272
---	--	--------------------	---	------------------------------------

NOTES:

1. DISPLAY TYPE: TFT/TRANSMISSIVE/NORMALLY WHITE.
2. VIEWING DIRECTION: 12 O'CLOCK.
3. OPERATING VOLTAGE: VCC=3.3V(TYP).
4. LCD CONTROLLER:SSD1963.
5. INTERFACE:8-/16-BIT 8080 MPU.
6. OPERATING TEMP.: -20°C ~ 70°C.
7. STORAGE TEMP.: -30°C ~ 80°C.
8. BACKLIGHT: WHITE LED.LED DRIVER IS BUILT-IN THIS MODULE.
9. SURFACE LUMINANCE: 480CD/M²(TYP).
10. SURFACE TREATMENT: ANTI-GLARE
11. GENERAL TOLERANCE: ±0.3mm.
12. RoHS COMPLIANT.

Table 4: Pin List

Pin No.	Symbol
1	GN0
2	VCC
3	BL+V
4	RS
5	WR
6	RST
7	DB0
8	DB1
9	DB2
10	DB3
11	DB4
12	DB5
13	DB6
14	DB7
15	DB8
16	DB9
17	DB10
18	DB11
19	DB12
20	DB13
21	DB14
22	DB15
23	VCC
24	GN0
25	VCC
26	RST
27	TE
28	TE
29	V1
30	K2
31	V2
32	DISP

Table 5: Revision History

VER.	REVISED DESCRIPTION	REVISOR	DATE	VERSION NO.	06
06	CORRECT PCB BOARD ASSEMBLY POSITION AND TOLERANCE.	CAROL	2021.05.11		
05	MODIFY THE ID DEFINITION	JACK	2018.04.20		
04	CORRECT THE P/N OF CONNECTOR	RITA	2016.03.09		
03	CORRECT THE MARKED DIMENSIONS	JACK	2015.02.02		
02	CHANGE B/L	JACK	2013.12.05		
01	FIRST ISSUE	JACK	2013.05.07		

Table 6: Manufacturing Information

MULTI-INNO TECHNOLOGY CO., LTD. DRAWN BY: JACK CHECKED BY: APPROVED BY: VERSION NO: 06	2013.05.07 06	JACK 06	SCALE: 1/1 UNIT: mm DESCRIPTION: TFT + RTP MODULE	MODULE P/N: 5INCH 800xRGBx480
---	--------------------------	--------------------	---	----------------------------------

HDMI FAMILY PRODUCTS – NEW STANDARD MODULES



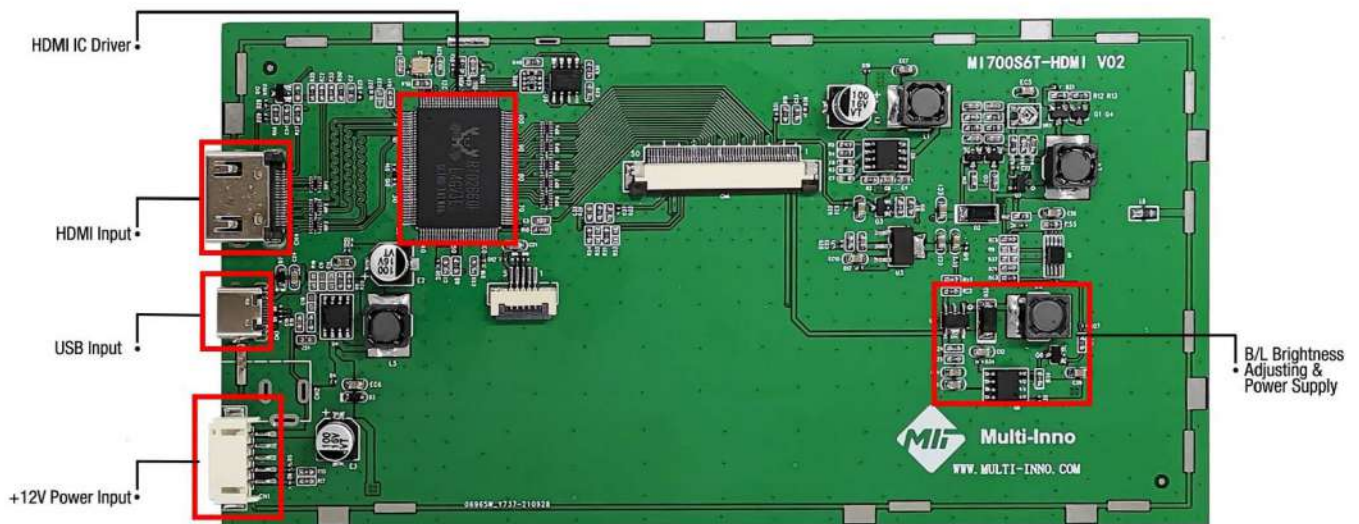
FEATURES

Industrial displays for indoor-application	Sunlight readable high-end displays
Brightness: 600cd/m ² (max.)	Brightness: 1000cd/m ² (max.)
Available display-sizes: 5.0"/ 6.86"/ 7.0"/ 8.0"/ 9.0"/ 10.1"/ 10.4"	
Each size in three variants available: without touch / resistive touch panel / projective-capacitive touch panel (PCAP)	
Standard HDMI input	
USB-HID driver recognition with both Capacitive and Resistive touch options	
Compatible with Windows/Linux as well as SBCs such as RaspberryPi and BeagleBone	
With/without four D:3.5mm mounting holes built into the module – enabling standard D:3 or 6-32 screws	
5V or 12V single power supply with TYPE-C USB or DC-005 connector	
Customized converting board solution is HDMI to LVDS/ RGB/ MIPI feasible	

HDMI FAMILY PRODUCTS – NEW STANDARD MODULES

HDMI BOARD INTRODUCTION TO FIGURE

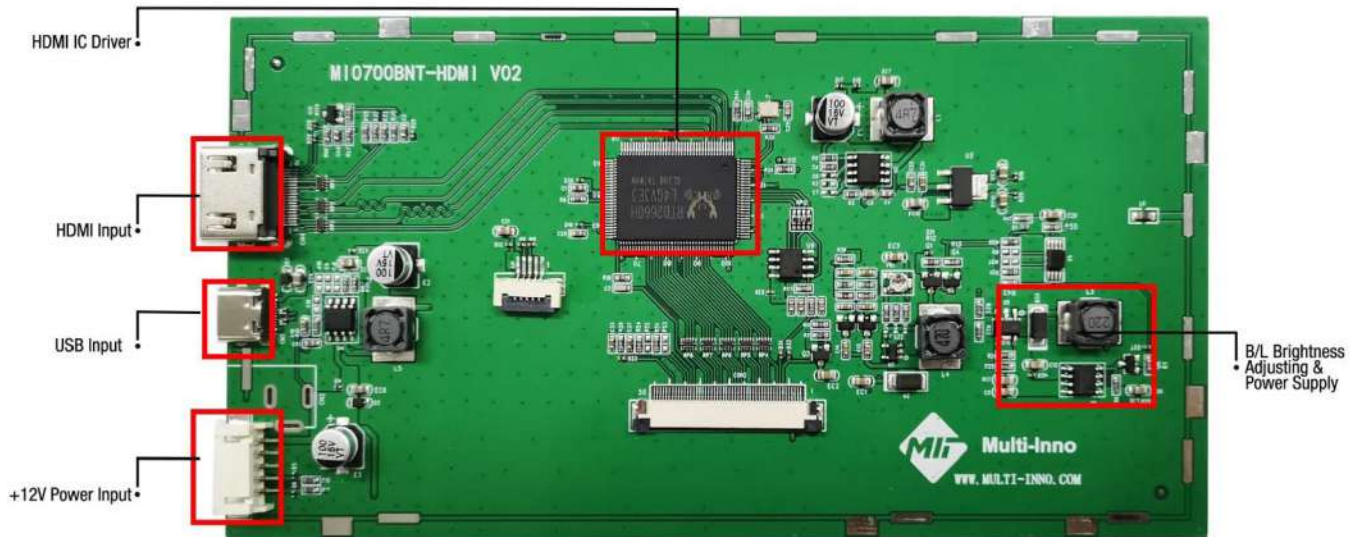
● Group 1



P/N	Size Inch	Resolution	A.A. (mm)	Outline Size (mm)	Contrast (Cr)	Brightness (nits)	Top. (°C)	Controller	Interface	TP (Selectable)	Viewing Direction
MI0700S6T-1-HB	7.00	800xRGBx480	154.08x85.92	164.90x99.80x9.10	500	420	-20-70	RTD2660H	HDMI 1.2	No	12:00
MI0700S6T-1CP2-HB	7.00	800xRGBx480	154.08x85.92	164.90x99.80x11.10	500	340	-20-70	RTD2660H	HDMI 1.2 USB	CTP	12:00
MI0700S6T-6-HB	7.00	800xRGBx480	154.08x85.92	181.60x100.60x9.70	500	420	-20-70	RTD2660H	HDMI 1.2	No	12:00
MI0700S6T-6CP-HB	7.00	800xRGBx480	154.08x85.92	181.60x100.60x11.70	500	340	-20-70	RTD2660H	HDMI 1.2 USB	CTP	12:00
MI0700S6T-12-HB	7.00	800xRGBx480	154.08x85.92	164.90x99.80x9.10	500	1000	-20-70	RTD2660H	HDMI 1.2	No	12:00
MI0700S6T-12CP-HB	7.00	800xRGBx480	154.08x85.92	164.90x99.80x11.10	500	850	-20-70	RTD2660H	HDMI 1.2 USB	CTP	12:00
MI0800FT-8-HB	8.00	800xRGBx600	162.00x121.50	183.00x141.00x9.20	500	250	-20-70	RTD2660H	HDMI 1.2	No	12:00
MI0900E3T-1-HB	9.00	800xRGBx480	198.00x111.70	210.70x126.50x8.60	500	500	-20-70	RTD2660H	HDMI 1.2	No	12:00

HDMI FAMILY PRODUCTS – NEW STANDARD MODULES

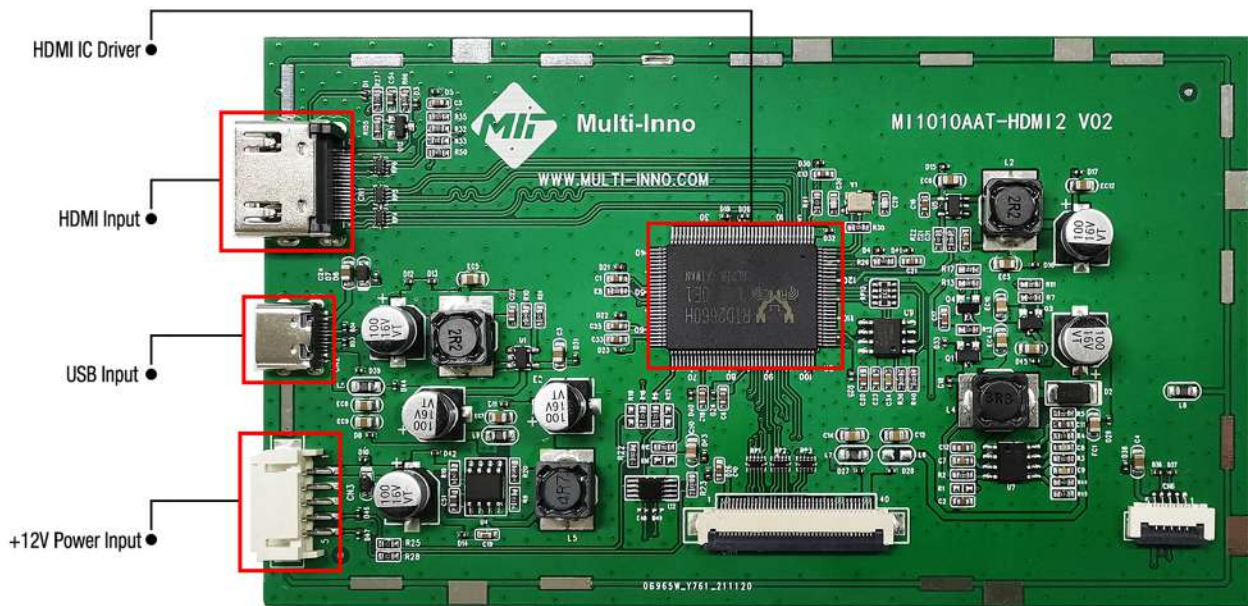
● Group 2



P/N	Size Inch	Resolution	A.A. (mm)	Outline Size (mm)	Contrast (Cr)	Brightness (nits)	Top. (°C)	Controller	Interface	TP (Selectable)	Viewing Direction
MI0700BNT-1-HB	7.00	1024xRGBx600	154.21x85.92	164.90x100.00x7.10	800	400	-20-70	RTD2660H	HDMI 1.2	No	Free
MI0700BNT-1CP-HB	7.00	1024xRGBx600	154.21x85.92	164.90x100.00x9.70	800	340	-20-70	RTD2660H	HDMI 1.2 USB	CTP	Free
MI0800JT-5-HB	8.00	800xRGBx480	176.64x99.36	192.80x116.90x21.00	500	1000	-20-70	RTD2660H	HDMI 1.2	No	12:00

HDMI FAMILY PRODUCTS – NEW STANDARD MODULES

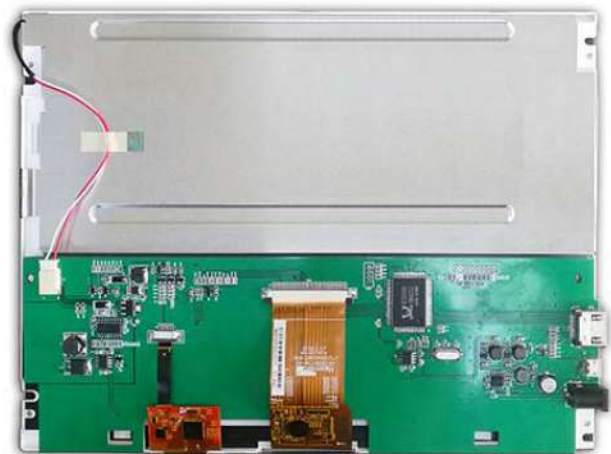
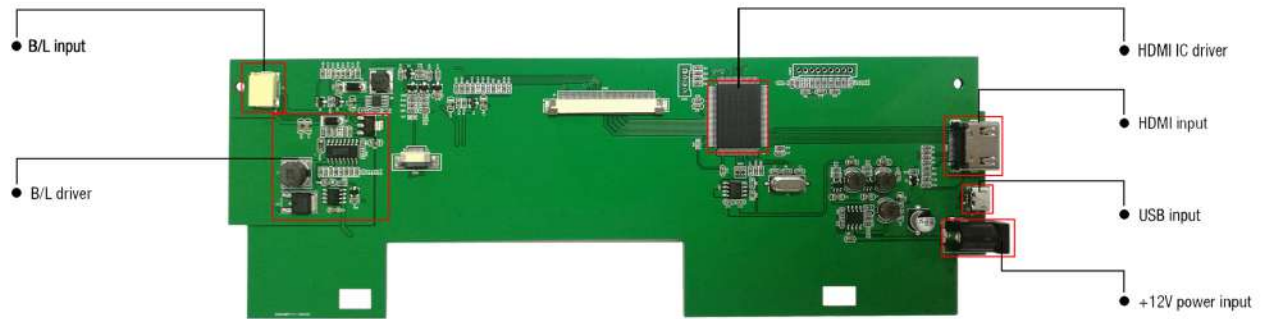
● Group 3



P/N	Size Inch	Resolution	A.A. (mm)	Outline Size (mm)	Contrast (Cr)	Brightness (nits)	Top. (°C)	Controller	Interface	TP (Selectable)	Viewing Direction
M11010AAT-4-HB	10.10	1280xRGBx800	216.96x135.60	229.70x149.15x11.60	900	1000	-20-70	RTD2660H	HDMI 1.2	No	Free
M11010AAT-4CP1-HB	10.10	1280xRGBx800	216.96x135.60	240.00x165.00x15.05	900	850	-20-70	RTD2660H	HDMI 1.2 USB	CTP	Free
M11010AAT-6-HB	10.10	1280xRGBx800	216.96x135.60	229.70x149.15x11.60	900	600	-20-70	RTD2660H	HDMI 1.2	No	Free
M11010AAT-6CP1-HB	10.10	1280xRGBx800	216.96x135.60	240.00x165.00x15.05	900	510	-20-70	RTD2660H	HDMI 1.2 USB	CTP	Free

HDMI FAMILY PRODUCTS – NEW STANDARD MODULES

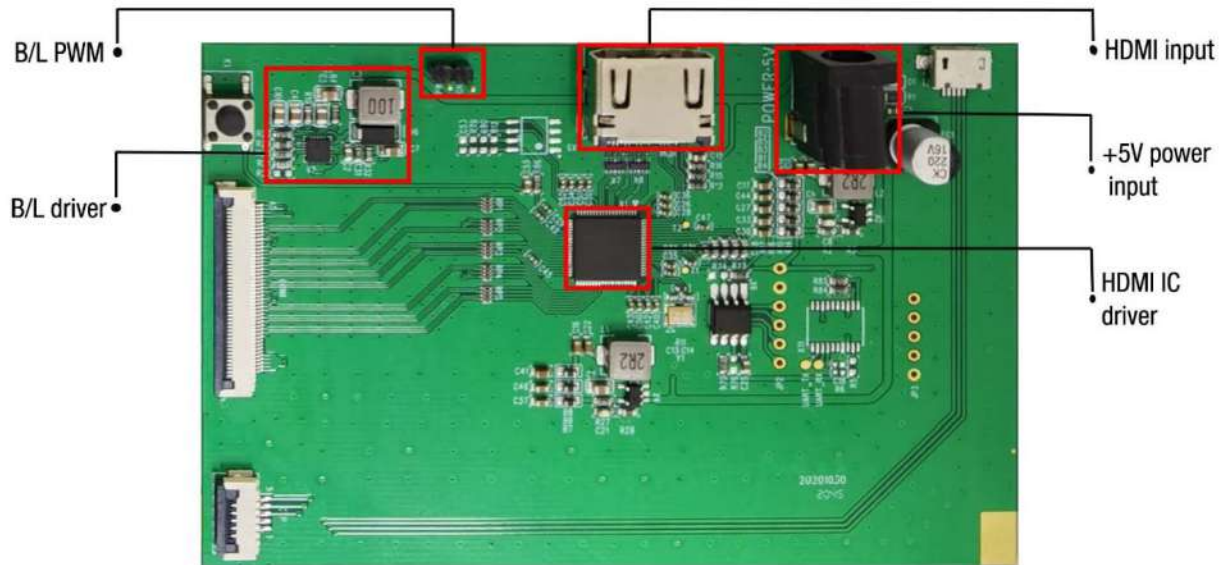
● Group 4



P/N	Size Inch	Resolution	A.A. (mm)	Outline Size (mm)	Contrast (Cr)	Brightness (nits)	Top. (°C)	Controller	Interface	TP (Selectable)	Viewing Direction
MI1040YT-2-HB	10.40	1024xRGBx768	211.20x158.40	243.00x185.60x13.90	900	1000	-20-70	RTD2660	HDMI 1.2	No	Free
MI1040YT-2CP1-HB	10.40	1024xRGBx768	211.20x158.40	243.00x185.60x16.60	900	850	-20-70	RTD2660	HDMI 1.2 USB	CTP	Free
MI1040YT-3-HB	10.40	1024xRGBx768	211.20x158.40	243.00x185.60x13.90	900	500	-20-70	RTD2660	HDMI 1.2	No	Free
MI1040YT-3CP-HB	10.40	1024xRGBx768	211.20x158.40	243.00x185.60x16.60	900	400	-20-70	RTD2660	HDMI 1.2 USB	CTP	Free

HDMI FAMILY PRODUCTS – NEW STANDARD MODULES

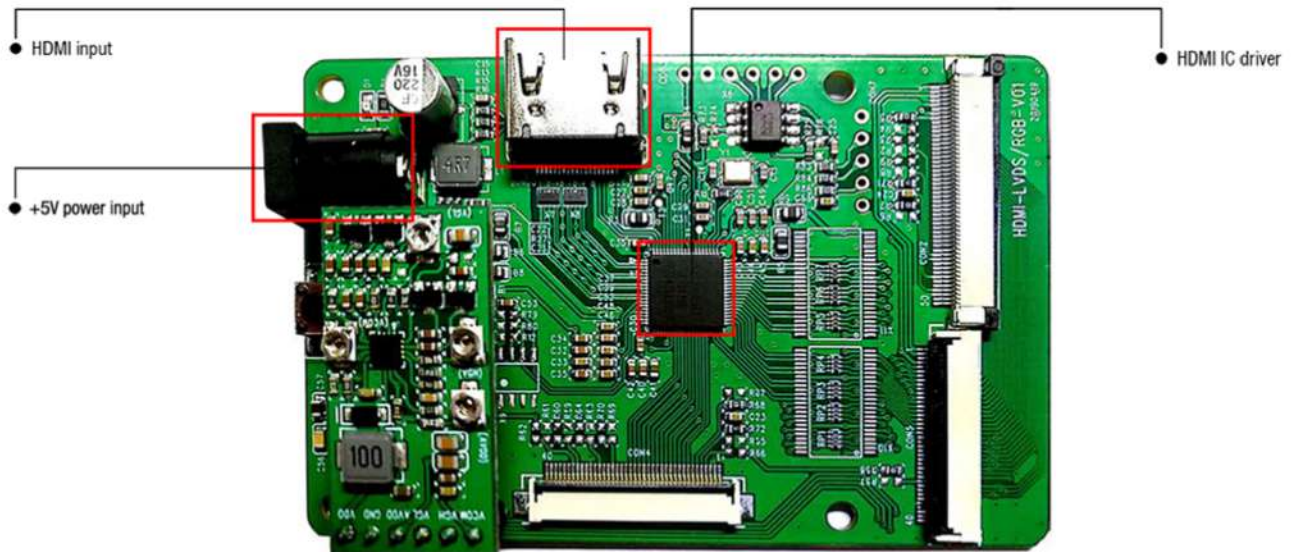
● Group 5



P/N	Size Inch	Resolution	A.A. (mm)	Outline Size (mm)	Contrast (Cr)	Brightness (nits)	Top. (°C)	Controller	Interface	TP (Selectable)	Viewing Direction
MI1010ART-1-HB	10.10	1920xRGBx1200	216.81x135.50	229.46x149.10x7.75	900	300	-20-70	LT8916B	HDMI 1.2	No	Free
MI1010ART-1CP-HB	10.10	1920xRGBx1200	216.81x135.50	240.00x165.00x11.20	900	250	-20-70	LT8916B	HDMI 1.2	CTP	Free

HDMI FAMILY PRODUCTS – NEW STANDARD MODULES

● Group 6



P/N	Size Inch	Resolution	A.A. (mm)	Outline Size (mm)	Contrast (Cr)	Brightness (nits)	Top. (°C)	Controller	Interface	TP (Selectable)	Viewing Direction
MI0500PT-7-HB	5.00	800xRGBx480	108.00x64.80	120.70x75.80x6.60	500	600	-20-70	LT8619	HDMI 1.4	No	12:00
MI0700XT-19-HB	7.00	1024xRGBx600	153.60x90.00	165.75x105.39x6.80	700	500	-20-70	LT8619	HDMI 1.4	No	12:00
MI0700XT-23-HB	7.00	1024xRGBx600	153.60x90.00	165.75x105.39x8.60	700	1000	-20-70	LT8619	HDMI 1.4	No	12:00
MI0800RT-3-HB	8.00	1024xRGBx600	176.64x99.36	192.80x116.90x10.00	700	500	-20-70	LT8619	HDMI 1.4	No	12:00

全 創 科 技 有 限 公 司
MULTI-INNO TECHNOLOGY CO., LTD

Shenzhen Office

Address: Room 22G-22H, Seaview Plaza, No 18, Taizi Road, Shekou,
Nanshan District, ShenZhen, China PC:518067

Factory

Address: Xingnan Industrial Zone, Lianping Administrative
District, Dalingshan Town, Dongguan, China

TEL: 86-755-2643 9937
FAX: 86-755-8606 5036
E-MAIL: sales@multi-inno.com
WEB: www.multi-inno.com

