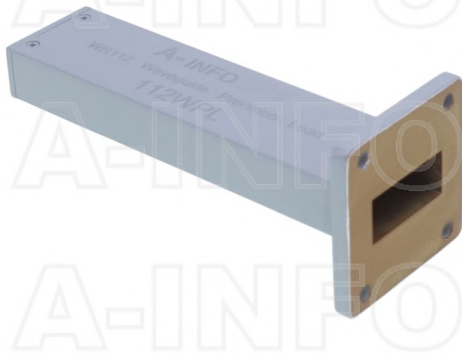


112WLPL WR112 Waveguide Low Power Load 7.05-10GHz with Rectangular Waveguide Interface



WR112 Waveguide Low Power Load Operating From 7.05 to 10GHz with Rectangular Waveguide Interface

Product Information

SKU	112WLPL
-----	---------

Description

Waveguide low power load 112WLPL, operating from 7.05 to 10GHz and low VSWR 1.03:1 112WLPL covers the WR112 sub waveguide band and comes with one flange FBP84(UBR84). It can handle 4W continuously and 4KW peak power. The WLPL series are for general version, low VSWR terminations for system application. The typical applications include system or test bench set-ups and small moderate power dummy loads.

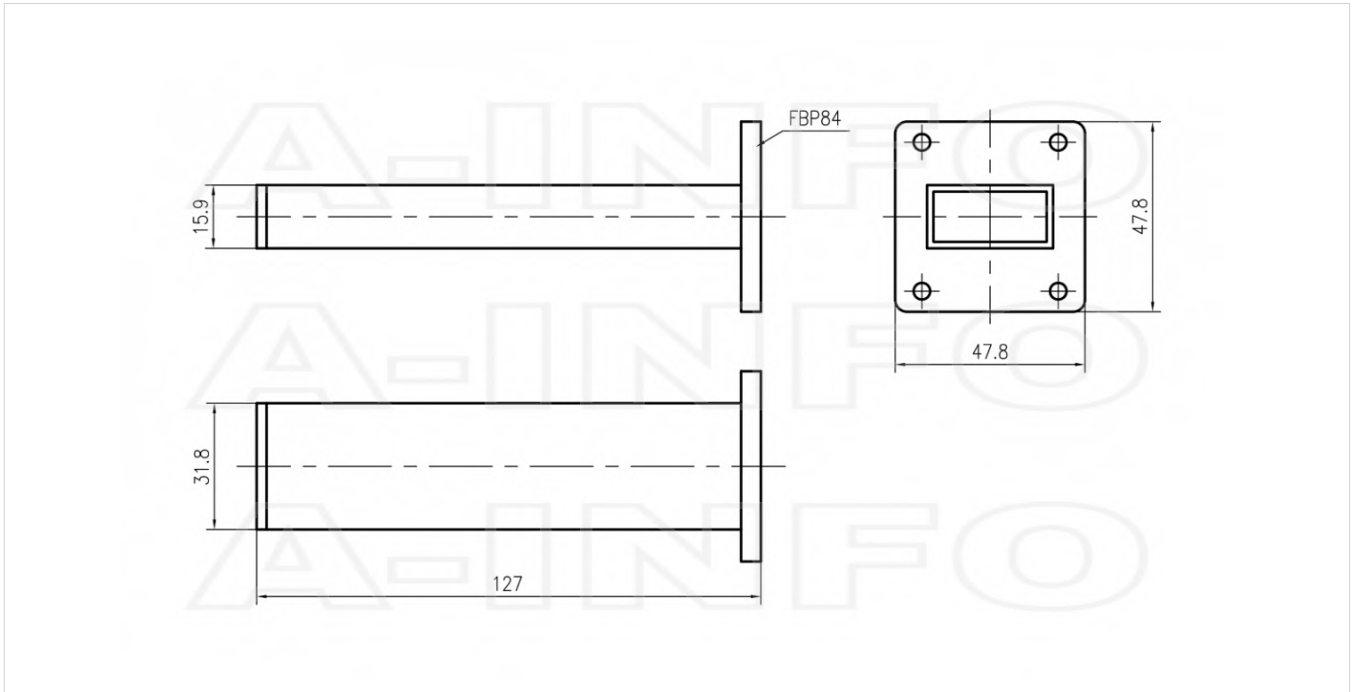
Technical Specification

Electrical Specification		Mechanical Specification	
WG Load Type	Low Power	Body Material	Al
Waveguide Band	C X	Size, L (mm)	127
Waveguide Type	Rectangular	Size, W (mm)	47.8
Waveguide Size EIA WR	WR112	Size, H (mm)	47.8
Frequency, Min (GHz)	7.05	Weight, (kg)	0.15
Frequency, Max (GHz)	10	Pressure Sealed	No
VSWR, Typ	1.025:1	Environmental Specification	
VSWR, Max	1.03:1	Operating Temp. Low (°C)	-55
Power Handling, CW, (W)	4	Operating Temp. High (°C)	85
Power Handling, Peak, (KW)	4	Storage Temp. Low (°C)	-60
		Storage Temp. High (°C)	90
Interface			
Flange Style	Square		
Flange Type	Cover		
Flange Designation	FBP84(UBR84)		

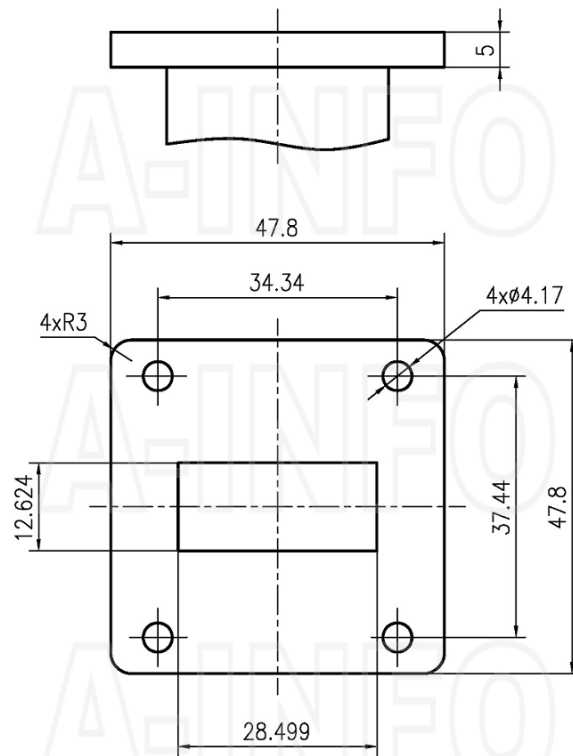
Additional Information

Application	General Purpose Indoor & Outdoor, Fixed
-------------	---

Outline Drawing



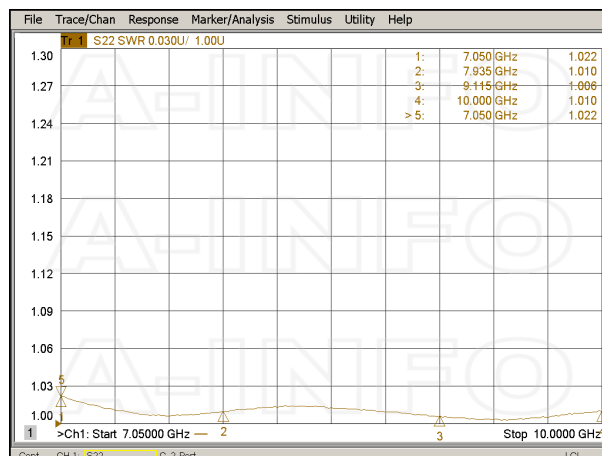
Flange Drawing



FBP84

Typical Test Results

VSWR



About this Datasheet

<ul style="list-style-type: none">● Product Information <p>Product Link: https://www.ainfoinc.com/112wpl-wr112-waveguide-low-power-load-7-05-10-ghz-fbp84-ubr84-6072 Data subject to change without notice. © A-INFO INC. 2024. All Rights Reserved</p>	<ul style="list-style-type: none">● Contact Us <p>Address: 60 Tesla, Irvine, CA 92618, USA</p> <p>Website: www.ainfoinc.com</p> <p>Email: sales@ainfoinc.com</p>	<ul style="list-style-type: none">● Phone & Fax <p>Phone: +1-949-639-9688 +1-949-639-9608</p> <p>Fax: +1-949-639-9670</p>
--	---	--