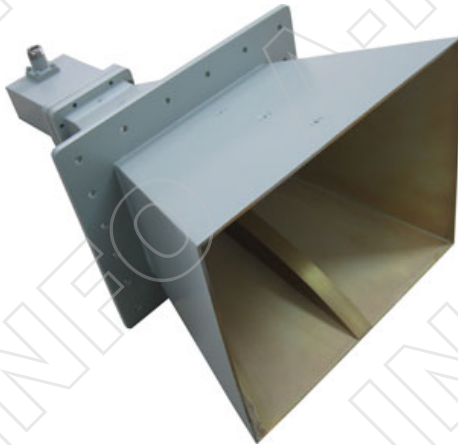
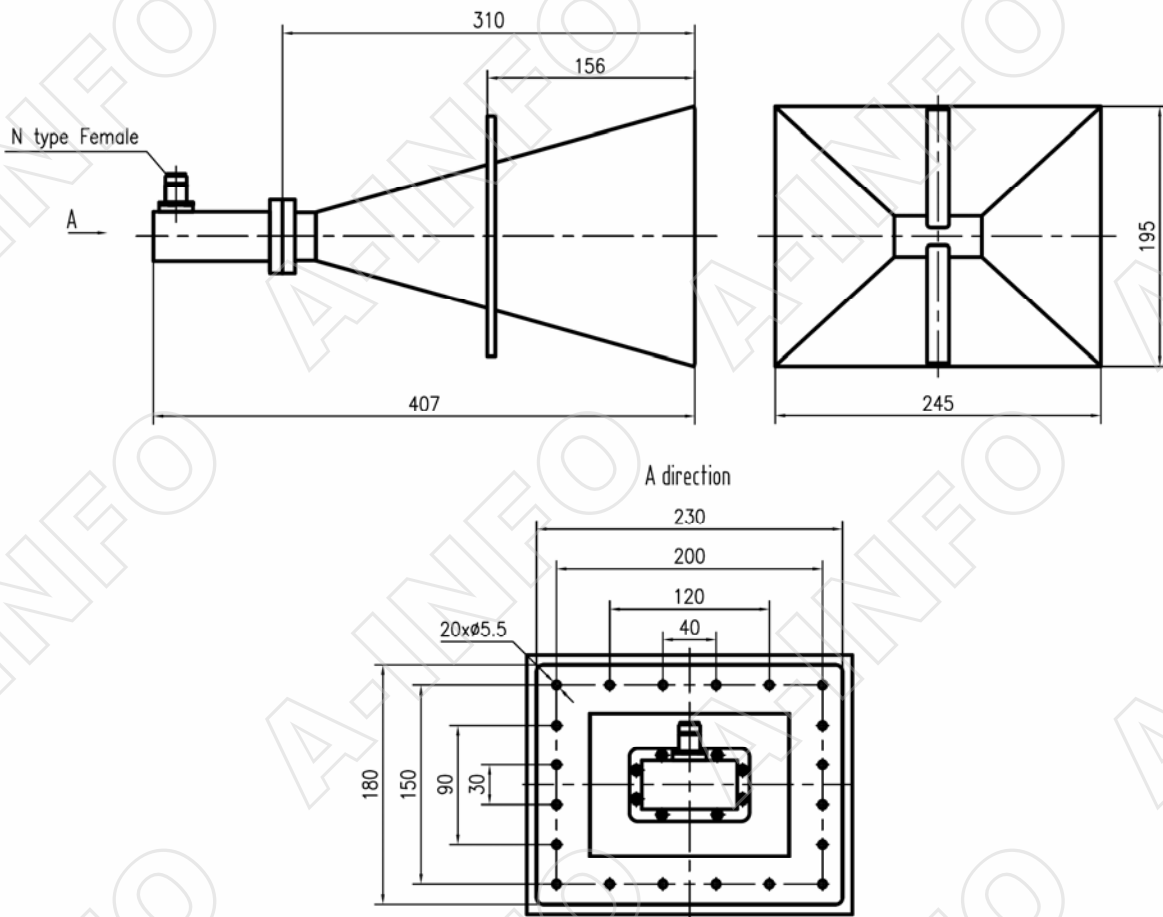


Technical Specification



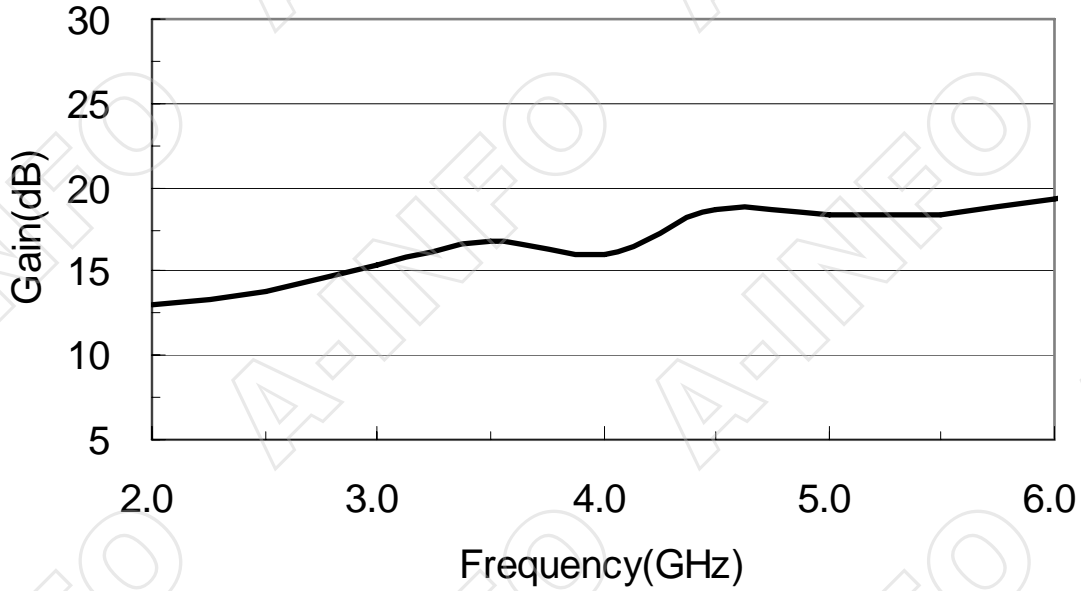
Frequency Range(GHz)	2.0 - 6.0
Gain(dB)	15 Typ.
Polarization	Linear
Cross Pol. Isolation(dB)	20 Min. 25 Typ.
VSWR	2.0 Max. 1.3 Typ.
3dB Beamwidth(deg)	H Plane: 17 - 40
	E Plane: 20 - 37
Connector	N-Female
Power Handling(W)	300 Max. CW
Size(mm)	245x195x407
Net Weight(Kg)	2.6 Around

Outline Drawing (Size: mm)

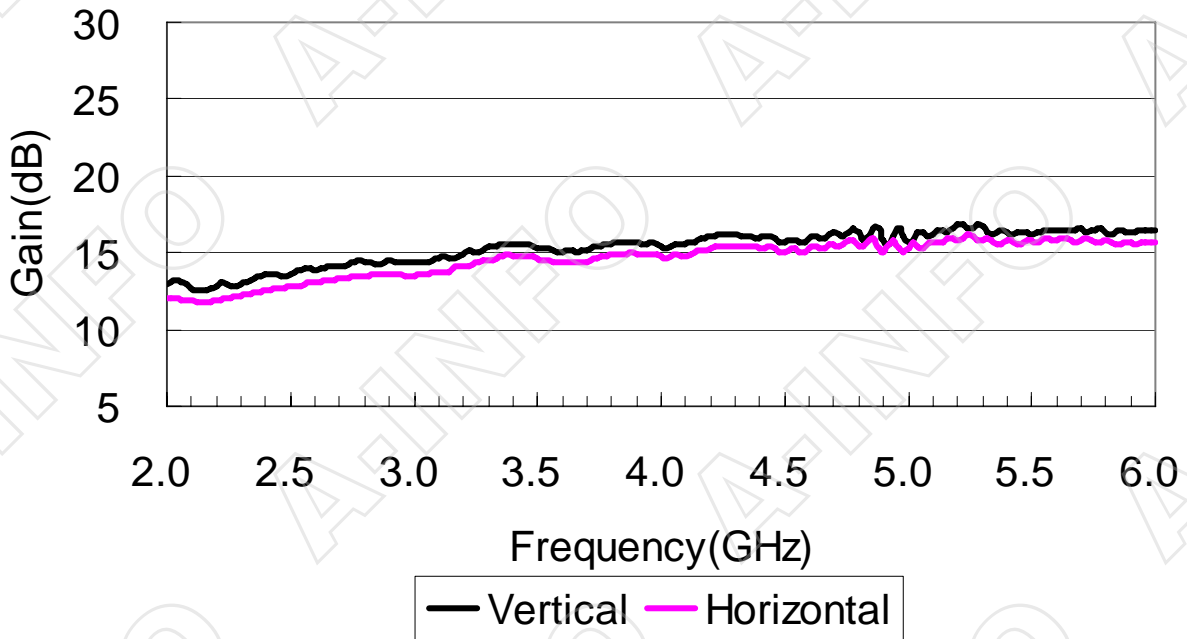


Test Results

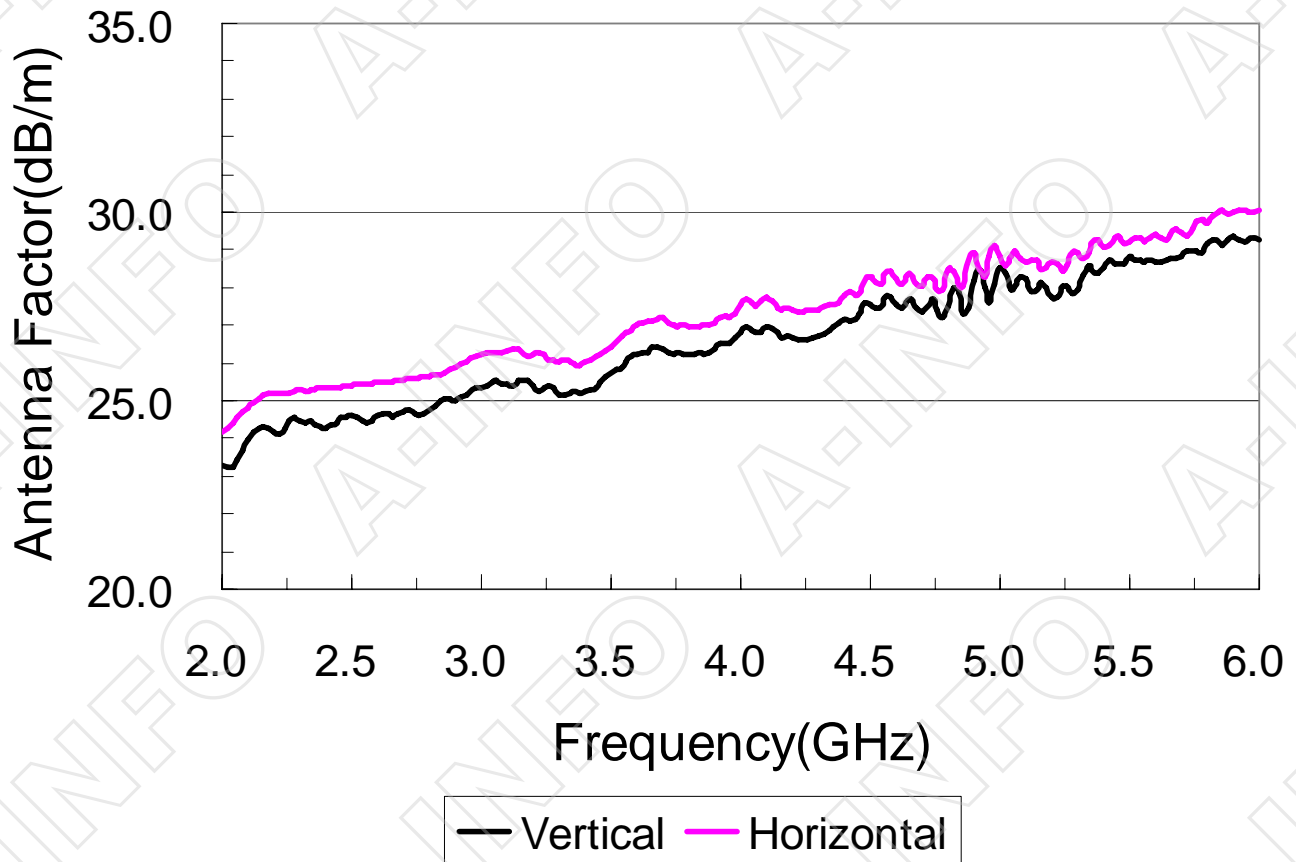
1. Gain



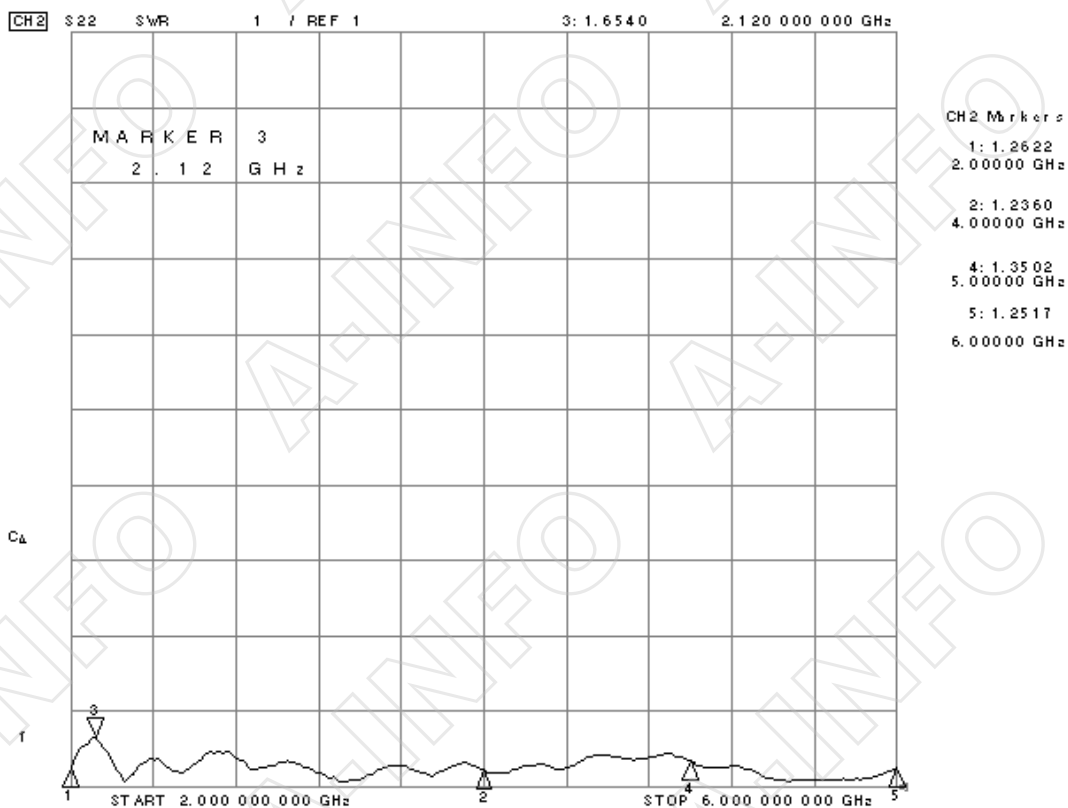
2. Gain @ 1m distance



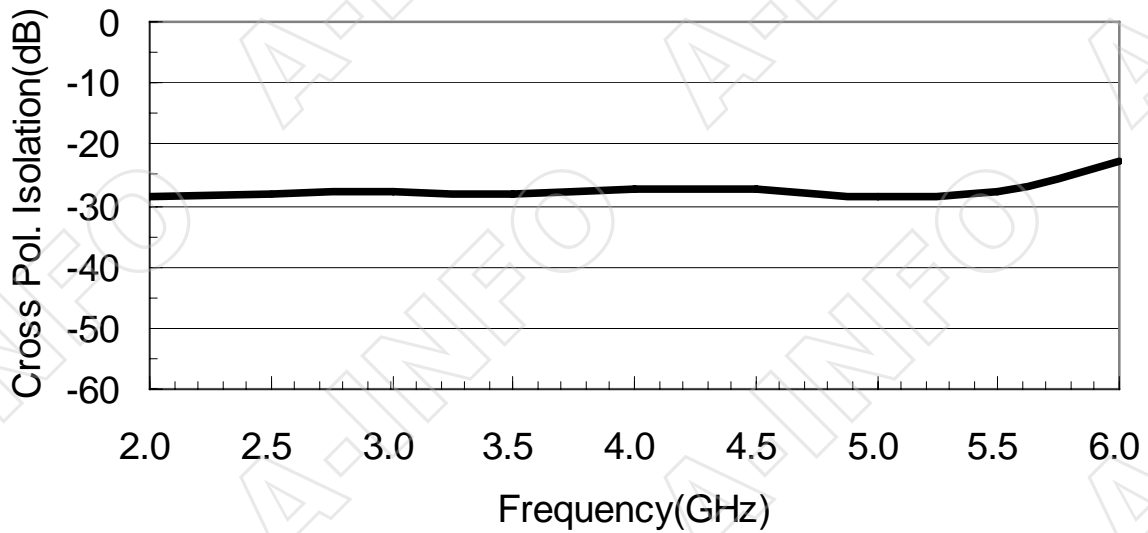
3. Antenna Factor @ 1m distance



4. VSWR



5. Cross Polarization Isolation



6. Pattern

