



137WET WR137 Waveguide E-Plane Tee 5.85-8.2GHz with Three Rectangular Waveguide Interfaces

WR137 Waveguide E-Plane Tee Operating From 5.85 to 8.2GHz with Three Rectangular Waveguide Interfaces

Product Information

| | |
|-----|--------|
| SKU | 137WET |
|-----|--------|

Description

Waveguide E-plane tee 137WET, operating from 5.85 to 8.2GHz with a 0.2dB insertion loss and low VSWR 1.50:1. 137WET is a three-ports waveguide connector. All the ports have standard WR137 waveguides with the same flanges FDP70(UDR70). The waveguide E-plane tees are used to separate the signal at E plane rectangular port into the collinear arm with the two rectangular waveguide ports or synthesize the signal from the two ports of the collinear arm into the E plane port.

Technical Specification

| | | | |
|---------------------------------|--------------|------------------------------------|--------------|
| Electrical Specification | | Interface | |
| WG Tee Type | E-Plane Tee | Flange 3 Style | Rectangular |
| Waveguide Band | C X | Flange 3 Type | Cover |
| Waveguide Type | Rectangular | Flange 3 Designation | FDP70(UDR70) |
| Waveguide Size EIA WR | WR137 | Mechanical Specification | |
| Frequency, Min (GHz) | 5.85 | Body Material | Al |
| Frequency, Max (GHz) | 8.2 | Pressure Sealed | No |
| I.L., Typ (dB) | 0.2 | Environmental Specification | |
| I.L., Max (dB) | 0.3 | Operating Temp. Low (°C) | -55 |
| VSWR, Typ | 1.50:1 | Operating Temp. High (°C) | 85 |
| Power Handling, CW, (W) | 1000 | Storage Temp. Low (°C) | -60 |
| Power Handling, Peak, (KW) | 550 | Storage Temp. High (°C) | 90 |
| Interface | | | |
| Flange 1 Style | Rectangular | | |
| Flange 1 Type | Cover | | |
| Flange 1 Designation | FDP70(UDR70) | | |
| Flange 2 Style | Rectangular | | |
| Flange 2 Type | Cover | | |
| Flange 2 Designation | FDP70(UDR70) | | |

Additional Information

| | |
|-------------|---|
| Application | General Purpose Indoor & Outdoor, Fixed |
|-------------|---|

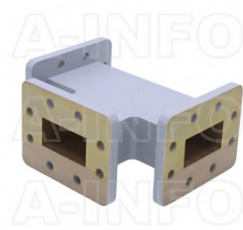
Similar Products



159WET WR159 Waveguide E-Plane Tee 4.9-7.05GHz with Three Rectangular Waveguide Interfaces



112WET WR112 Waveguide E-Plane Tee 7.05-10GHz with Three Rectangular Waveguide Interfaces



159WHT WR159 Waveguide H-Plane Tee 4.9-7.05GHz with Three Rectangular Waveguide Interfaces



137WHT WR137 Waveguide H-Plane Tee 5.85-8.2GHz with Three Rectangular Waveguide Interfaces



112WHT WR112 Waveguide H-Plane Tee 7.05-10GHz with Three Rectangular Waveguide Interfaces



159WMT WR159 Waveguide Magic Tee 4.9-7.05GHz with Four Rectangular Waveguide Interfaces



137WMT WR137 Waveguide Magic Tee 5.85-8.2GHz with Four Rectangular Waveguide Interfaces



112WMT WR112 Waveguide Magic Tee 7.05-10GHz with Four Rectangular Waveguide Interfaces

About this Datasheet

| | | |
|---|--|--|
| <ul style="list-style-type: none"> • Product Information Product Link: https://www.ainfoinc.com/137wet-wr137-waveguide-e-plane-tee-5-85-8-2-ghz-fdp70-udr70 Data subject to change without notice. © A-INFO INC. 2024. All Rights Reserved | <ul style="list-style-type: none"> • Contact Us Address: 60 Tesla, Irvine, CA 92618, USA Website: www.ainfoinc.com Email: sales@ainfoinc.com | <ul style="list-style-type: none"> • Phone & Fax Phone: +1-949-639-9688 +1-949-639-9608 Fax: +1-949-639-9670 |
|---|--|--|